

DESCRIPTION

CAPITAL 100 US accentuates the designer’s palette with an ultra-narrow 3.2° beam using 20 high-power LEDs fitted with precision optics. Grazing of vertical columnar features or illumination of objects at distance both benefit from the high-performance of this luminaire.



Date: _____ Type: _____ Catalog Number: _____

Project Name: _____

ORDERING INFORMATION

| LUMINAIRE | | | | | | | |
|--|-------------------------------|--------------------|--|-------------------|-----------------------|--------------------------|------------------------------|
| MODEL | CCT | CONTROL | CABLE | VOLTAGE | OPTIC | FINISH | OPTION |
| CP100US Capital 100 US | RGBW30K RGBW (3000K White) | DMX-RDM DMX/RDM | S Power in (7.9 in.), DMX in, DMX out (59 in.) | UNV 120 & 277V | US Ultra Spot 3.2° | AG Anthracite Grey | AST Anti-Saline Treatment |
| CP100USPE Capital 100 US Polar Edition | RGBW40K RGBW (4000K White) | | M Monocable Without Connec- tors (19.7 in.) | | | BL Black | 3G 3G Mounting Yoke |
| | | | C Monocable With Connectors (19.7 in.) | | | SG Griven Silver Grey | |
| | | | | | | WH White | |
| | | | | | | CC Custom RAL Color | |

Custom options are available; consult factory via phone at (864) 487-3535 ext. 258 or via email at DesignServices@EXP-Brands.com.

See Page 5 for ordering information of available accessories.



| CAPITAL 100 US | | |
|----------------|-----------------------|--------------------------------|
| PHYSICAL | HOUSING | Die-Cast Aluminum |
| | OVERALL DIMENSIONS | 11.1" L x 3.2" W x 11.1" H |
| | WEIGHT | 11.2 Pounds |
| | OPERATING TEMPERATURE | -40°F to 122°F (-40°C to 50°C) |
| | DRIVER LOCATION | Integral |

| | | | | |
|------------|--------------|--|---|--|
| ELECTRICAL | POWER | 53 Watts | | |
| | POWER SUPPLY | 120 and 277VAC; 50-60Hz | | |
| | CURRENT | 0.44 amps at 120 volts 0.19 amps at 277 volts | | |
| | CONTROL | DMX-RDM | | |
| | CABLE | S Cable | M Cable | C Cable |
| | | Power In, DMX In, DMX Out Cables | 6-Polarity In and Out Power/Data Monocable Without Connectors | 6-Polarity In and Out Power/Data Monocable With Connectors |
| | CABLE LENGTH | 59" | 19.7" | 19.7" |

| | | | | |
|-------------|---------------------------|------------------------------|--|--|
| PHOTOMETRIC | LED | RGBW (3000K or 4000K White) | | |
| | NUMBER OF LEDS | 20 High Power LEDs | | |
| | DELIVERED LUMEN OUTPUT | 2286 lumens | | |
| | EFFICACY | 43 lumens per watt | | |
| | LUMEN MAINTENANCE | L70 > 100,000 Hours at 77°F* | | |
| | LIGHT CONTROL ACCESSORIES | Snoot, Visor Available | | |

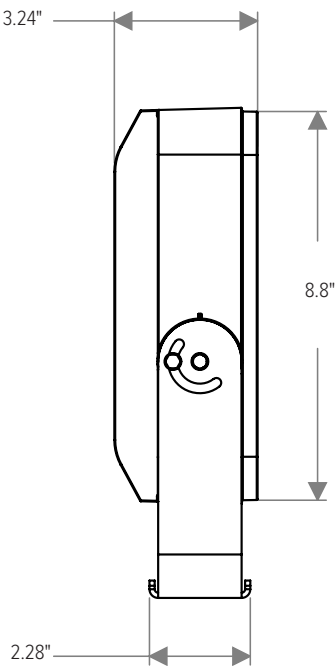
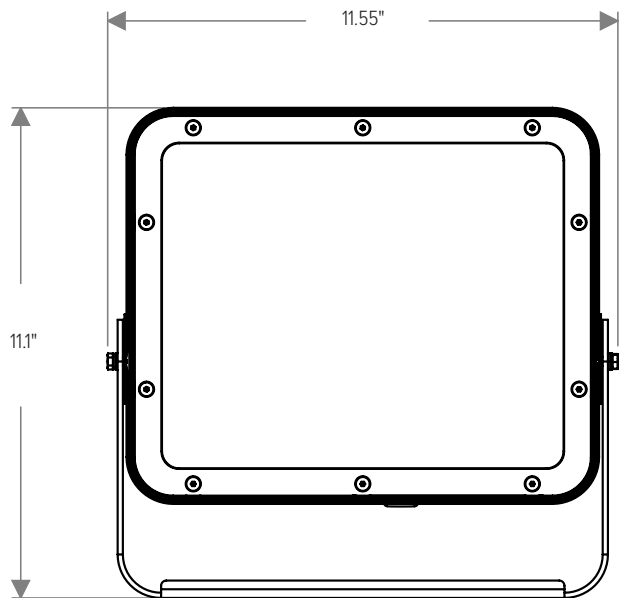
| LIGHT DISTRIBUTIONS | DISTRIBUTION | BEAM ANGLE | RGBW 3000K | | RGBW 4000K | |
|---------------------|--------------|------------|------------|----------|------------|----------|
| | | | LUMENS | EFFICACY | LUMENS | EFFICACY |
| | Ultra-Spot | 3.2° | 2217 | 42 | 2286 | 43 |

| | | | | | |
|----------------|--------------------|---------------------------------|--|--|--|
| CERTIFICATIONS | SAFETY | ETL Certified for Wet Locations | | | |
| | INGRESS PROTECTION | IP67 | | | |
| | IMPACT RATING | IK09 | | | |
| | WARRANTY | Limited Five Year Warranty | | | |

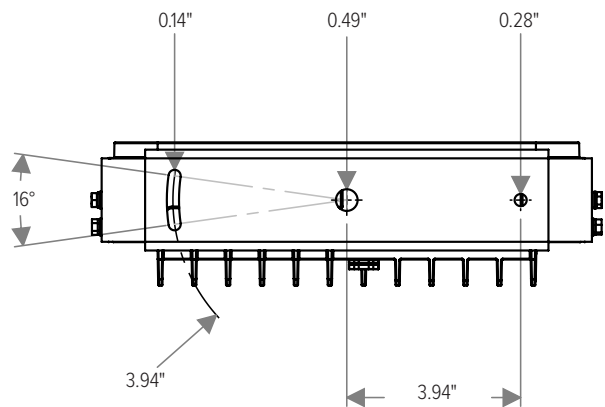
* LED life may vary under actual field conditions due to external factors. Lifetime estimates are generated from actual testing in a controlled environment. Values are conservatively derived from those numbers.

DIMENSIONS

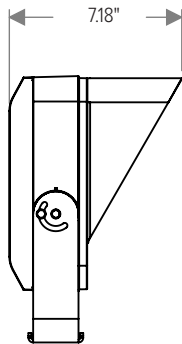
All dimensions are shown in inches unless otherwise noted.



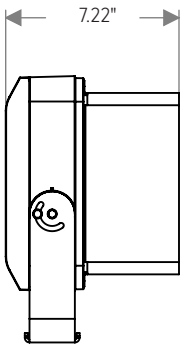
MOUNTING



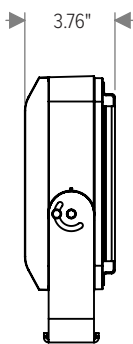
ACCESSORY DIMENSIONS



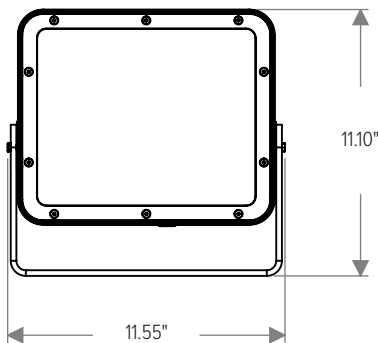
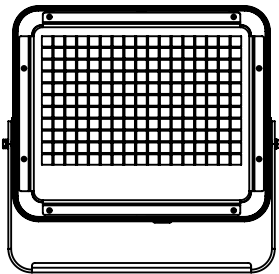
With Visor (CP100-VISOR-XX)



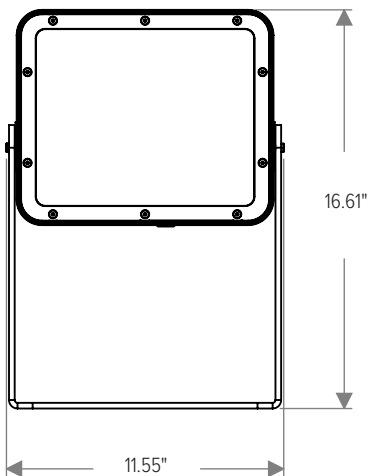
With Snoot (CP100-SNOOT-XX)



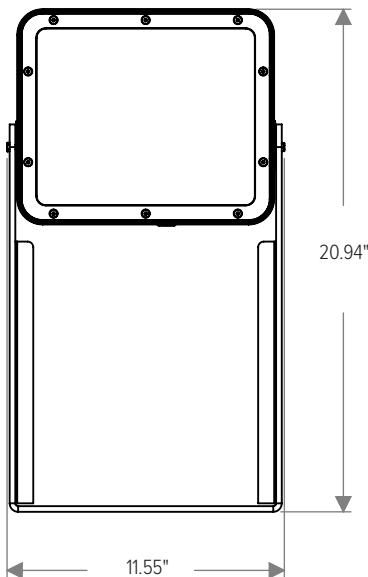
With Wire Guard (CP100-WIREGUARD-XX)



With 3G Mounting Yoke
(Ordered with Luminaire)



With 11.8" Extended Mounting Yoke
(CP100-EXTYOKE300-XX)



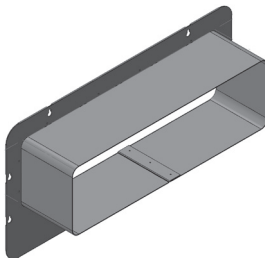
With 16.1" Extended Mounting Yoke
(CP100-EXTYOKE410-XX)

ACCESSORIES

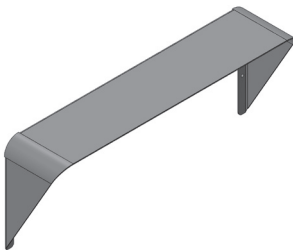
NOTE: Accessories are ordered and shipped separately from luminaire for field installation.
-XX* indicates a painted accessory. See bottom of page for painted accessory ordering information.



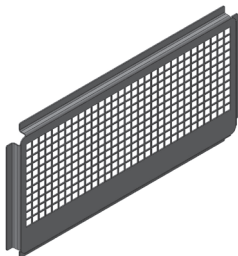
IR-CONFIG-REMOTE
Infrared Configuration Remote



CP100-SNOOT-XX*
Snoot



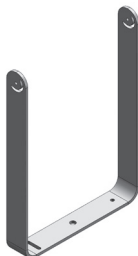
CP100-VISOR-XX*
Visor



CP100-WIREGUARD-XX*
Wire Guard



CP100-EXTYOKE300-XX*
11.8" (300mm) Extended Mounting
Yoke



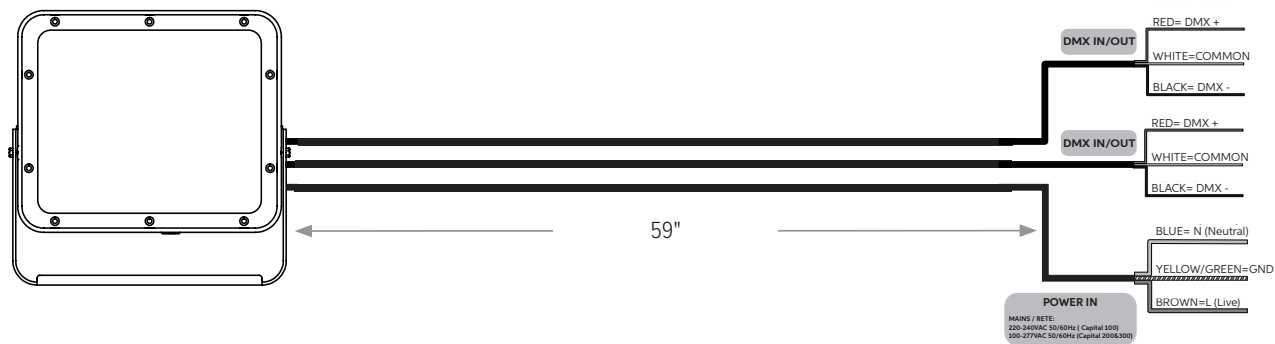
CP100-EXTYOKE410-XX*
16.1" (410mm) Extended Mounting
Yoke

ORDERING INFORMATION

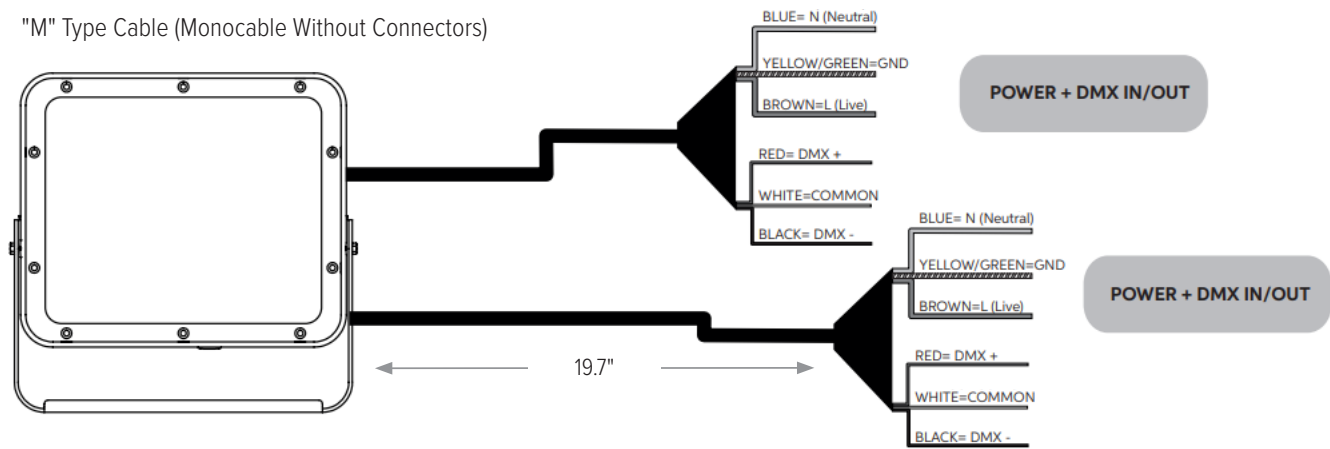
| PAINTED ACCESSORIES | | | | | |
|---------------------|--------------------------------------|---------------|--------------------|--------|-----------------------|
| MODEL | | FINISH (*-XX) | | OPTION | |
| CP100-EXTYOKE300 | 11.8" (300mm) Extended Mounting Yoke | AG | Anthracite Grey | AST | Anti-Saline Treatment |
| CP100-EXTYOKE410 | 16.1" (410mm) Extended Mounting Yoke | BL | Black | | |
| CP100-SNOOT | Snoot | SG | Griven Silver Grey | | |
| CP100-VISOR | Visor | WH | White | | |
| CP100-WIREGUARD | Wire Guard | CC | Custom RAL Color | | |

CONNECTIONS

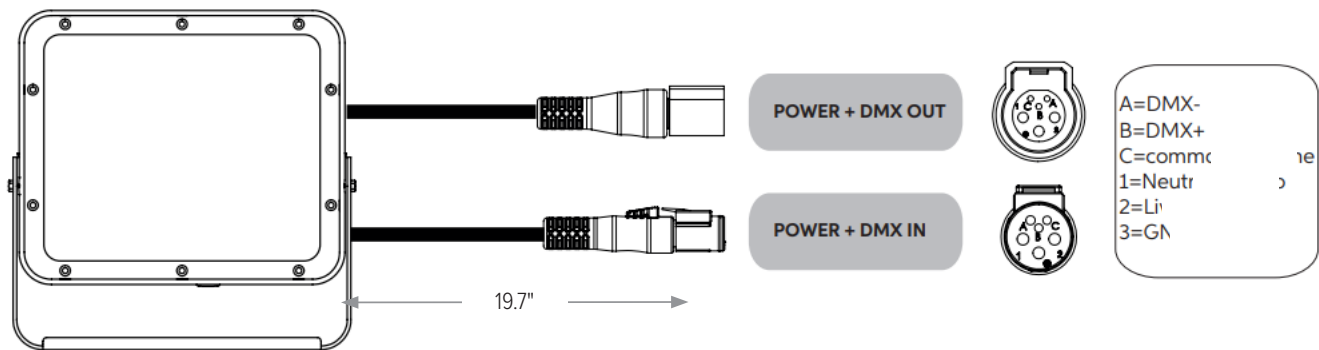
"S" Type Cable (Power In, DMX In, DMX Out)



"M" Type Cable (Monocable Without Connectors)

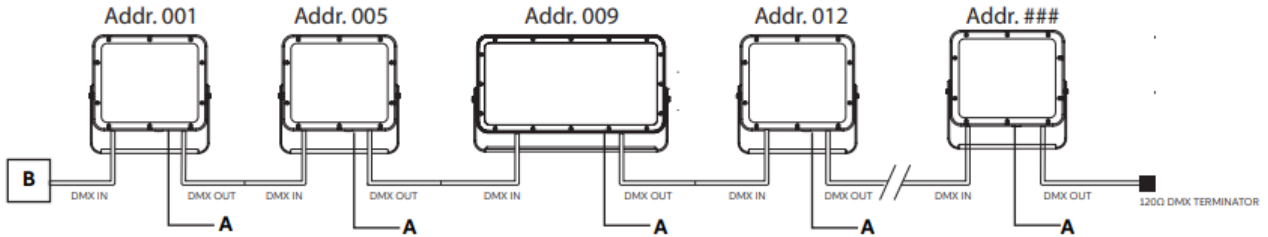


"C" Type Cable (Monocable With Connectors)



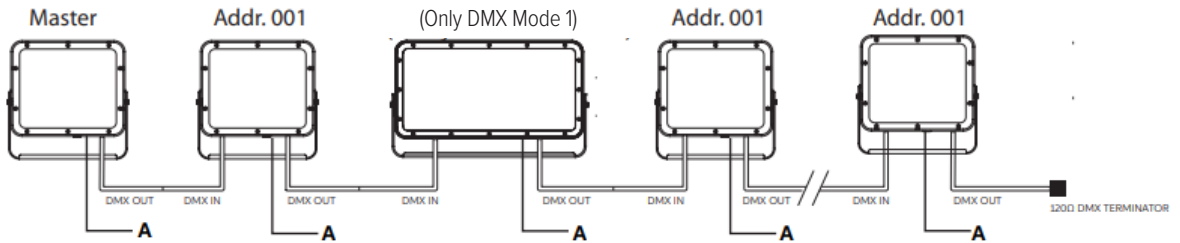
OPERATING MODES

DMX Mode



Example with fixtures set to 4 DMX channels
Esempio con apparecchi impostati su 4 canali DMX

Master-Satellite/Automatic/Fixed Color Mode



WARNING ! in this mode, no DMX control device must be present along the line.

CUSTOMIZE YOUR **EX**PERIENCE.

At Experience Brands, we believe every space deserves unique lighting elements. We proudly specialize in crafting solutions that reflect your personal vision. Our expert team is here to collaborate with you to design and implement customized features that elevate your environment.

Ready to Get Started? Email us at: DesignServices@exp-brands.com