

# CAPITAL 100 MC

Dynamic White



## DESCRIPTION

CAPITAL 100MC delivers superior color-mixing through quad-chip LEDs and precision lens technology within a strikingly compact body. Tailored to meet the needs of demanding architectural lighting specifications, this flexible and highly versatile floodlight is suitable for a variety of installations where a reduced mounting footprint is desired.



Date: \_\_\_\_\_ Type: \_\_\_\_\_ Catalog Number: \_\_\_\_\_

Project Name: \_\_\_\_\_

## ORDERING INFORMATION

LUMINAIRE							
MODEL	CCT	CONTROL	CABLE	VOLTAGE	OPTIC *	FINISH	OPTION
CP100MC Capital 100 MC	DW Dynamic White (3000K to 6500K)	DMX-RDM DMX/RDM	S Power in (7.9 in.), DMX in, DMX out (59 in.)	UNV 120 - 277V	SP Spot 7°	AG Anthracite Grey	MG Marine Grade
			M Monocable without connectors (19.7 in.)		NB Narrow 10°	BL Black	3G 3G Mounting Yoke
CP100MCPE Capital 100 MC Polar Edition			C Monocable with connectors (19.7 in.)		MB Medium 23°	SG Griven Silver Grey	
					WB Wide 35°	WH White	
						CC Custom RAL Color	

\* Consult factory for availability of other optical options.

CAPITAL 100 MC		
PHYSICAL	HOUSING	Die-cast Aluminum
	HOUSING DIMENSIONS	11⅞" W x 9" H x ø3¼"
	OVERALL DIMENSIONS	11⅞" W x 11⅞" H x ø3¼"
	WEIGHT	12 lbs
	EPA	0.79 ft²
	OPERATING TEMPERATURE	-40°C to 50°C (-40°F to 122°F)

ELECTRICAL	POWER CONSUMPTION	74 watts max
	AMPERAGE	0.6 A @ 120VAC 0.3 A @ 277VAC
	CONTROL	DMX-RDM. Includes onboard standalone sequencing or master-satellite operation without DMX control systems when programmed with infra-red configuration remote (Ordering code AL1321)
	CABLE LENGTHS	Power in: 7.87 inches / DMX In & Out: 59.06 inches
	MODES	- DW (2 channels)                      - Master/Satellite - DW + Intensity (3 channels)       - Stand-Alone Fixed CCT - DW 16-Bit Mode (4 channels)

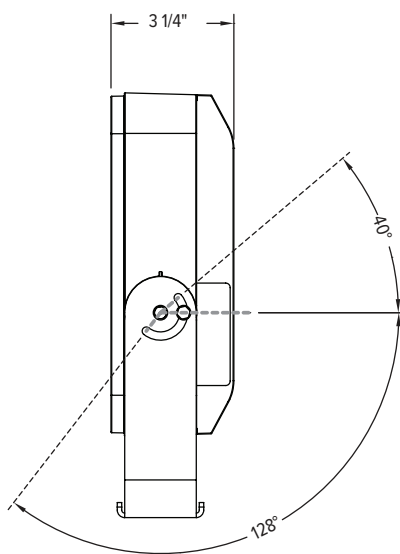
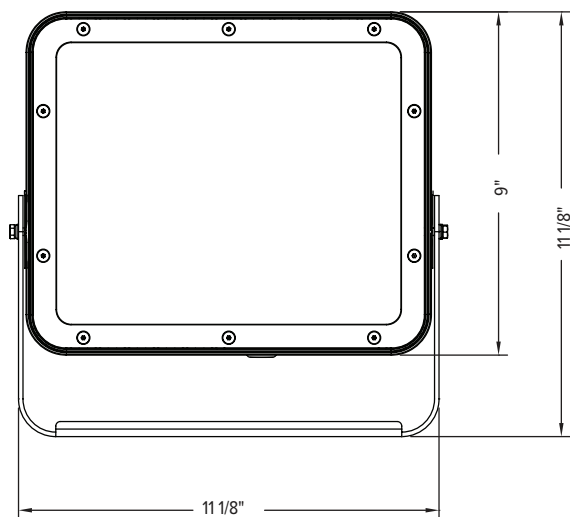
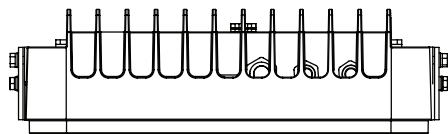
PHOTOMETRIC  * Values based on full output	LED	Dynamic White (3000K to 6500K)
	# LEDS	8 quad-chip LEDs
	DELIVERED LUMEN OUTPUT	4908 to 5440 lumens
	EFFICACY	Up to 74 lumens per watt
	L70 LUMEN MAINTENANCE	100,000 Hours @ 25°C
	# DISTRIBUTIONS	Four
	LIGHT CONTROL ACCESSORIES	Visor, Snoot, Spreading Diffusers (Contact Factory)

LIGHT DISTRIBUTIONS*	DISTRIBUTION	BEAM ANGLE	LUMENS	MAX CANDELA
	SPOT	7°	5440	221,337
	NARROW	10°	5296	119,324
	MEDIUM	23°	5061	27,370
	WIDE	35°	4908	13,009

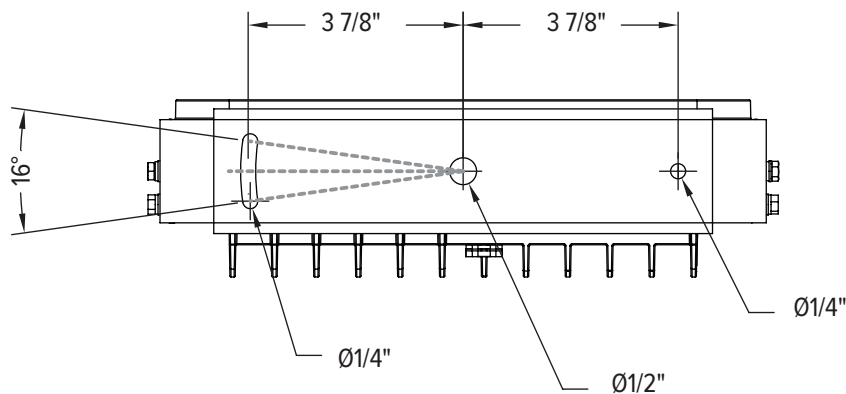
CERTIFICATIONS	SAFETY	ETL Listed for Wet Locations
	INGRESS PROTECTION	IP67
	IMPACT RATING	IK10
	EUROPEAN	RoHS

DIMENSIONS

All dimensions are shown in inches unless otherwise noted.



MOUNTING

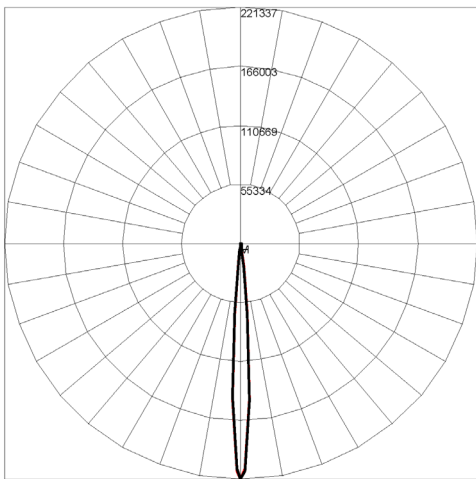


PHOTOMETRICS - RGBW CANDELA DISTRIBUTION

HORIZONTAL  
VERTICAL

SPOT 7°

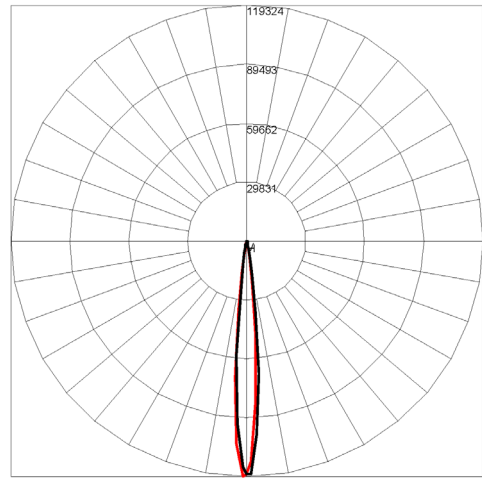
Maximum Candela = 221337 / 5440 lms



Maximum Candela = 221337.281 Located At Horizontal Angle = 0, Vertical Angle = 0  
H - Horizontal Axial Candela  
V - Vertical Axial Candela

NARROW 10°

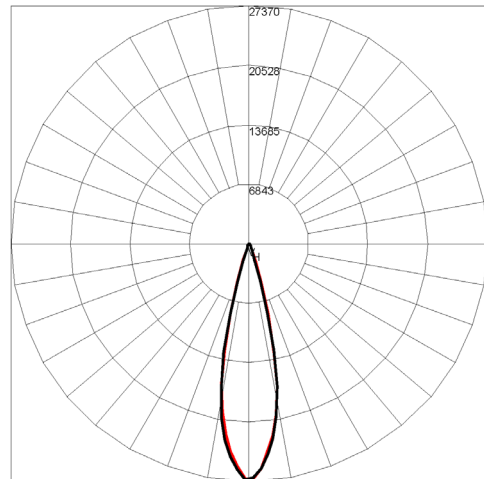
Maximum Candela = 119324 / 5296 lms



Maximum Candela = 119324.18 Located At Horizontal Angle = -1, Vertical Angle = 0  
H - Horizontal Axial Candela  
V - Vertical Axial Candela

MEDIUM 23°

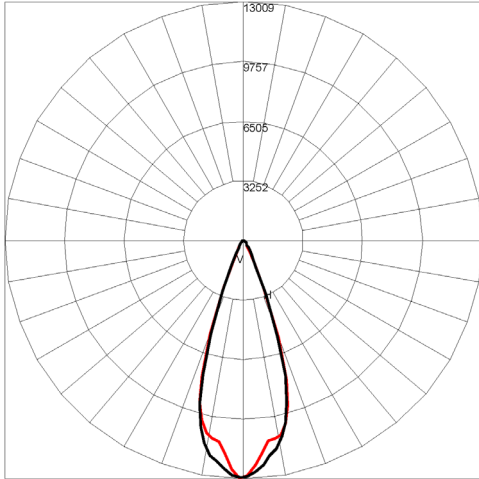
Maximum Candela = 27370 / 5061 lms



Maximum Candela = 27370.359 Located At Horizontal Angle = -1, Vertical Angle = -1  
H - Horizontal Axial Candela  
V - Vertical Axial Candela

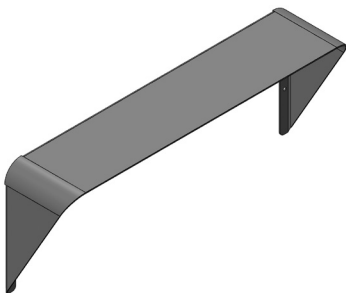
WIDE 35°

Maximum Candela = 13009 / 4908 lms

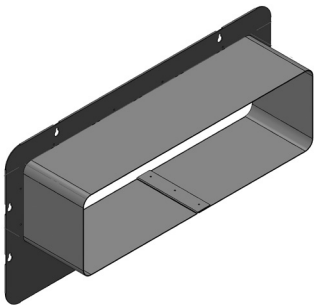


Maximum Candela = 13009.08 Located At Horizontal Angle = -1, Vertical Angle = -1  
H - Horizontal Axial Candela  
V - Vertical Axial Candela

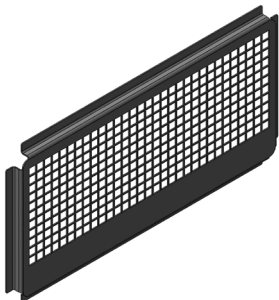
ACCESSORIES



**AL8232-XX\***  
Visor



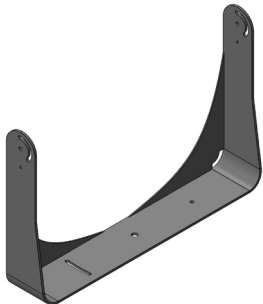
**AL8233-XX\***  
Snoot



**AL8234-XX\***  
Wire Guard



**AL1321**  
Infrared Configuration Remote



**AL8258-XX\***  
3G Mounting Yoke



**AL8227-XX\***  
300mm Yoke



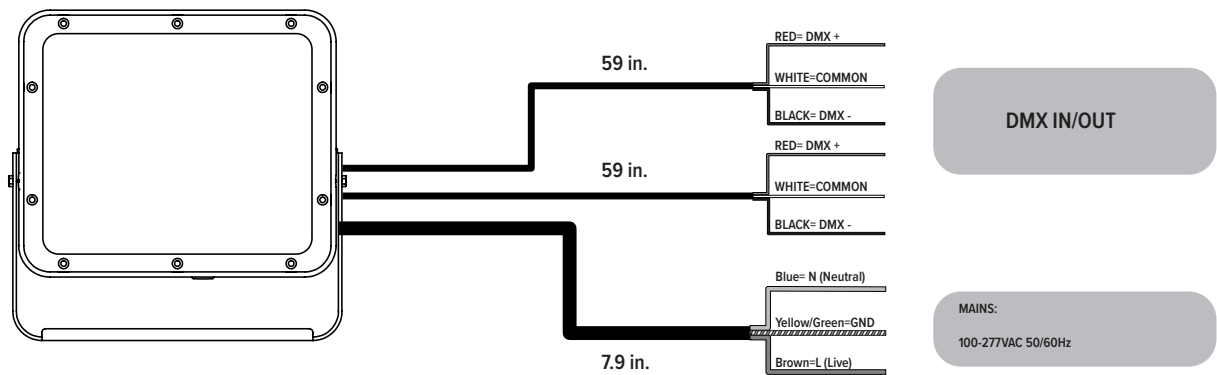
**AL8228-XX\***  
410 mm Yoke

**XX\*- ACCESSORY FINISHES**

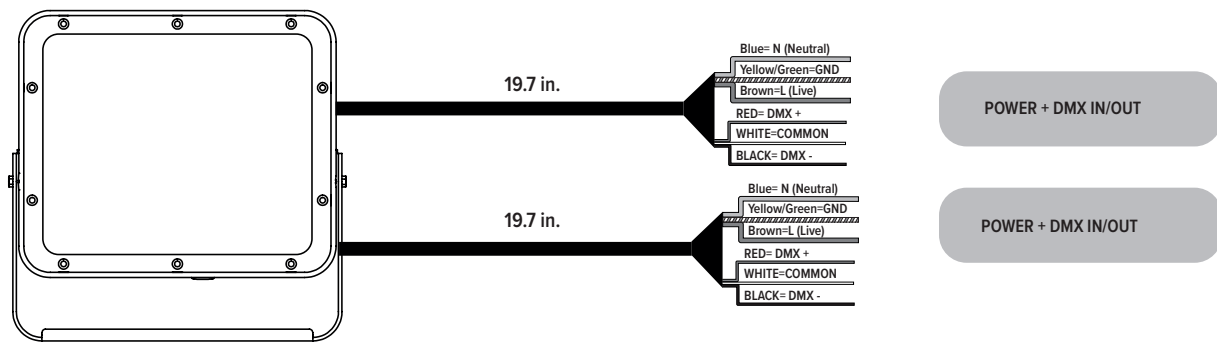
AG	Anthracite Grey
BL	Black
SG	Griven Silver Grey
WH	White
CC	Custom Color

Connection

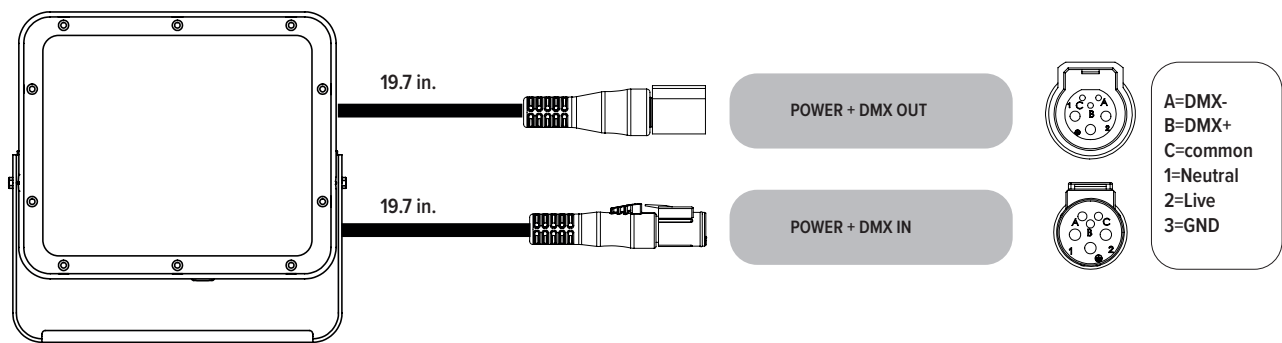
“S” type cable ( Power in, DMX In, DMX Out )



“M” type cable ( Monocable without connectors )



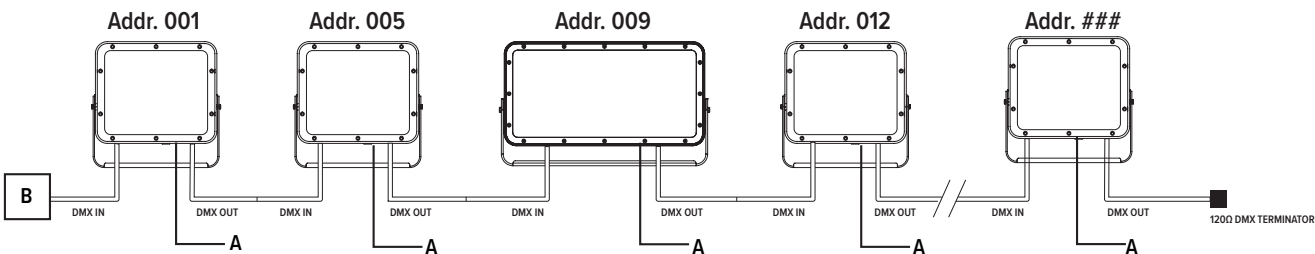
“C” type cable ( Monocable + connectors )



Note: the power and signal connections of S and M cable types can be carried out by using the connection kit included in the packing box. Follow the instructions provided along with the connection kit.

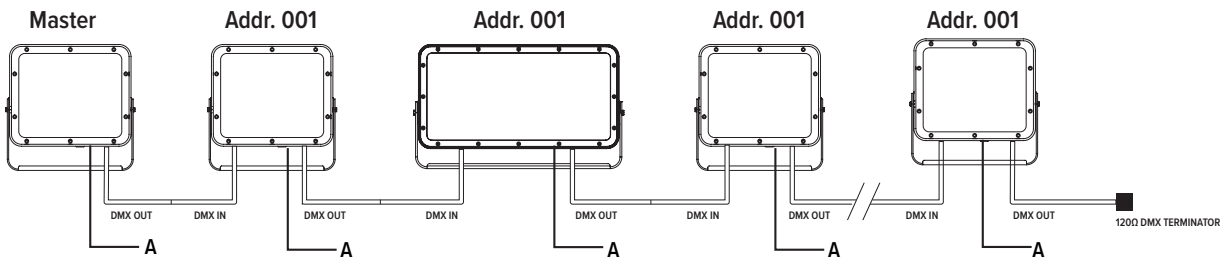
Operating modes

DMX Mode



Example with fixtures set to 4 DMX channels

Master-Slave / Automatic / Fixed color Mode ( Only DMX Mode #1 )



**WARNING !** in this mode, no DMX control device must be present along the line.