

# CAPITAL 100 MC

RGBW



## DESCRIPTION

CAPITAL 100MC delivers superior color-mixing through quad-chip LEDs and precision lens technology within a strikingly compact body. Tailored to meet the needs of demanding architectural lighting specifications, this flexible and highly versatile floodlight is suitable for a variety of installations where a reduced mounting footprint is desired.



Date: \_\_\_\_\_ Type: \_\_\_\_\_ Catalog Number: \_\_\_\_\_

Project Name: \_\_\_\_\_

## ORDERING INFORMATION

LUMINAIRE							
MODEL	CCT	CONTROL	CABLE	VOLTAGE	OPTIC *	FINISH	OPTION
CP100MC Capital 100 MC	RGBW30K RGBW (3000K White)	DMX-RDM DMX/RDM	S Power in (7.9 in.), DMX in, DMX out (59 in.)	UNV 120 - 277V	SP Spot 7°	AG Anthracite Grey	MG Marine Grade
CP100MCPE Capital 100 MC Polar Edition	RGBW40K RGBW (4000K White)		M Monocable without connectors (19.7 in.)		NB Narrow 10°	BL Black	3G 3G Mounting Yoke
			C Monocable with connectors (19.7 in.)		MB Medium 23°	SG Griven Silver Grey	
					WB Wide 35°	WH White	
						CC Custom RAL Color	

\* Consult factory for availability of other optical options.

CAPITAL 100 MC		
PHYSICAL	HOUSING	Die-cast Aluminum
	HOUSING DIMENSIONS	11½" W x 9" H x ø3¼"
	OVERALL DIMENSIONS	11½" W x 11½" H x ø3¼"
	WEIGHT	12 lbs
	EPA	0.79 ft²
	OPERATING TEMPERATURE	-40°C to 50°C (-40°F to 122°F)

ELECTRICAL	POWER CONSUMPTION	74 watts max
	AMPERAGE	0.6 A @ 120VAC 0.3 A @ 277VAC
	CONTROL	DMX-RDM. Includes onboard standalone sequencing or master-satellite operation without DMX control systems when programmed with infra-red configuration remote (Ordering code AL1321)
	CABLE LENGTHS	Power in: 7.87 inches / DMX In & Out: 59.06 inches
	MODES	- RGBW (4 channels)      - 16-Bit Mode (8 channels)      - Master Satellite Mode - RGBW + Intensity (5 channels)      - RGBW Calibrated White (4 channels) - RGBW + Intensity + Strobe (6 channels)      - Fixed Color

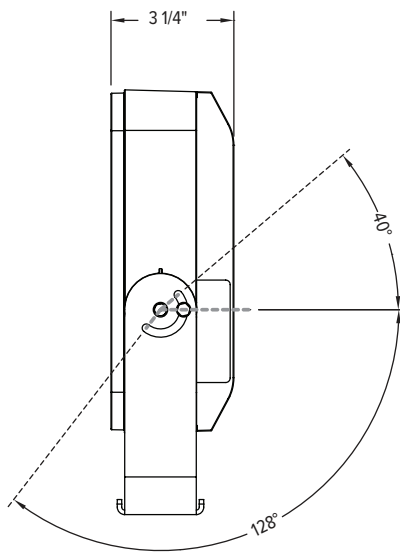
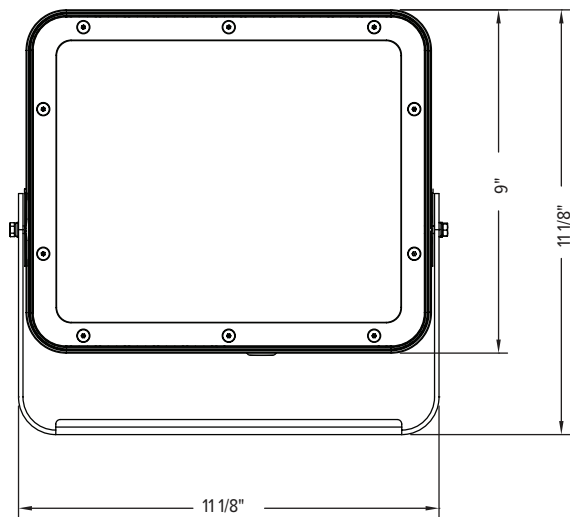
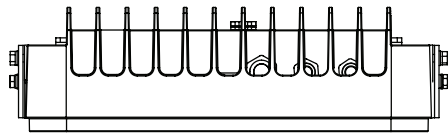
PHOTOMETRIC  * Values based on full output	LED	RGBW (3000K or 4000K White)
	# LEDS	8 quad-chip LEDs
	DELIVERED LUMEN OUTPUT	2887 to 3200 lumens
	EFFICACY	Up to 43 lumens per watt
	L70 LUMEN MAINTENANCE	100,000 Hours @ 25°C
	# DISTRIBUTIONS	Four
	LIGHT CONTROL ACCESSORIES	Visor, Snoot, Spreading Diffusers (Contact Factory)

LIGHT DISTRIBUTIONS*	DISTRIBUTION	BEAM ANGLE	LUMENS	MAX CANDELA
	SPOT	7°	3200	130,198
	NARROW	10°	3115	70,184
	MEDIUM	23°	2977	16,100
	WIDE	35°	2887	7,652

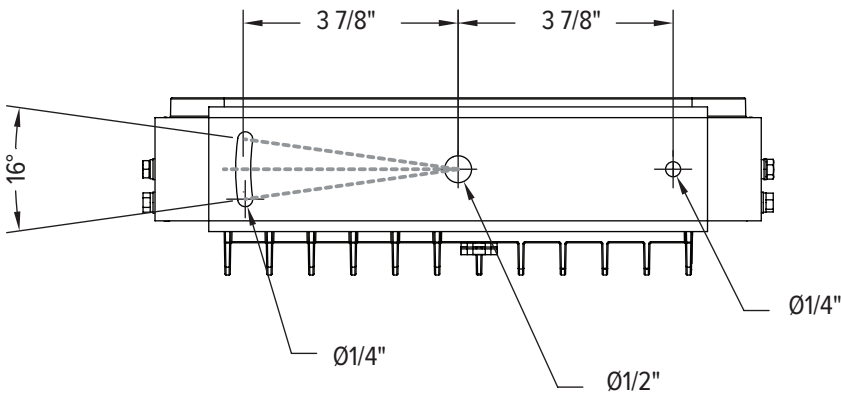
CERTIFICATIONS	SAFETY	ETL Listed for Wet Locations
	INGRESS PROTECTION	IP67
	IMPACT RATING	IK10
	EUROPEAN	RoHS

DIMENSIONS

All dimensions are shown in inches unless otherwise noted.



MOUNTING

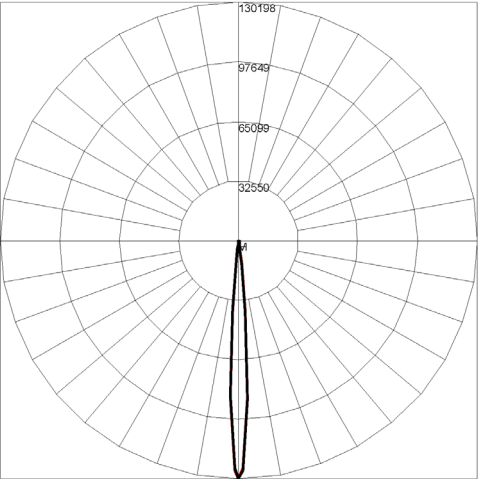


PHOTOMETRICS - RGBW CANDELA DISTRIBUTION

HORIZONTAL  
VERTICAL

SPOT 7°

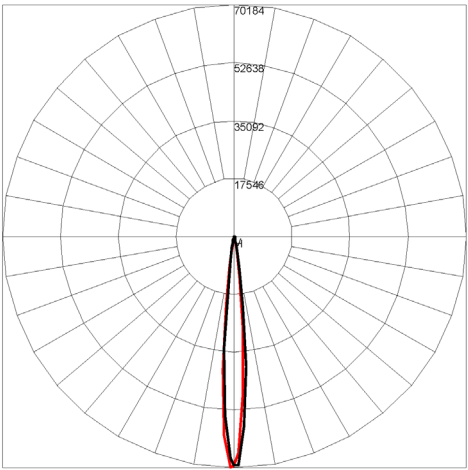
Maximum Candela = 130198 / 3200 lms



Maximum Candela = 130198.398 Located At Horizontal Angle = 0, Vertical Angle = 0  
H - Horizontal Axial Candela  
V - Vertical Axial Candela

NARROW 10°

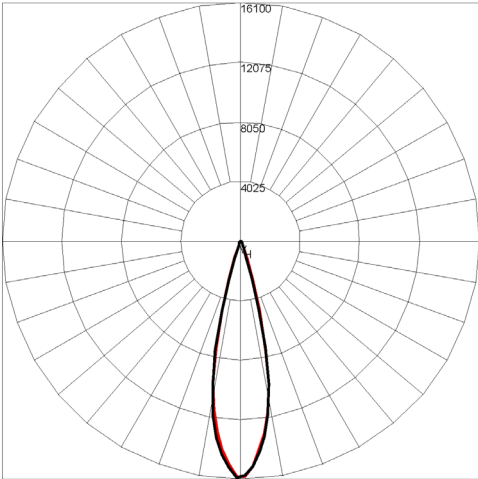
Maximum Candela = 70184 / 3115 lms



Maximum Candela = 70184.063 Located At Horizontal Angle = -1, Vertical Angle = 0  
H - Horizontal Axial Candela  
V - Vertical Axial Candela

MEDIUM 23°

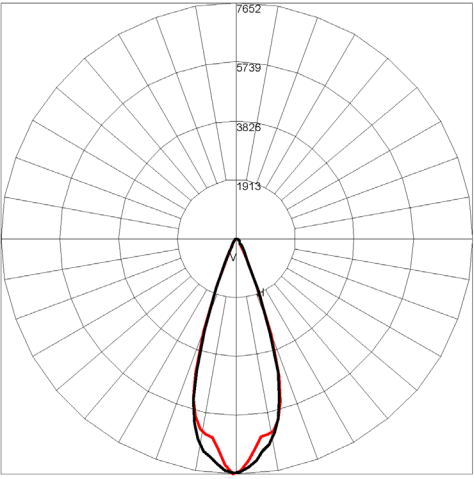
Maximum Candela = 16100 / 2977 lms



Maximum Candela = 16099.894 Located At Horizontal Angle = -1, Vertical Angle = -1  
H - Horizontal Axial Candela  
V - Vertical Axial Candela

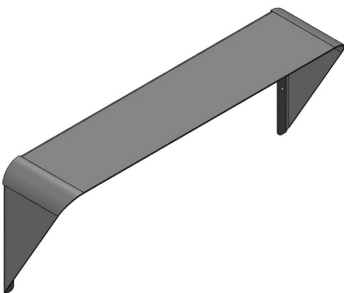
WIDE 35°

Maximum Candela = 7625 / 2887 lms

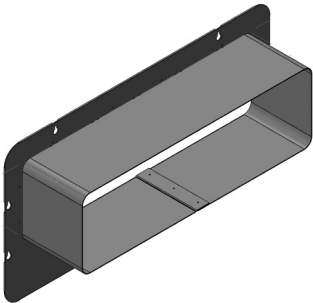


Maximum Candela = 7652.244 Located At Horizontal Angle = -1, Vertical Angle = -1  
H - Horizontal Axial Candela  
V - Vertical Axial Candela

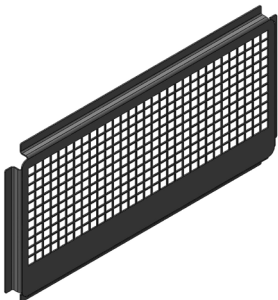
ACCESSORIES



**AL8232-XX\***  
Visor



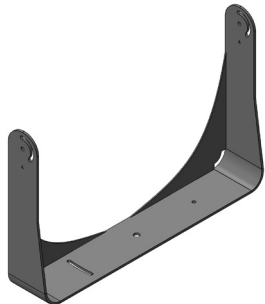
**AL8233-XX\***  
Snoot



**AL8234-XX\***  
Wire Guard



**AL1321**  
Infrared Configuration Remote



**AL8258-XX\***  
3G Mounting Yoke



**AL8227-XX\***  
300mm Yoke



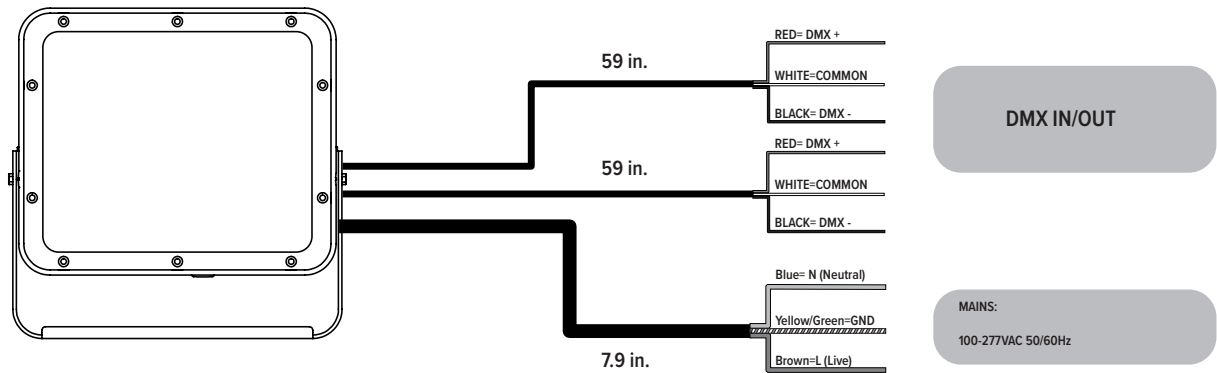
**AL8228-XX\***  
410 mm Yoke

**XX\*- ACCESSORY FINISHES**

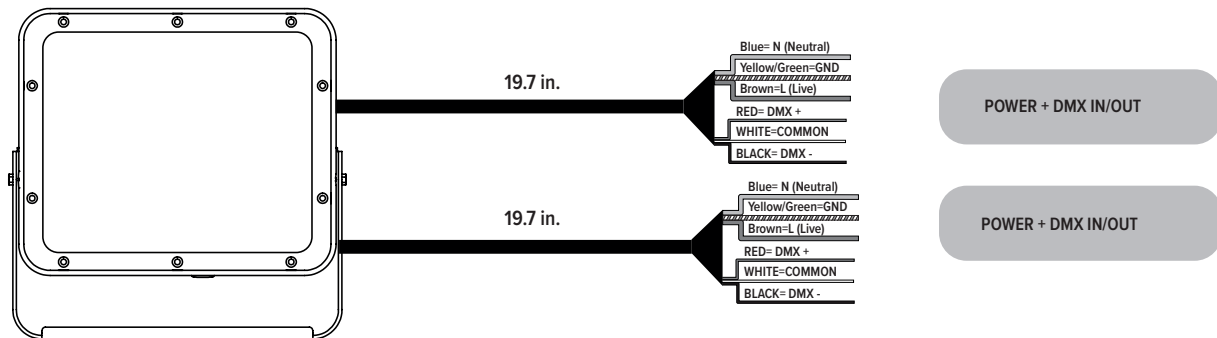
AG	Anthracite Grey
BL	Black
SG	Griven Silver Grey
WH	White
CC	Custom Color

Connection

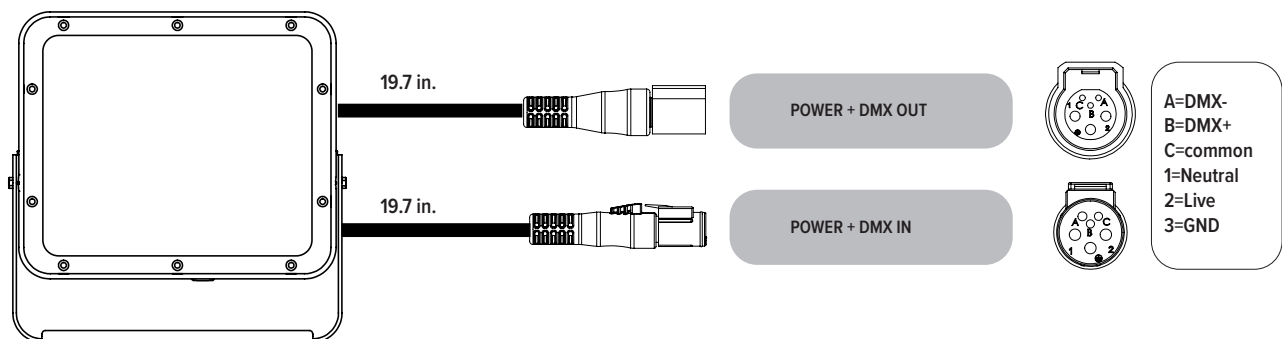
“S” type cable ( Power in, DMX In, DMX Out )



“M” type cable ( Monocable without connectors )



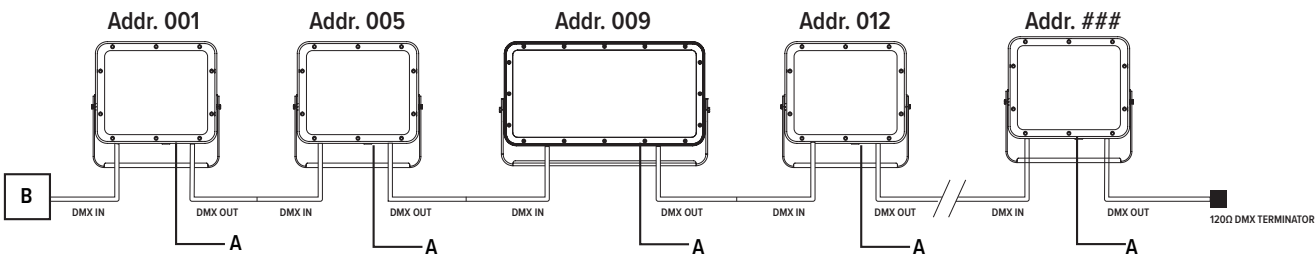
“C” type cable ( Monocable + connectors )



Note: the power and signal connections of S and M cable types can be carried out by using the connection kit included in the packing box. Follow the instructions provided along with the connection kit.

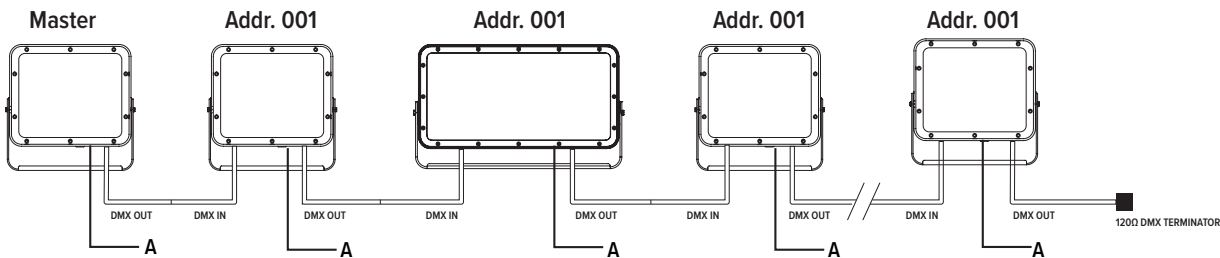
Operating modes

DMX Mode



Example with fixtures set to 4 DMX channels

Master-Slave / Automatic / Fixed color Mode ( Only DMX Mode #1 )



**WARNING !** in this mode, no DMX control device must be present along the line.