

DESCRIPTION

CAPITAL 100 US accentuates the designer’s palette with an ultra-narrow 4° beam using 20 high-power LEDs fitted with precision optics. Grazing of vertical columnar features or illumination of objects at distance both benefit from the high-performance of this luminaire.



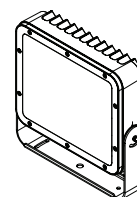
Date: \_\_\_\_\_ Type: \_\_\_\_\_ Catalog Number: \_\_\_\_\_

Project Name: \_\_\_\_\_

ORDERING INFORMATION

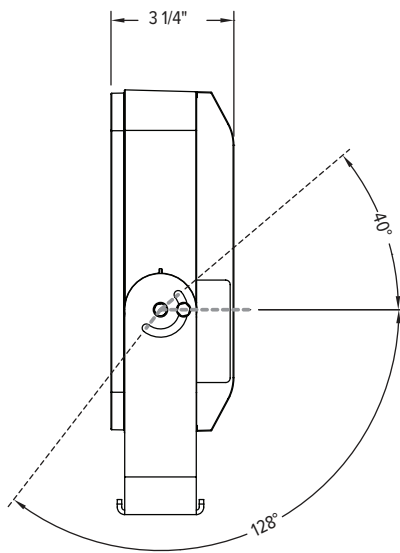
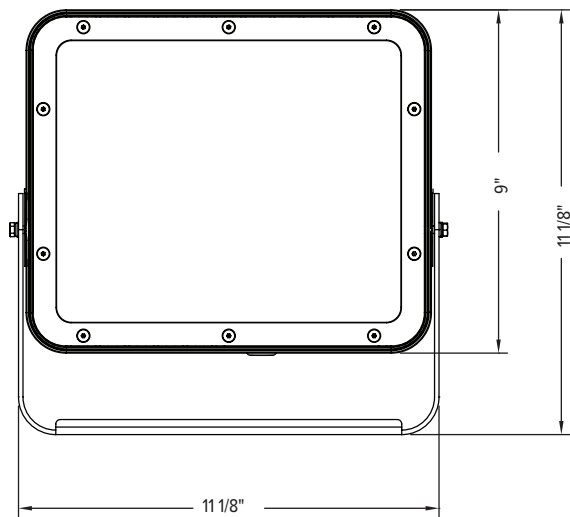
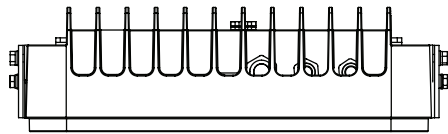
LUMINAIRE							
MODEL	CCT	CONTROL	CABLE	VOLTAGE	OPTIC *	FINISH	OPTION
CP100US Capital 100 US	RGBW30K RGBW (3000K White)	DMX-RDM DMX/RDM	S Power in (7.9 in.), DMX in, DMX out (59 in.)	UNV 120 - 277V	US Ultra Spot 3.2°	AG Anthracite Grey	MG Marine Grade
CP100USPE Capital 100 US Polar Edition	RGBW40K RGBW (4000K White)		M Monocable without connec- tors (19.7 in.)			BL Black	3G 3G Mounting Yoke
			C Monocable with connectors (19.7 in.)			SG Griven Silver Grey	
						WH White	
						CC Custom RAL Color	

		CAPITAL 100 US		
PHYSICAL	HOUSING	Die-cast Aluminum		
	HOUSING DIMENSIONS	11½" W x 9" H x ø3¼"		
	OVERALL DIMENSIONS	11½" W x 11½" H x ø3¼"		
	WEIGHT	11.2 lbs		
	EPA	0.79 ft²		
	OPERATING TEMPERATURE	-40°C to 50°C (-40°F to 122°F)		
ELECTRICAL	POWER CONSUMPTION	49 watts max		
	AMPERAGE	0.4 A @ 120VAC 0.2 A @ 277VAC		
	CONTROL	DMX-RDM. Includes onboard standalone sequencing or master-satellite operation without DMX control systems when programmed with infra-red configuration remote (Ordering code AL1321)		
	CABLE LENGTHS	Power in: 7.87 inches / DMX In & Out: 59.06 inches		
	MODES	- RGBW (4 channels)                      - 16-Bit Mode (8 channels)                      - Master Satellite Mode - RGBW + Intensity (5 channels)                      - RGBW Calibrated White (4 channels) -RGBW + Intensity + Strobe (6 channels) - Fixed Color		
PHOTOMETRIC	LED	RGBW (3000K or 4000K White)		
	# LEDS	20 high power LEDs		
	DELIVERED LUMEN OUTPUT	2106 lumens		
	EFFICACY	Up to 43 lumens per watt		
	L70 LUMEN MAINTENANCE	100,000 Hours @ 25°C		
	# DISTRIBUTIONS	One		
	LIGHT CONTROL ACCESSORIES	Visor, Snoot, Spreading Diffusers (Contact Factory)		
LIGHT DISTRIBUTIONS*	DISTRIBUTION	BEAM ANGLE	LUMENS	MAX CANDELA
	ULTRA SPOT	3.2°	2106	286,499
CERTIFICATIONS	SAFETY	ETL Listed for Wet Locations		
	INGRESS PROTECTION	IP67		
	IMPACT RATING	IK09		
	EUROPEAN	RoHS		

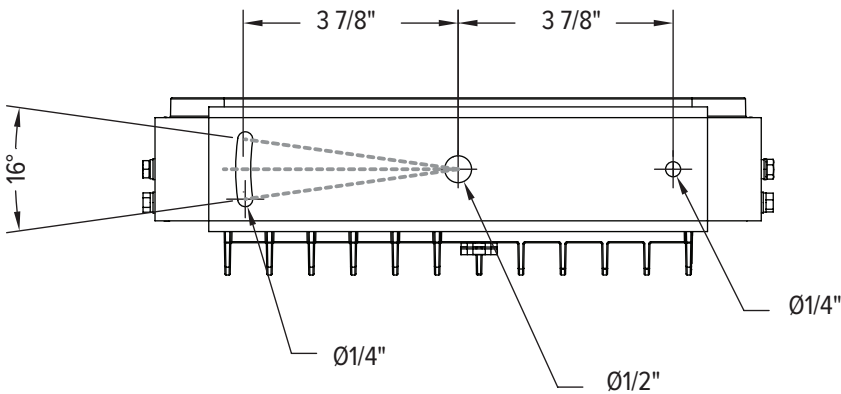


DIMENSIONS

All dimensions are shown in inches unless otherwise noted.



MOUNTING

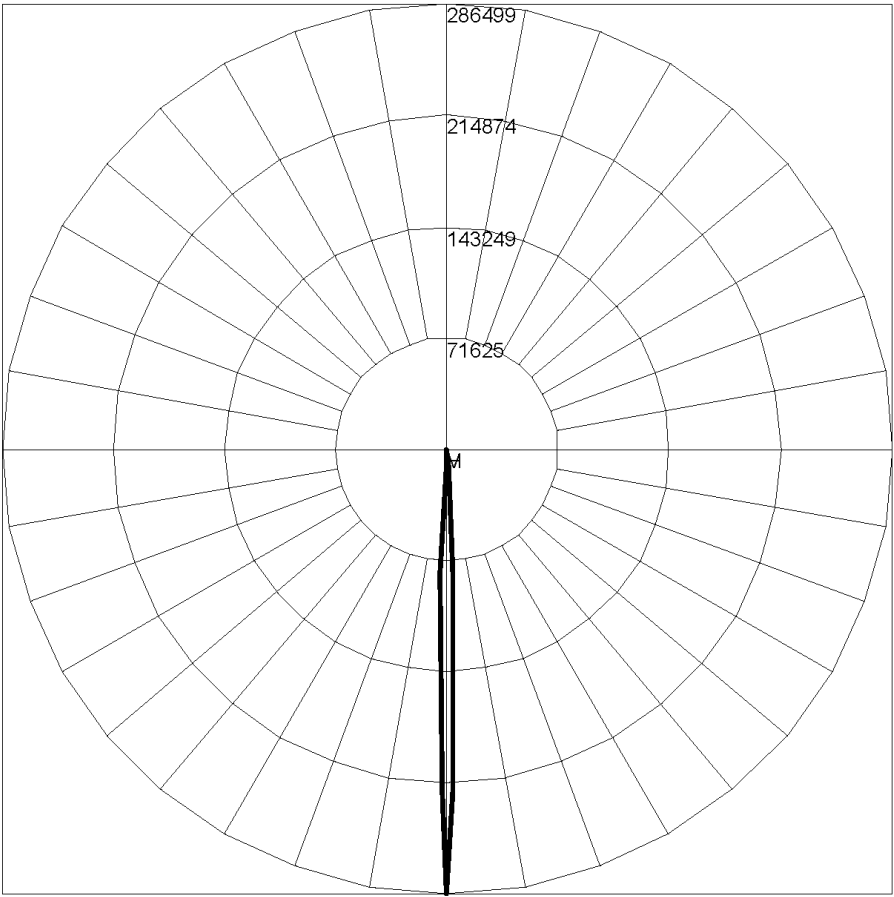


PHOTOMETRICS - RGBW CANDELA DISTRIBUTION

HORIZONTAL  
VERTICAL

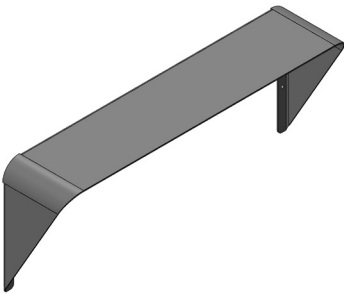
ULTRA SPOT 3.2°

Maximum Candela = 286499 / 2106 lms per luminaire

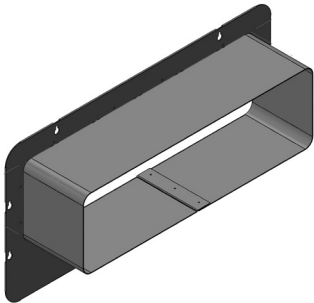


Maximum Candela = 286498.72    Located At Horizontal Angle = 0, Vertical Angle = 0  
H - Horizontal Axial Candela  
V - Vertical Axial Candela

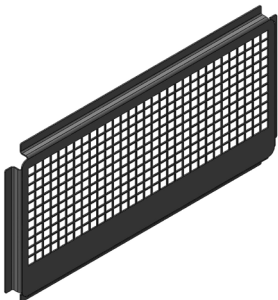
ACCESSORIES



**AL8232-XX\***  
Visor



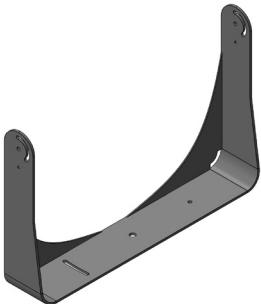
**AL8233-XX\***  
Snoot



**AL8234-XX\***  
Wire Guard



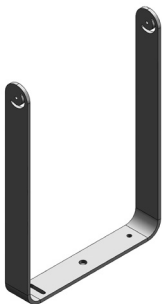
**AL1321**  
Infrared Configuration Remote



**AL8258-XX\***  
3G Mounting Yoke



**AL8227-XX\***  
300mm Yoke



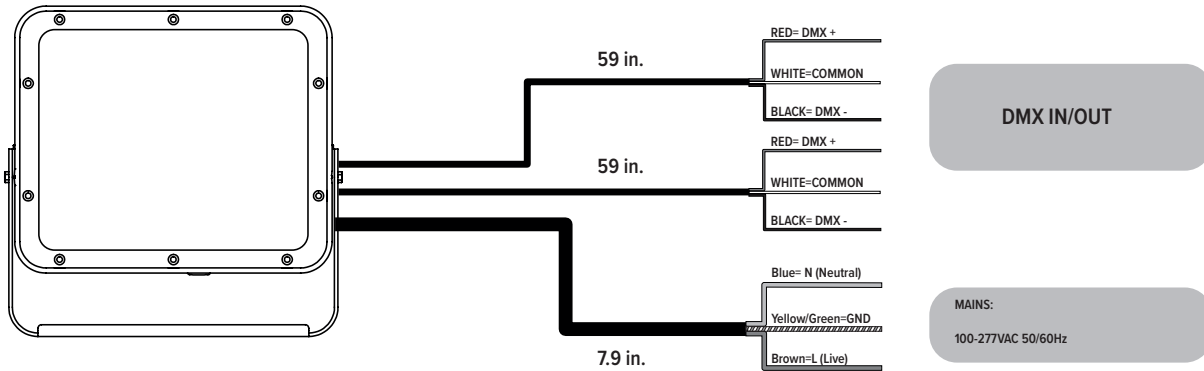
**AL8228-XX\***  
410 mm Yoke

**XX\*- ACCESSORY FINISHES**

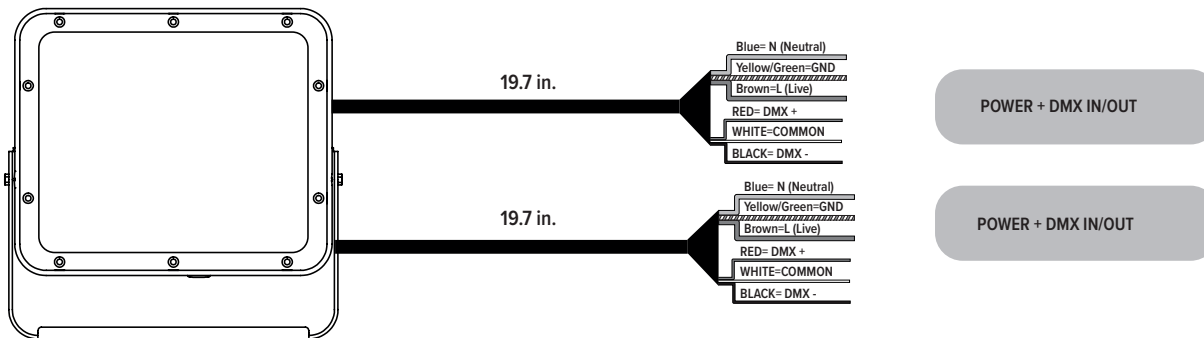
AG	Anthracite Grey
BL	Black
SG	Griven Silver Grey
WH	White
CC	Custom Color

## Connection

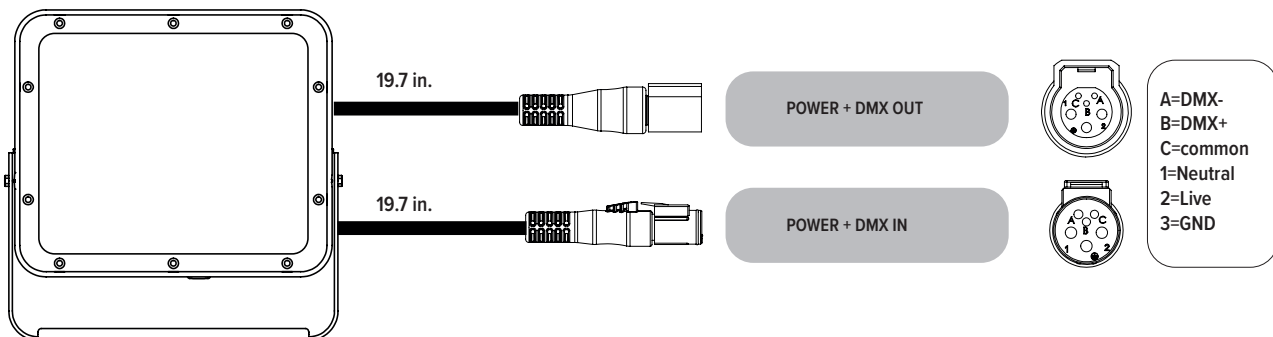
“S” type cable ( Power in, DMX In, DMX Out )



“M” type cable ( Monocable without connectors )



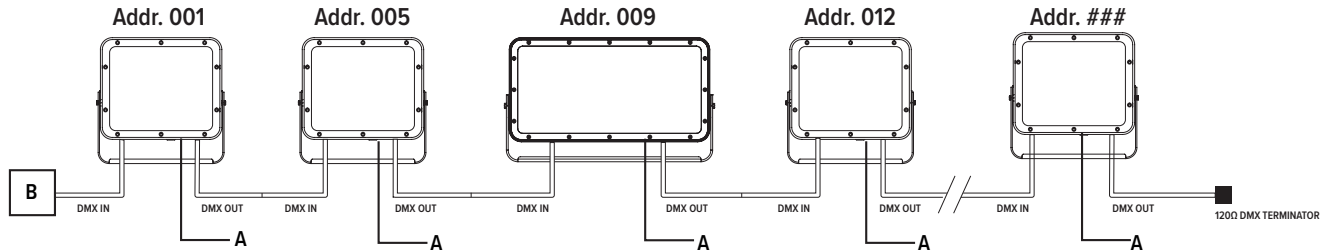
“C” type cable ( Monocable + connectors )



Note: the power and signal connections of S and M cable types can be carried out by using the connection kit included in the packing box. Follow the instructions provided along with the connection kit.

## Operating modes

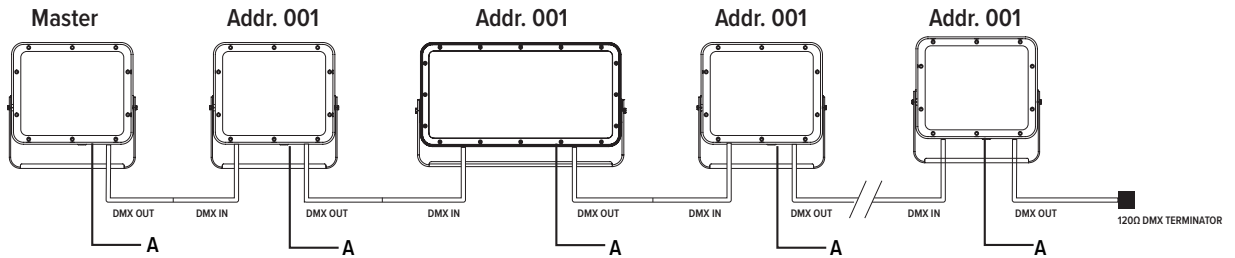
### DMX Mode



Example with fixtures set to 4 DMX channels

### Master-Slave / Automatic / Fixed color Mode

( Only DMX Mode #1 )



**WARNING !** in this mode, no DMX control device must be present along the line.