

# CAPITAL 100 US

Static White



## DESCRIPTION

CAPITAL 100 US accentuates the designer’s palette with an ultra-narrow 4° beam using 20 high-power LEDs fitted with precision optics. Grazing of vertical columnar features or illumination of objects at distance both benefit from the high-performance of this luminaire.



Date: \_\_\_\_\_ Type: \_\_\_\_\_ Catalog Number: \_\_\_\_\_

Project Name: \_\_\_\_\_

## ORDERING INFORMATION

LUMINAIRE							
MODEL	CCT	CONTROL	CABLE	VOLTAGE	OPTIC *	FINISH §	OPTION
CP100US Capital 100 US	27K 2700K	DMX-RDM DMX/RDM	S Power in (7.9 in.), DMX in, DMX out (59 in.)	UNV 120 - 277V	US Ultra Spot 3.2°	AG Anthracite Grey	MG Marine Grade
CP100USPE Capital 100 US Polar Edition	30K 3000K		M Monocable without connectors (19.7 in.)			BL Black	3G 3G Mounting Yoke
	40K 4000K		C Monocable with connectors (19.7 in.)			SG Griven Silver Grey	
						WH White	
						CC Custom RAL Color	

	CAPITAL 100 US	
PHYSICAL	HOUSING	Die-cast Aluminum
	HOUSING DIMENSIONS	11 $\frac{1}{8}$ " W x 9" H x $\varnothing$ 3 $\frac{1}{4}$ "
	OVERALL DIMENSIONS	11 $\frac{1}{8}$ " W x 11 $\frac{1}{8}$ " H x $\varnothing$ 3 $\frac{1}{4}$ "
	WEIGHT	11.2 lbs
	EPA	0.79 ft <sup>2</sup>
	OPERATING TEMPERATURE	-40°C to 50°C (-40°F to 122°F)

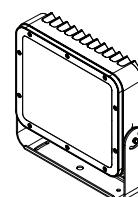
ELECTRICAL	POWER CONSUMPTION	51 watts max
	AMPERAGE	0.4 A @ 120VAC 0.2 A @ 277VAC
	CONTROL	DMX-RDM. Includes onboard standalone sequencing or master-satellite operation without DMX control systems when programmed with infra-red configuration remote (Ordering code AL1321)
	MODES	- Intensity (1 channel)      - Stand-Alone Dimmer

PHOTOMETRIC	LED	Static White (2700K, 3000K or 4000K)
	# LEDS	20 high power LEDs
	DELIVERED LUMEN OUTPUT	3915 lumens
	EFFICACY	Up to 76 lumens per watt
	L70 LUMEN MAINTENANCE	100,000 Hours @ 25°C
	# DISTRIBUTIONS	One
	LIGHT CONTROL ACCESSORIES	Visor, Snoot, Spreading Diffusers (Contact Factory)

Values based on full output

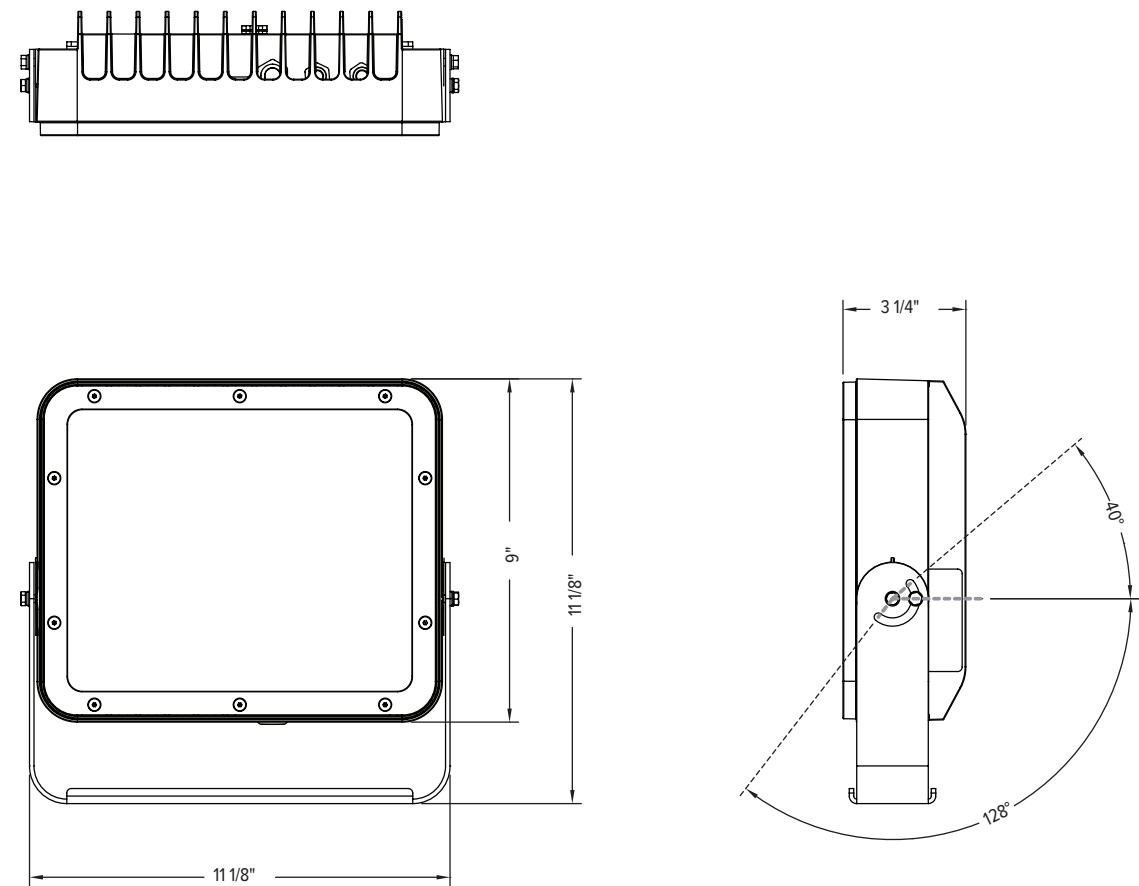
LIGHT DISTRIBUTIONS	DISTRIBUTION	BEAM ANGLE	LUMENS	MAX CANDELA
	ULTRA SPOT	4°	3915	532,589

CERTIFICATIONS	SAFETY	ETL Listed for Wet Locations
	INGRESS PROTECTION	IP67
	IMPACT RATING	IK09
	EUROPEAN	RoHS

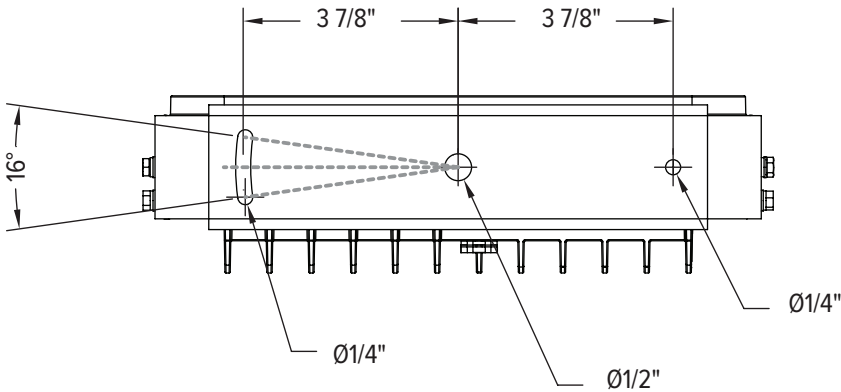


DIMENSIONS

All dimensions are shown in inches unless otherwise noted.



MOUNTING

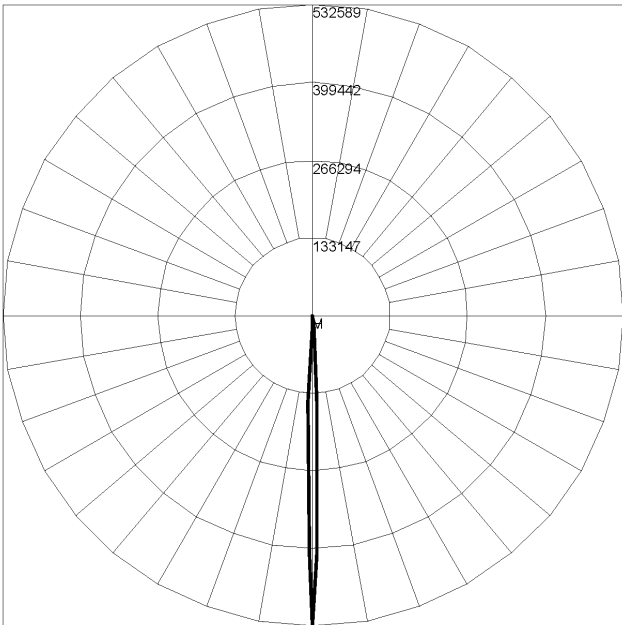


PHOTOMETRICS - STATIC WHITE CANDELA DISTRIBUTION

HORIZONTAL  
VERTICAL

ULTRA SPOT 4° - Warm White 3000K

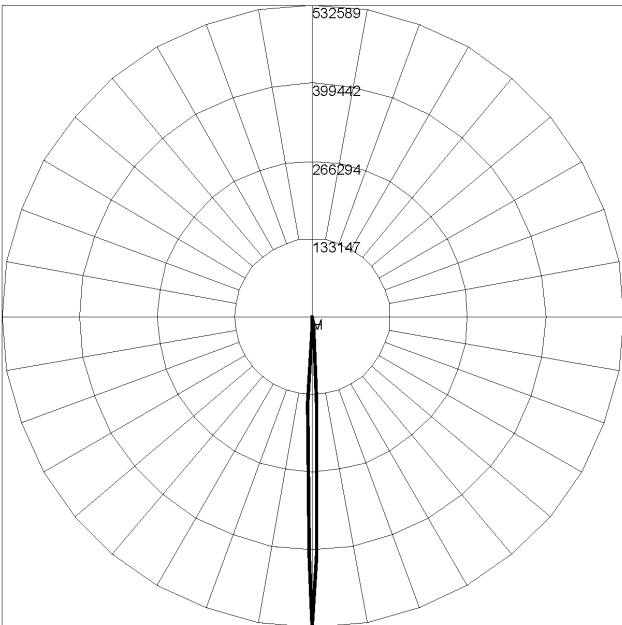
Maximum Candela = 532589 / 3915 lms



Maximum Candela = 532588.91 Located At Horizontal Angle = 0, Vertical Angle = 0  
H - Horizontal Axial Candela  
V - Vertical Axial Candela

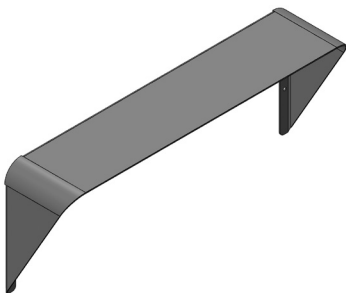
ULTRA SPOT 4° - Neutral White 4000K

Maximum Candela = 532589 / 3915 lms

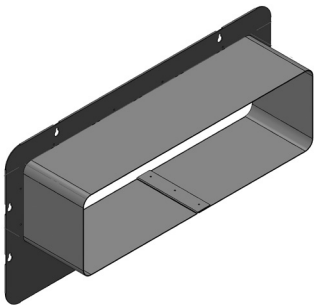


Maximum Candela = 532588.91 Located At Horizontal Angle = 0, Vertical Angle = 0  
H - Horizontal Axial Candela  
V - Vertical Axial Candela

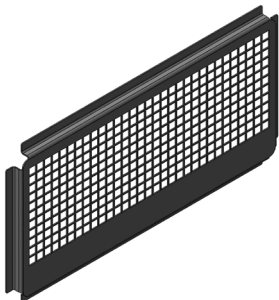
ACCESSORIES



**AL8232- XX\***  
Visor



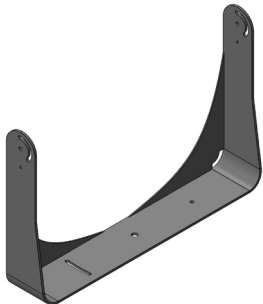
**AL8233- XX\***  
Snoot



**AL8234- XX\***  
Wire Guard



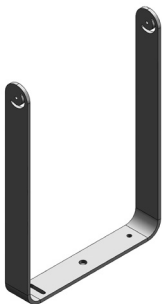
**AL1321**  
Infrared Configuration Remote



**AL8258- XX\***  
3G Mounting Yoke



**AL8227- XX\***  
300mm Yoke



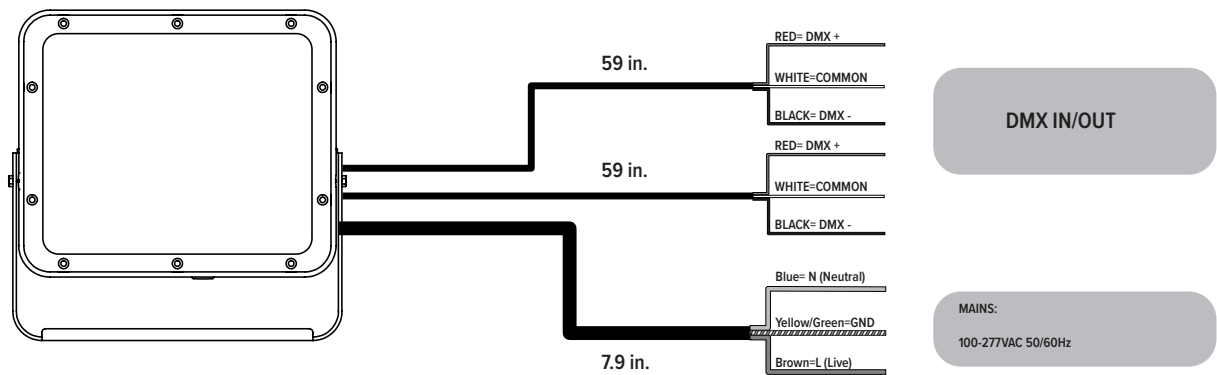
**AL8228- XX\***  
410 mm Yoke

**XX\*- ACCESSORY FINISHES**

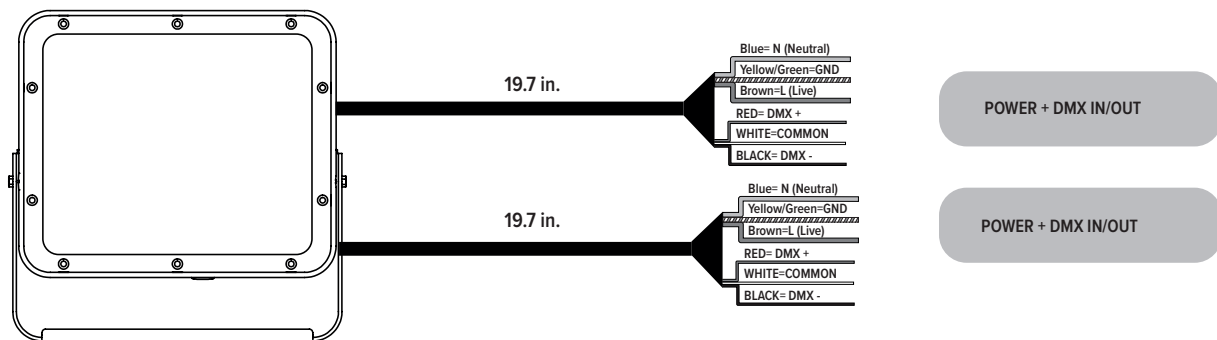
AG	Anthracite Grey
BL	Black
SG	Griven Silver Grey
WH	White
CC	Custom Color

Connection

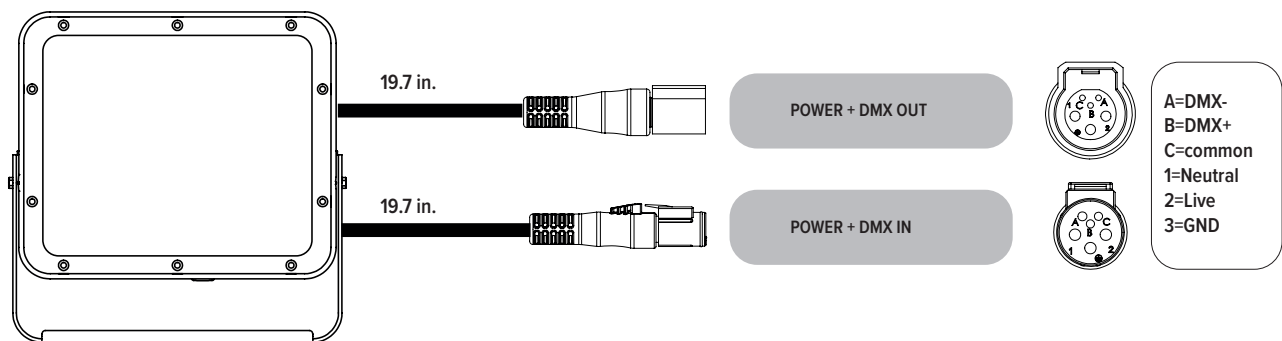
“S” type cable ( Power in, DMX In, DMX Out )



“M” type cable ( Monocable without connectors )



“C” type cable ( Monocable + connectors )

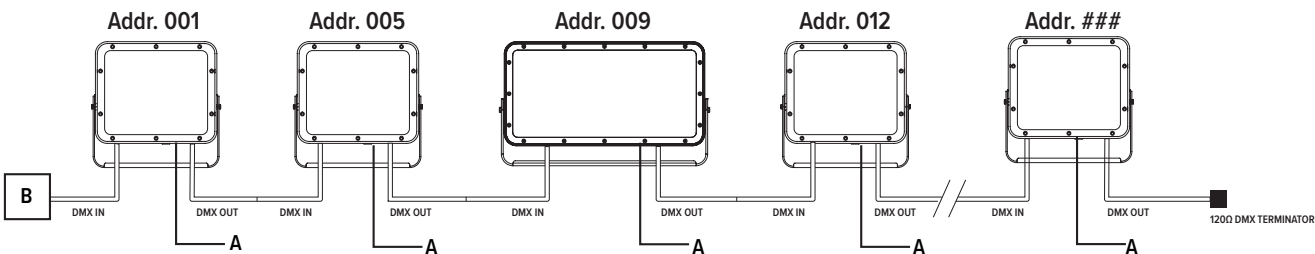


Note: the power and signal connections of S and M cable types can be carried out by using the connection kit included in the packing box. Follow the instructions provided along with the connection kit.

"X" type cable- Contact Factory

Operating modes

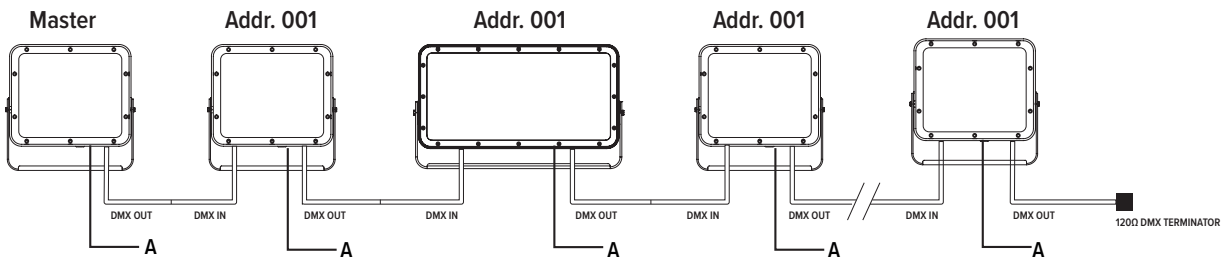
DMX Mode



Example with fixtures set to 4 DMX channels

Master-Slave / Automatic

( Only DMX Mode #1 )



**WARNING !** in this mode, no DMX control device must be present along the line.