

CAPITAL 200 US

Static White



DESCRIPTION

CAPITAL 200 US accentuates the designer's palette with an ultra-narrow 3.2° beam using 40 high-power LEDs fitted with precision optics. Grazing of vertical columnar features or illumination of objects at distance both benefit from the high-performance of this luminaire.



Date: _____ Type: _____ Catalog Number: _____

Project Name: _____

ORDERING INFORMATION

LUMINAIRE							
MODEL	CCT	CONTROL	CABLE	VOLTAGE	OPTIC	FINISH	OPTION
CP200US Capital 200 Ultra-Spot	27K 2700K	DMX-RDM DMX-RDM	S Power in (7.9"), DMX in, DMX out (59")	UNV 120 - 277V	US Ultra Spot 3.2°	AG Anthracite Grey	AST Anti-Saline Treatment
CP200USPE Capital 200 Ultra-Spot Polar Edition	30K 3000K		M Monocable Without Connectors (19.7")			BL Black	3G 3G Mounting Yoke
	40K 4000K		C Monocable With Connectors (19.7")			SG Griven Silver Grey	
						WH White	
						CC Custom RAL Color	

Custom options are available; consult factory via phone at (864) 487-3535 ext. 258 or via email at DesignServices@EXP-Brands.com.

See Page 5 for ordering information of available accessories.



CAPITAL 200 US		
PHYSICAL	HOUSING	Die-Cast Aluminum
	OVERALL DIMENSIONS	18.7" L x 3.5" W x 10.9" H
	WEIGHT	21 Pounds
	OPERATING TEMPERATURE	-40°F to 122°F (-40°C to 50°C)
	DRIVER LOCATION	Integral

ELECTRICAL	POWER	106 Watts		
	POWER SUPPLY	100 to 277VAC; 50-60Hz		
	CURRENT	0.88 Amps at 120 Volts 0.38 Amps at 277 Volts		
	CONTROL	DMX-RDM, Standalone Onboard Sequencing, or Master-Satellite Operation		
	CABLE	S Cable	M Cable	C Cable
		Power In, DMX In, DMX Out Cables	6-Polarity In and Out Power/Data Monocable Without Connectors	6-Polarity In and Out Power/Data Monocable With Connectors
	CABLE LENGTH	59"	19.7"	19.7"
	MODES	- Intensity (1 Channel) - Stand-Alone Dimmer		

PHOTOMETRIC	LED	Static White 2700K, 3000K, or 4000K		
	NUMBER OF LEDS	40 High Power LEDs		
	DELIVERED LUMEN OUTPUT	up to 6746 lumens		
	EFFICACY	up to 64 lumens per watt		
	LUMEN MAINTENANCE	L70 > 100,000 Hours at 77°F*		
	LIGHT CONTROL ACCESSORIES	Snoot, Visor Available		

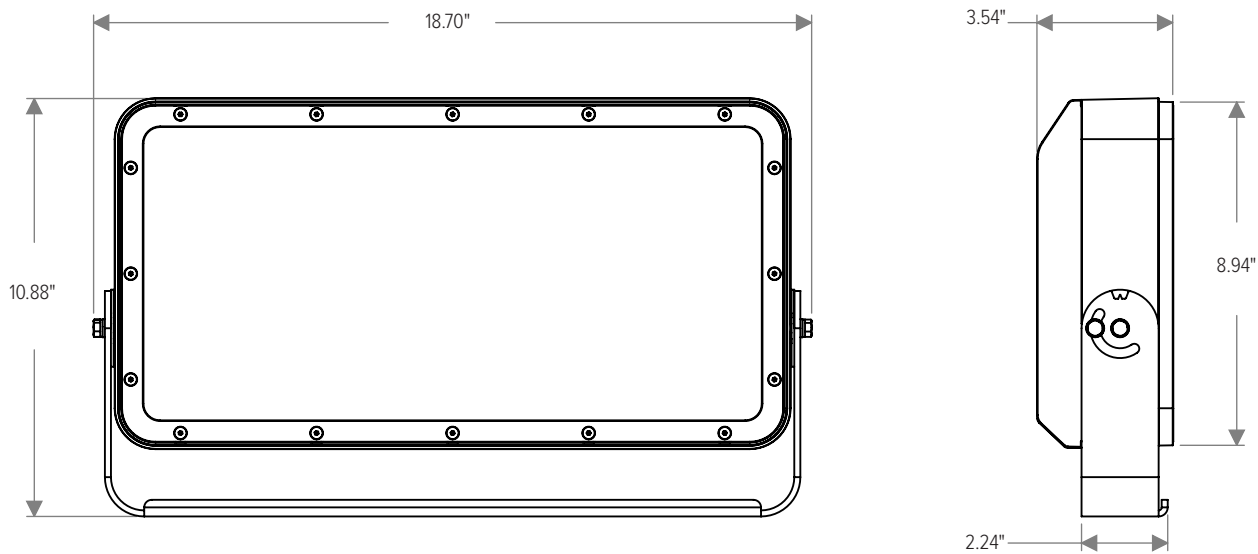
LIGHT DISTRIBUTIONS	DISTRIBUTION	BEAM ANGLE	2700K & 3000K		4000K	
			LUMENS	EFFICACY	LUMENS	EFFICACY
	Ultra-Spot	3.2°	6265	59	6746	64

CERTIFICATIONS	SAFETY	ETL Certified for Damp Locations			
	INGRESS PROTECTION	IP67			
	IMPACT RATING	IK09			
	WARRANTY	Limited Five Year Warranty			

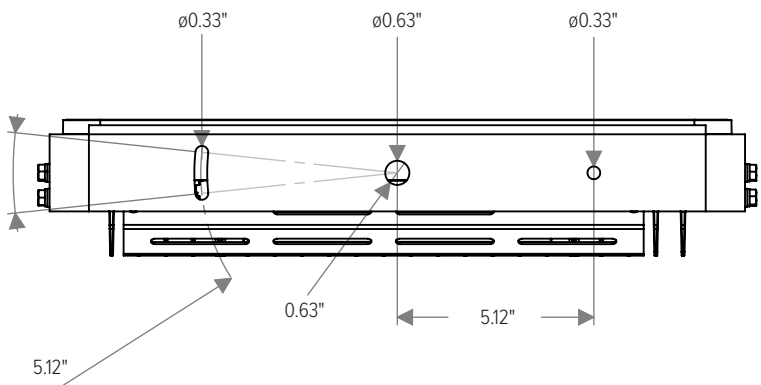
* LED life may vary under actual field conditions due to external factors. Lifetime estimates are generated from actual testing in a controlled environment. Values are conservatively derived from those numbers.

DIMENSIONS

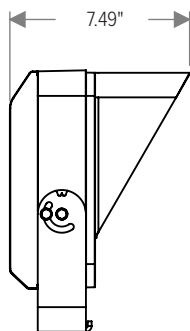
All dimensions are shown in inches unless otherwise noted.



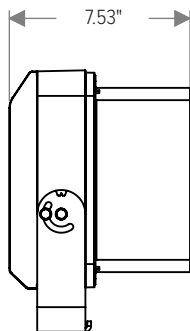
MOUNTING



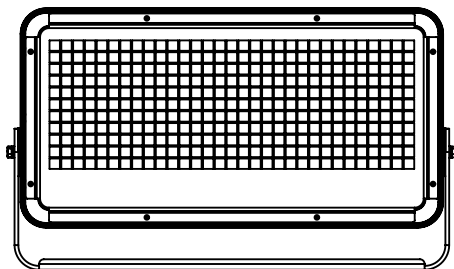
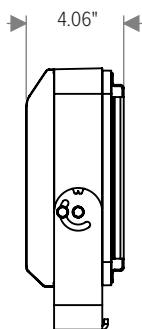
ACCESSORY DIMENSIONS



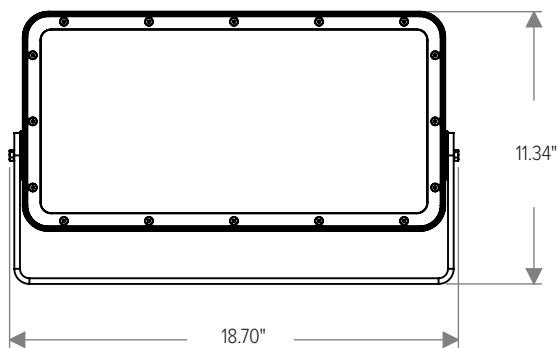
With Visor (CP200-VISOR-XX)



With Snoot (CP200-SNOOT-XX)



With Wire Guard (CP200-WIREGUARD-XX)



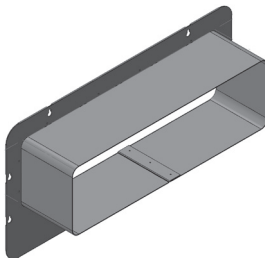
With 3G Mounting Yoke (Ordered with Luminaire)

ACCESSORIES

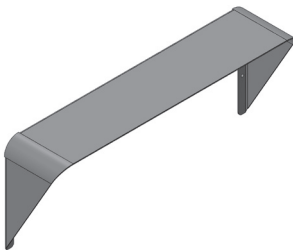
NOTE: Accessories are ordered and shipped separately from luminaire for field installation.
-XX* indicates a painted accessory. See bottom of page for painted accessory ordering information.



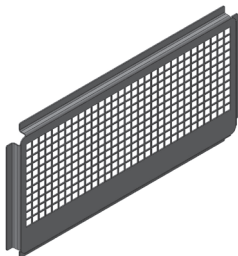
IR-CONFIG-REMOTE
Infrared Configuration Remote



CP200-SNOOT-XX*
Snoot



CP200-VISOR-XX*
Visor



CP200-WIREGUARD-XX*
Wire Guard

ORDERING INFORMATION

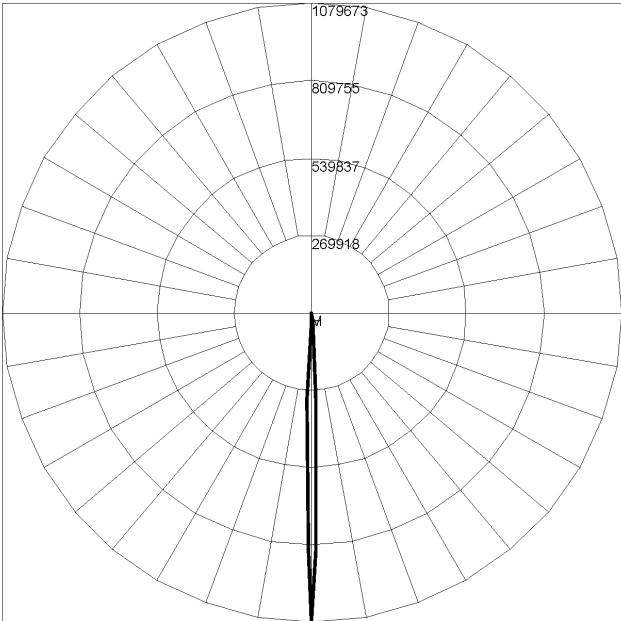
PAINTED ACCESSORIES					
MODEL		FINISH (*-XX)		OPTION	
CP200-SNOOT	Snoot	AG	Anthracite Grey	AST	Anti-Saline Treatment
CP200-VISOR	Visor	BL	Black		
CP200-WIREGUARD	Wire Guard	SG	Griven Silver Grey		
		WH	White		
		CC	Custom RAL Color		

PHOTOMETRICS - STATIC WHITE CANDELA DISTRIBUTION

HORIZONTAL
VERTICAL

ULTRA SPOT 3.2°- 2700K & 3000K

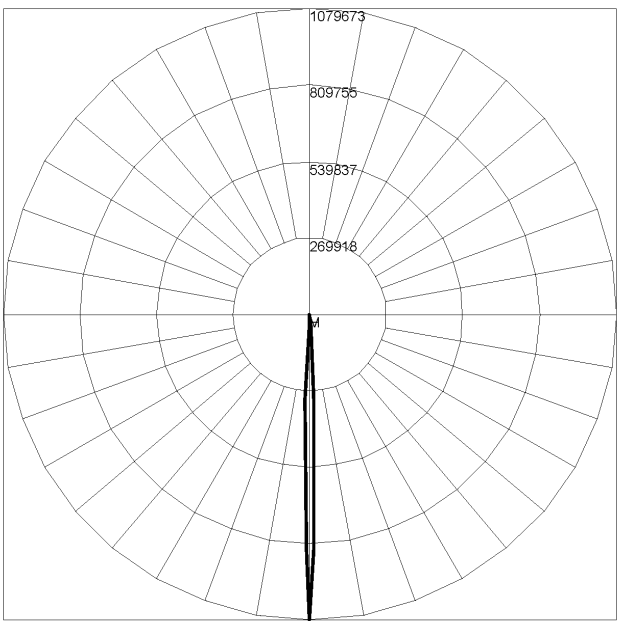
Maximum Candela = 1079673 / 6265 Lumens



Maximum Candela = 1079673.11 Located At Horizontal Angle = 0, Vertical Angle = 0
H - Horizontal Axial Candela
V - Vertical Axial Candela

ULTRA SPOT 3.2°- 4000K

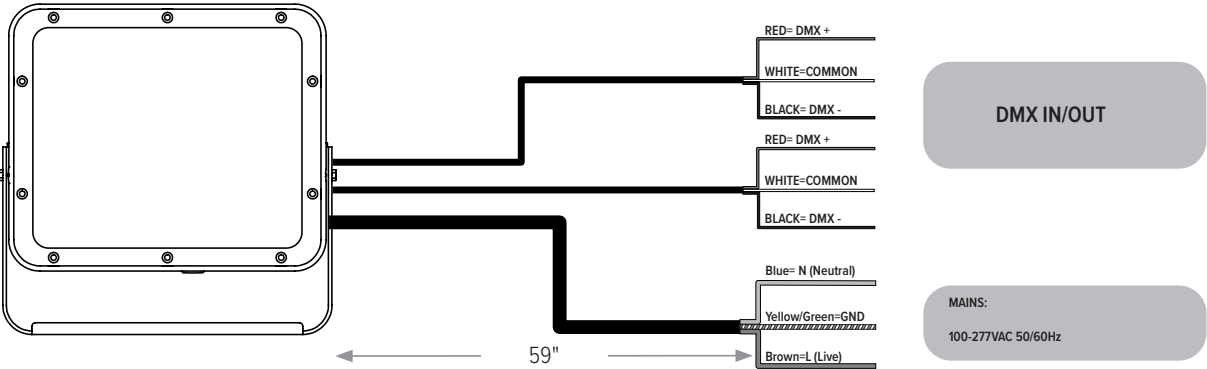
Maximum Candela = 1079673 / 6746 Lumens



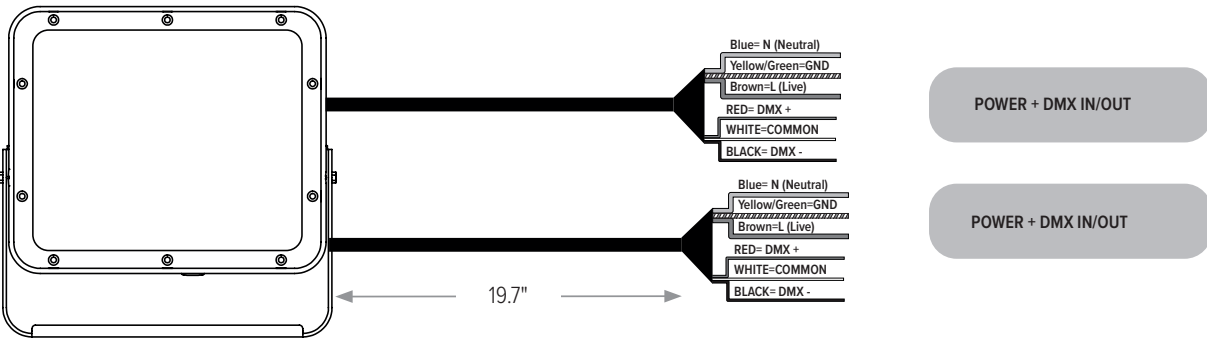
Maximum Candela = 1079673.11 Located At Horizontal Angle = 0, Vertical Angle = 0
H - Horizontal Axial Candela
V - Vertical Axial Candela

CONNECTIONS

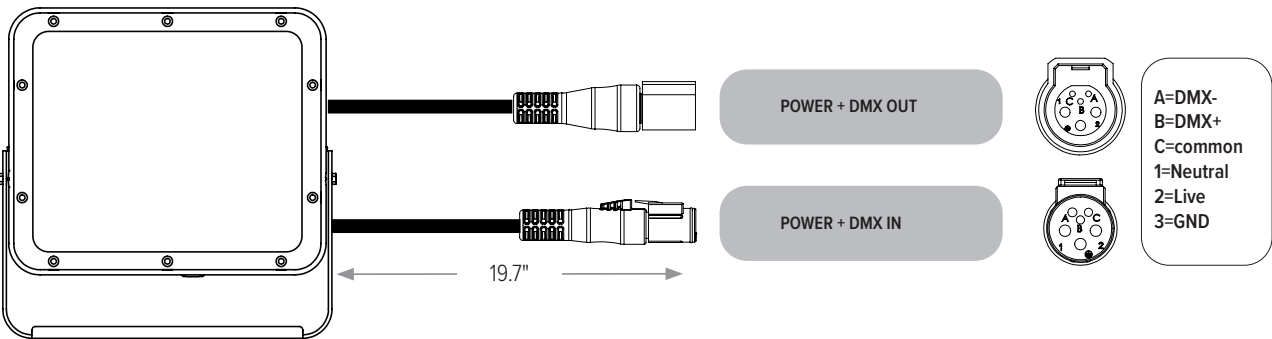
"S" Type Cable (Power In, DMX In, DMX Out)



"M" Type Cable (Monocable Without Connectors)



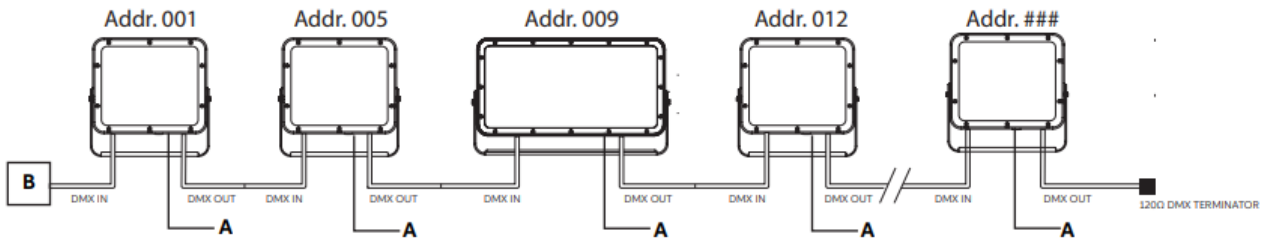
"C" Type Cable (Monocable With Connectors)



Note: the power and signal connections of S and M cable types can be carried out by using the connection kit included in the packing box. Follow the instructions provided along with the connection kit.

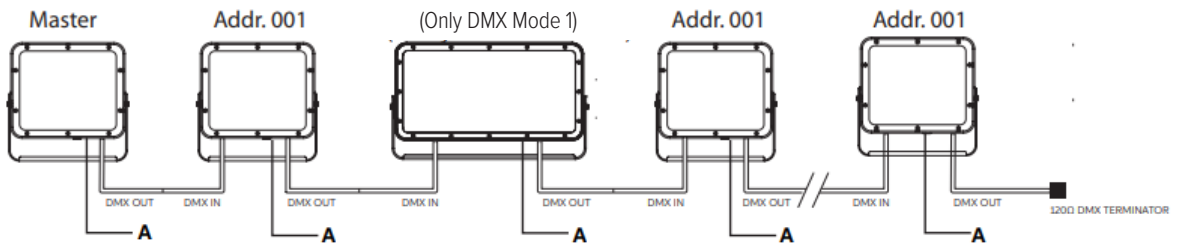
OPERATING MODES

DMX Mode



Example with fixtures set to 4 DMX channels

Master-Satellite/Automatic/Fixed Color Mode



WARNING ! in this mode, no DMX control device must be present along the line.

CUSTOMIZE YOUR **EX**PERIENCE.

At Experience Brands, we believe every space deserves unique lighting elements. We proudly specialize in crafting solutions that reflect your personal vision. Our expert team is here to collaborate with you to design and implement customized features that elevate your environment.

Ready to Get Started? Email us at: DesignServices@exp-brands.com