

DESCRIPTION

CAPITAL 200 blends unobtrusively into every architectural background through modern design and an extremely sleek profile. The floodlight delivers high output from a compact body with outstanding performance. Available in eight light distributions, this versatile luminaire delivers balanced projection and photometric flexibility tailored to the selective demands of the most sophisticated architectural needs.



Date: _____ Type: _____ Catalog Number: _____

Project Name: _____

ORDERING INFORMATION

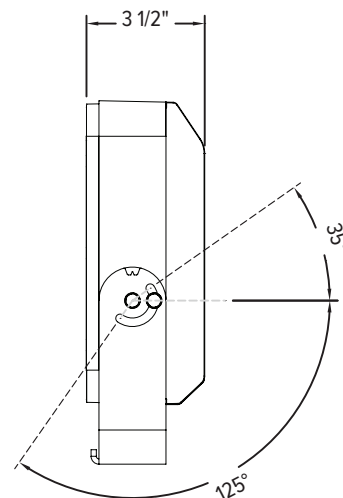
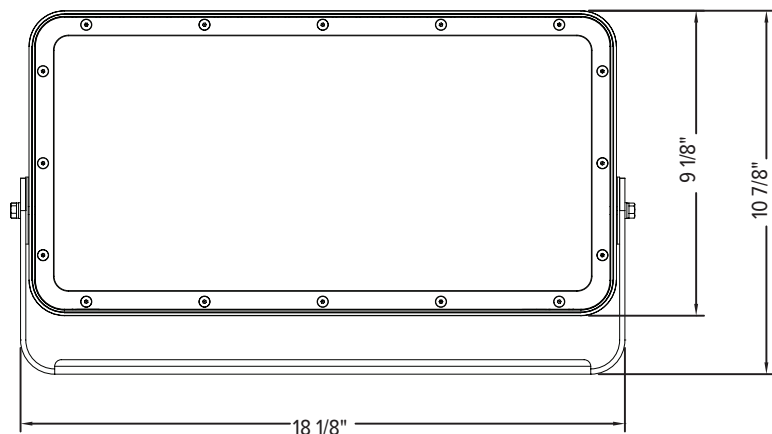
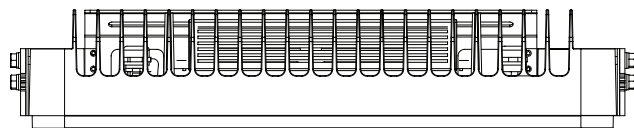
LUMINAIRE							
MODEL	CCT	CONTROL	CABLE	VOLTAGE	OPTIC *	FINISH	OPTION
CP200 Capital 200 Discrete	RGBW30K RGBW 3000K	DMX-RDM DMX/RDM	S Power in (7.9"), DMX in, DMX out (59")	UNV 120 - 277V	SP Spot 8°	AG Anthracite Grey	MG Marine Grade
CP200PE Capital 200 Discrete Polar Edition	RGBW40K RGBW 4000K		M Monocable without connectors (19.7")		NB Narrow 12°	BL Black	3G 3G Mounting Yoke
			C Monocable with connectors (19.7")		MB Medium 23°	SG Griven Silver Grey	LVR Internal Honeycomb Louver
					WB Wide 43°	WH White	
					EW Extra Wide 58°	CC Custom RAL Color	
					ELH Elliptical Horizontal 42° H x 10° V		
					ELWH Elliptical Wide Horizontal 39° H x 20° V		
					WW Wall Wash 36° H x 15° V		
					* Contact factory for other optical options.		

CAPITAL 200		
PHYSICAL	HOUSING	Die-cast Aluminum
	OVERALL DIMENSIONS	18.1" L x 3.5" W x 10.9" H
	WEIGHT	21 Pounds
	OPERATING TEMPERATURE	-40°C to 50°C (-40°F to 122°F)
ELECTRICAL	POWER CONSUMPTION	155 watts max
	AMPERAGE	1.29 A @ 120VAC 0.56 A @ 277VAC
	CONTROL	DMX-RDM Standalone Onboard Sequencing, or Master-Satellite Operation
	CABLE LENGHTS	Power in: 7.87 inches / DMX In & Out: 59.06 inches
PHOTOMETRIC	LED	RGBW (3000K or 4000K White)
	# LEDS	64
	DELIVERED LUMEN OUTPUT	Up to 9956 lumens
	EFFICACY	Up to 64 lumens per watt
	L70 LUMEN MAINTENANCE	L70 > 100,000 Hours @ 25°C
	# DISTRIBUTIONS	Eight
	LIGHT CONTROL ACCESSORIES	Visor, Snoot, Internal Honeycomb Louver (Available Separately)
LIGHT DISTRIBUTIONS*	DISTRIBUTION	BEAM ANGLE
	SPOT	8°
	NARROW	12°
	MEDIUM	23°
	WIDE	43°
	EXTRA WIDE	58°
	ELLIPTICAL HORIZONTAL	42° x 10°
	ELLIPTICAL WIDE HORIZONTAL	39° x 20°
	WALL WASH	36° x 15° (5° Incline)
CERTIFICATIONS	SAFETY	ETL Listed for Wet Locations
	INGRESS PROTECTION	IP67
	IMPACT RATING	IK10

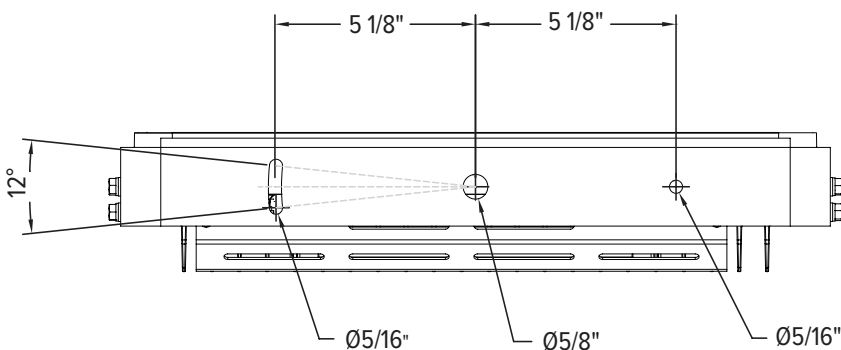
* LED life may vary under actual field conditions due to external factors. Lifetime estimates are generated from actual testing in a controlled environment. Values are conservatively derived from those numbers.

DIMENSIONS

All dimensions are shown in inches unless otherwise noted.



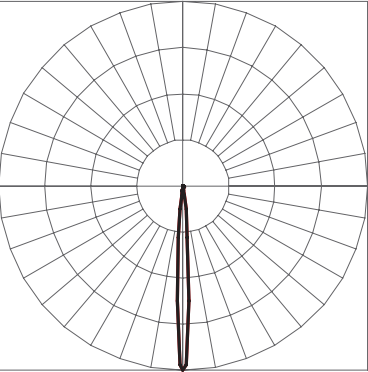
MOUNTING



PHOTOMETRICS - RGBW CANDELA DISTRIBUTION

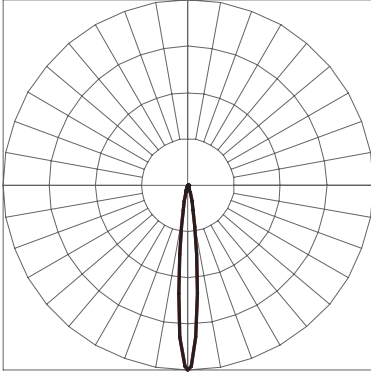
 HORIZONTAL
 VERTICAL

SPOT 8° (SP)



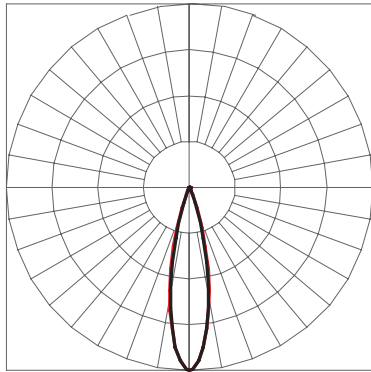
CBCP 265,875 / 8,815 LM

NARROW 12° (NB)



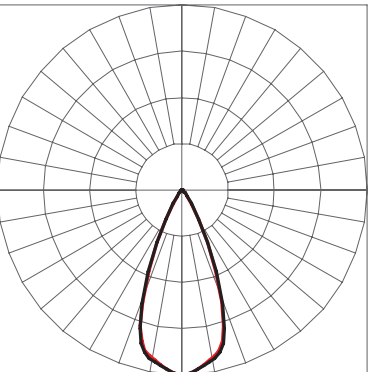
CBCP 117,812 / 7,839 LM

MEDIUM 23° (MB)



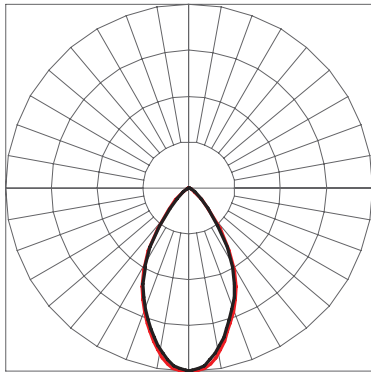
CBCP 40,527 / 7,531 LM

WIDE 44° (WB)



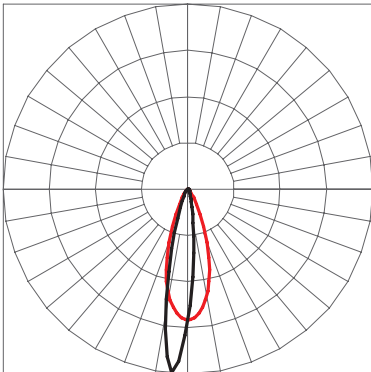
CBCP 13,454 / 7,385 LM

EXTRA WIDE 58° (EXWB)



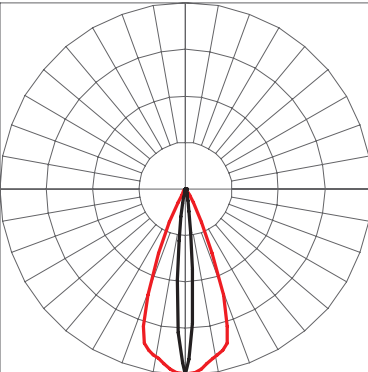
CBCP 6,245 / 5,979 LM

WALL WASH 36° x 15° (WW)



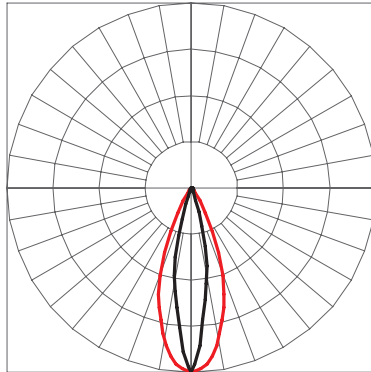
CBCP 26,794 / 6,211 LM

ELLIPTICAL 42° x 10° (ELLB)



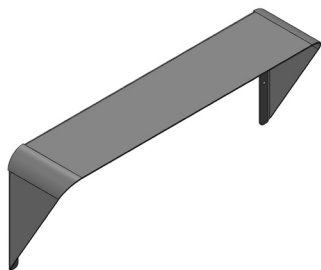
CBCP 48,213 / 7,228 LM

WIDE 39° x 20° (ELWB)

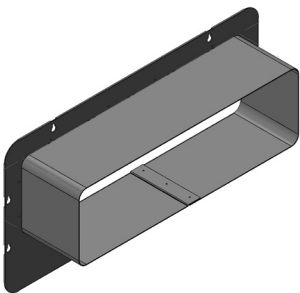


CBCP 23,787 / 6,782 LM

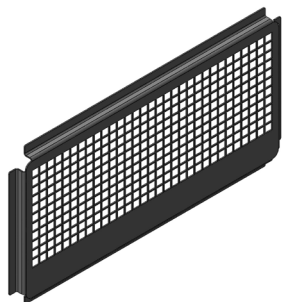
ACCESSORIES



AL8229
Visor



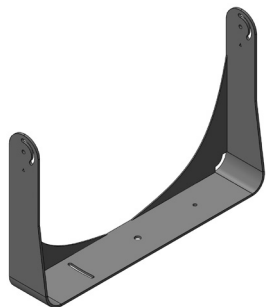
AL8230
Snoot



AL8231
Wire Guard



AL1321
Infrared Remote Control



AL8259
3G Mounting Yoke