

# CAPITAL 200

Static White



## DESCRIPTION

CAPITAL 200 blends unobtrusively into every architectural background through modern design and an extremely sleek profile. The floodlight delivers high output from a compact body with outstanding performance. Available in eight light distributions, this versatile luminaire delivers balanced projection and photometric flexibility tailored to the selective demands of the most sophisticated architectural needs.



Date: \_\_\_\_\_ Type: \_\_\_\_\_ Catalog Number: \_\_\_\_\_

Project Name: \_\_\_\_\_

## ORDERING INFORMATION

LUMINAIRE							
MODEL	CCT	CONTROL	CABLE	VOLTAGE	OPTIC *	FINISH	OPTION
CP200 Capital 200 Discrete	27K 2700K	DMX-RDM DMX/RDM	S Power in (7.9"), DMX in, DMX out (59")	UNV 120 - 277V	SP Spot 8°	AG Anthracite Grey	MG Marine Grade
CP200PE Capital 200 Discrete Polar Edition	30K 3000K		M Monocable without connectors (19.7")		NB Narrow 12°	BL Black	3G 3G Mounting Yoke
	40K 4000K		C Monocable with connectors (19.7")		MB Medium 23°	SG Griven Silver Grey	LVR Internal Honeycomb Louver
					WB Wide 43°	WH White	
					EW Extra Wide 58°	CC Custom RAL Color	
					ELH Elliptical Horizontal 42° H x 10° V		
					ELWH Elliptical Wide Horizontal 39° H x 20° V		
					WW Wall Wash 36° H x 15° V		

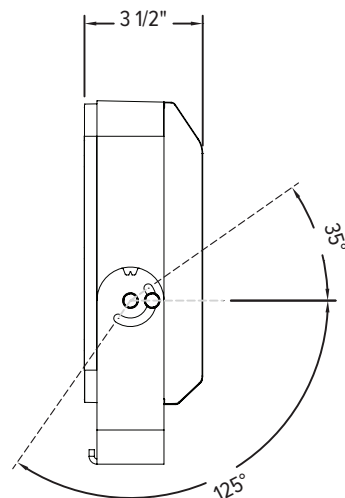
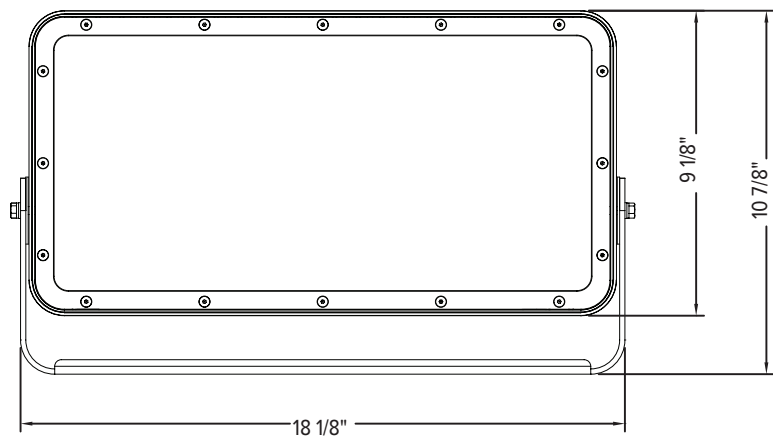
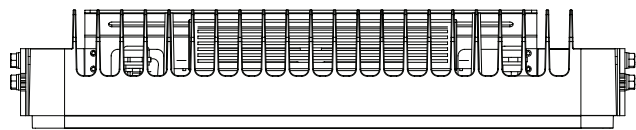
\* Contact factory for other optical options.

CAPITAL 200		
PHYSICAL	HOUSING	Die-cast Aluminum
	OVERALL DIMENSIONS	18.1" L x 3.5" W x 10.9" H
	WEIGHT	21 Pounds
	OPERATING TEMPERATURE	-40°C to 50°C (-40°F to 122°F)
ELECTRICAL	POWER CONSUMPTION	148 watts max
	AMPERAGE	1.23 A @ 120VAC 0.53 A @ 277VAC
	CONTROL	DMX-RDM Standalone Onboard Sequencing, or Master-Satellite Operation
	CABLE LENGTHS	Power in: 7.87 inches / DMX In & Out: 59.06 inches
PHOTOMETRIC	LED	Static White (2700K, 3000K, or 4000K)
	# LEDS	64
	DELIVERED LUMEN OUTPUT	Up to 16370 lumens
	EFFICACY	Up to 111 lumens per watt
	L70 LUMEN MAINTENANCE	L70 > 100,000 Hours @ 25°C
	# DISTRIBUTIONS	Eight
	LIGHT CONTROL ACCESSORIES	Visor, Snoot, Internal Honeycomb Louver (Available Separately)
LIGHT DISTRIBUTIONS*	DISTRIBUTION	BEAM ANGLE
	SPOT	8°
	NARROW	12°
	MEDIUM	23°
	WIDE	43°
	EXTRA WIDE	58°
	ELLIPTICAL HORIZONTAL	42° x 10°
	ELLIPTICAL WIDE HORIZONTAL	39° x 20°
	WALL WASH	36° x 15° (5° Incline)
CERTIFICATIONS	SAFETY	ETL Listed for Wet Locations
	INGRESS PROTECTION	IP67
	IMPACT RATING	IK09

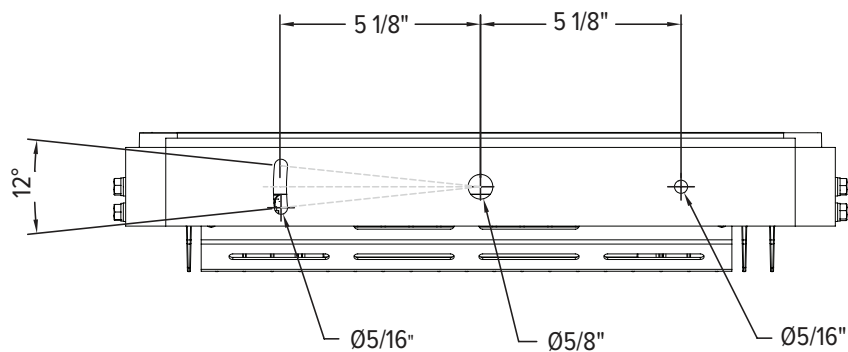
\* LED life may vary under actual field conditions due to external factors. Lifetime estimates are generated from actual testing in a controlled environment. Values are conservatively derived from those numbers.

DIMENSIONS

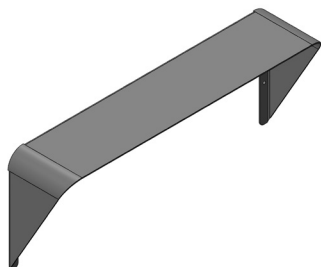
All dimensions are shown in inches unless otherwise noted.



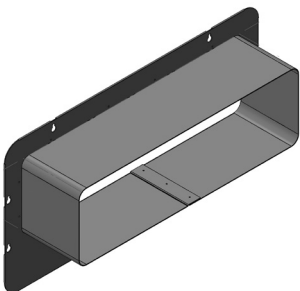
MOUNTING



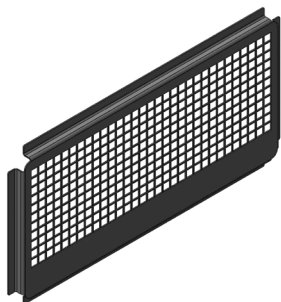
ACCESSORIES



**AL8229**  
Visor



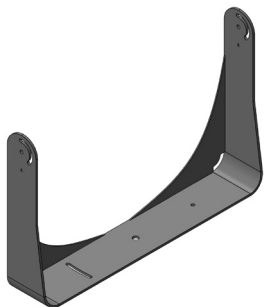
**AL8230**  
Snoot



**AL8231**  
Wire Guard



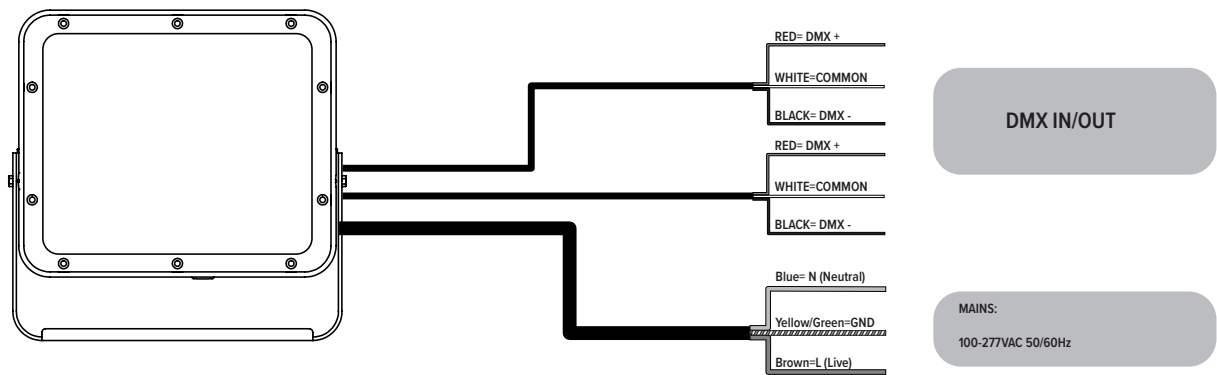
**AL1321**  
Infrared Remote Control



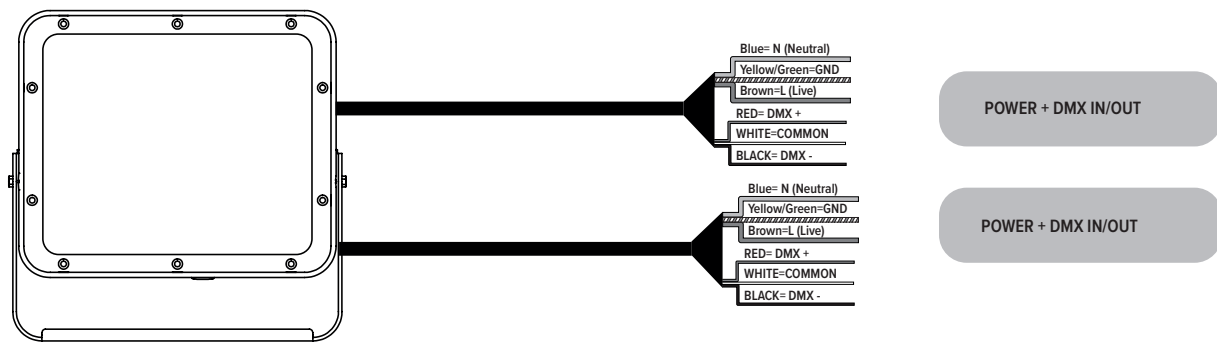
**AL8259**  
3G Mounting Yoke

Connection

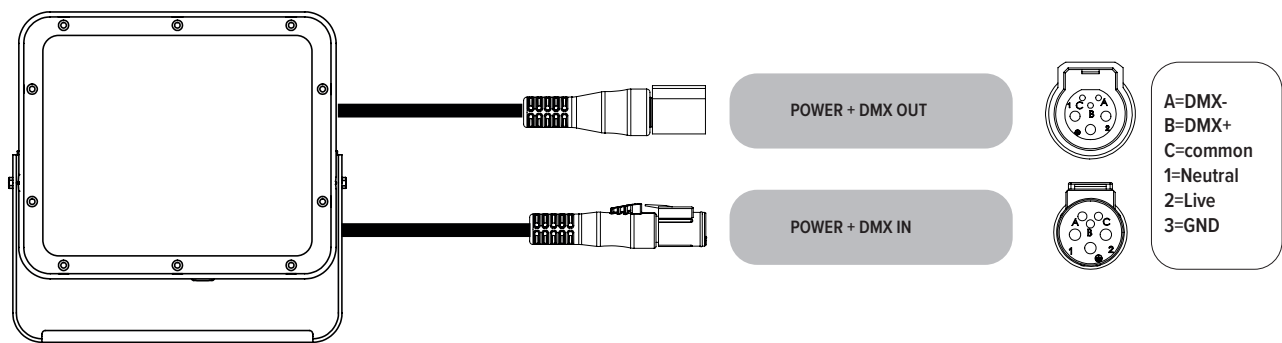
“S” type cable ( Power in, DMX In, DMX Out )



“M” type cable ( Monocable without connectors )



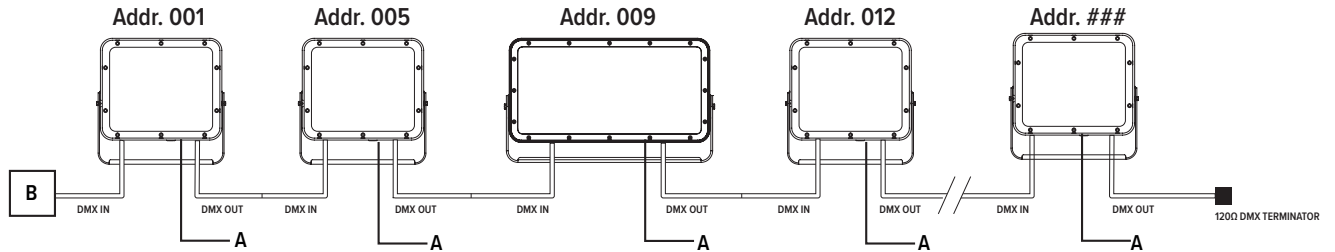
“C” type cable ( Monocable + connectors )



Note: the power and signal connections of S and M cable types can be carried out by using the connection kit included in the packing box. Follow the instructions provided along with the connection kit.

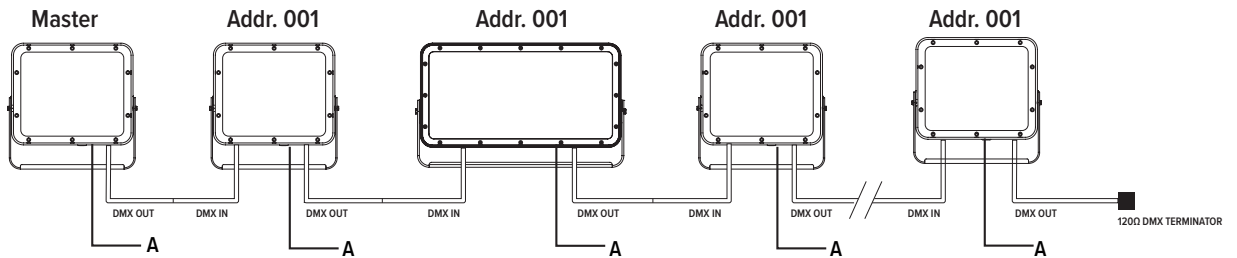
## Operating modes

### DMX Mode



Example with fixtures set to 4 DMX channels

### Master-Slave / Automatic / Fixed color Mode ( Only DMX Mode #1 )



**WARNING !** in this mode, no DMX control device must be present along the line.