

# CAPITAL 200 US

Static White



## DESCRIPTION

CAPITAL 200 US accentuates the designer's palette with an ultra-narrow 4° beam using 40 high-power LEDs fitted with precision optics. Grazing of vertical columnar features or illumination of objects at distance both benefit from the high-performance of this luminaire.



Date: \_\_\_\_\_ Type: \_\_\_\_\_ Catalog Number: \_\_\_\_\_

Project Name: \_\_\_\_\_

## ORDERING INFORMATION

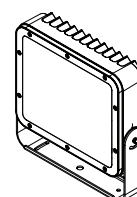
LUMINAIRE							
MODEL	CCT	CONTROL	CABLE	VOLTAGE	OPTIC *	FINISH	OPTION
CP200US Capital 200 Ultra-Spot	27K 2700K	DMX-RDM DMX-RDM	S Power in (7.9"), DMX in, DMX out (59")	UNV 120 - 277V	US Ultra Spot 4°	AG Anthracite Grey	MG Marine Grade
CP200USPE Capital 200 Ultra-Spot Polar Edition	30K 3000K		M Monocable without connectors (19.7")			BL Black	3G 3G Mounting Yoke
	40K 4000K		C Monocable with connectors (19.7")			SG Griven Silver Grey	
						WH White	
						CC Custom RAL Color	

# CAPITAL 200 US

Static White

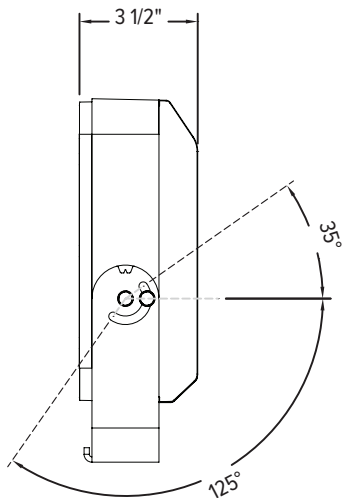
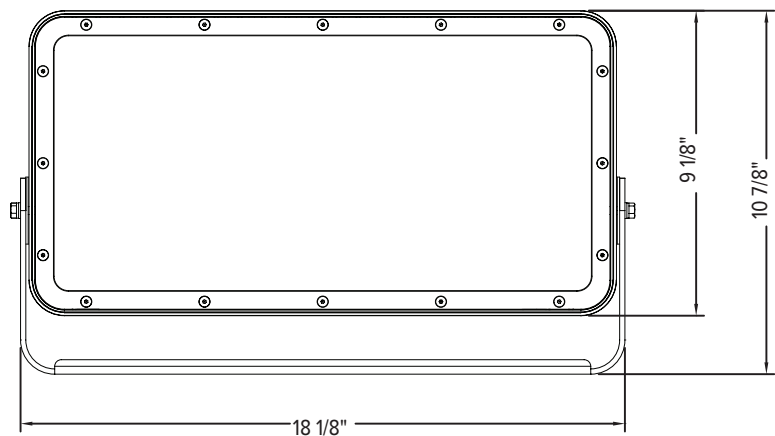
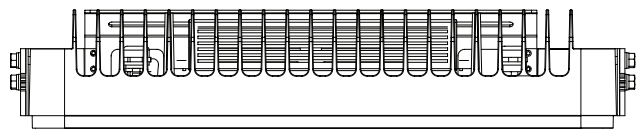


CAPITAL 200 US				
PHYSICAL	HOUSING	Die-cast Aluminum		
	HOUSING DIMENSIONS	18.7" W x 8.9" H x ø3.5"		
	OVERALL DIMENSIONS	18.7" W x 10.9" H x ø3.5"		
	WEIGHT	21 lbs		
	EPA	1.33 ft²		
	OPERATING TEMPERATURE	-40°C to 50°C (-40°F to 122°F)		
ELECTRICAL	POWER CONSUMPTION	102 watts max		
	AMPERAGE	0.9 A @ 120VAC 0.4 A @ 277VAC		
	CONTROL	DMX-RDM. Includes onboard standalone sequencing or master-satellite operation without DMX control systems when programmed with infra-red configuration remote (Ordering code AL1321)		
	MODES	- Intensity (1 channel)                      - Stand-Alone Dimmer		
PHOTOMETRIC	LED	Static White (2700K, 3000K or 4000K)		
	# LEDS	40 high power LEDs		
	DELIVERED LUMEN OUTPUT	7936 lumens		
	EFFICACY	Up to 77 lumens per watt		
	L70 LUMEN MAINTENANCE	100,000 Hours @ 25°C		
	# DISTRIBUTIONS	One		
	LIGHT CONTROL ACCESSORIES	Visor, Snoot, Spreading Diffusers (Contact Factory)		
LIGHT DISTRIBUTIONS*	DISTRIBUTION	BEAM ANGLE	LUMENS	MAX CANDELA
	ULTRA SPOT	4°	7936	1,079,673
CERTIFICATIONS	SAFETY	ETL Listed for Wet Locations		
	INGRESS PROTECTION	IP67		
	IMPACT RATING	IK09		
	EUROPEAN	RoHS		

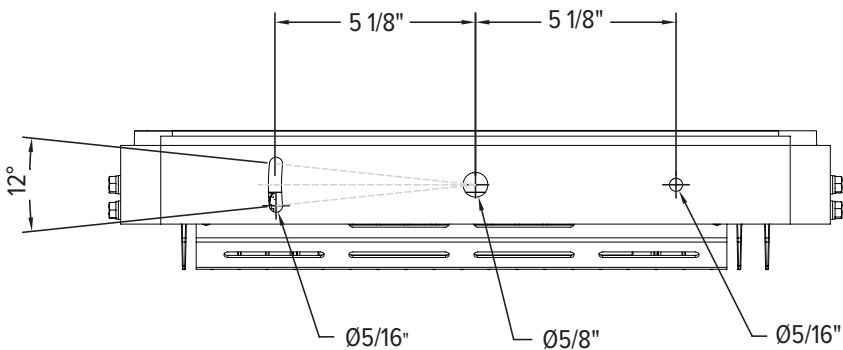


DIMENSIONS

All dimensions are shown in inches unless otherwise noted.



MOUNTING

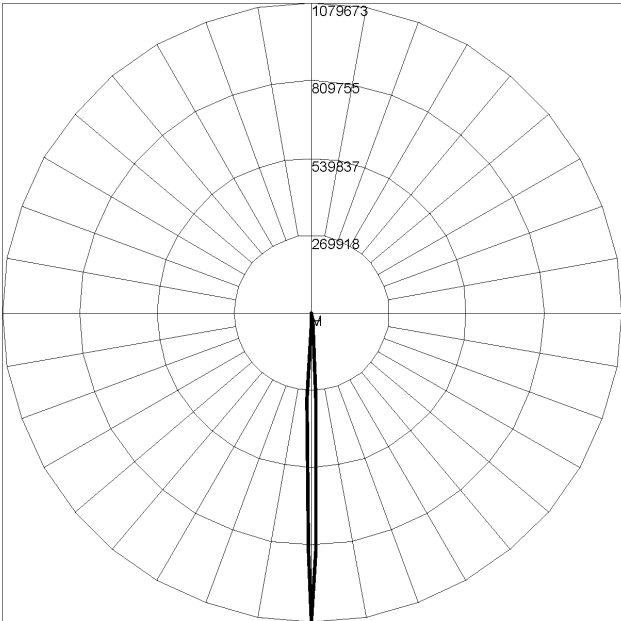


PHOTOMETRICS - STATIC WHITE CANDELA DISTRIBUTION

HORIZONTAL  
VERTICAL

ULTRA SPOT 4° - Warm White 3000K

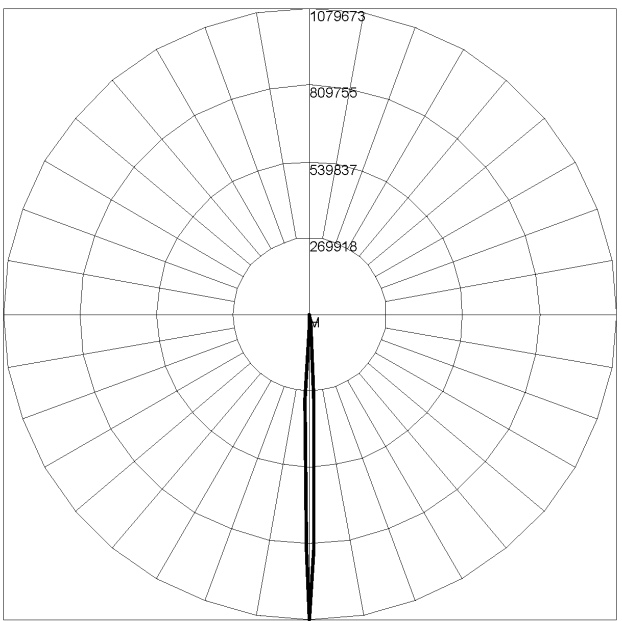
Maximum Candela = 1079673 / 7936 lms



Maximum Candela = 1079673.11 Located At Horizontal Angle = 0, Vertical Angle = 0  
H - Horizontal Axial Candela  
V - Vertical Axial Candela

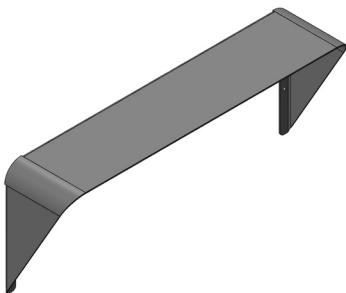
ULTRA SPOT 4° - Neutral White 4000K

Maximum Candela = 1079673 / 7936 lms

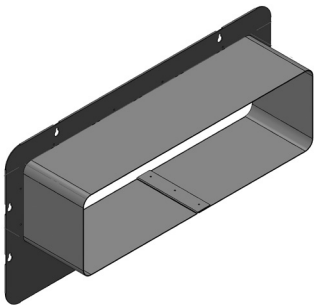


Maximum Candela = 1079673.11 Located At Horizontal Angle = 0, Vertical Angle = 0  
H - Horizontal Axial Candela  
V - Vertical Axial Candela

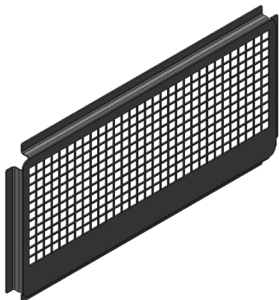
ACCESSORIES



**AL8229- XX\***  
Visor



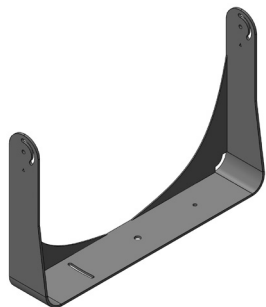
**AL8230- XX\***  
Snoot



**AL8231- XX\***  
Wire Guard



**AL1321**  
Infrared Configuration Remote



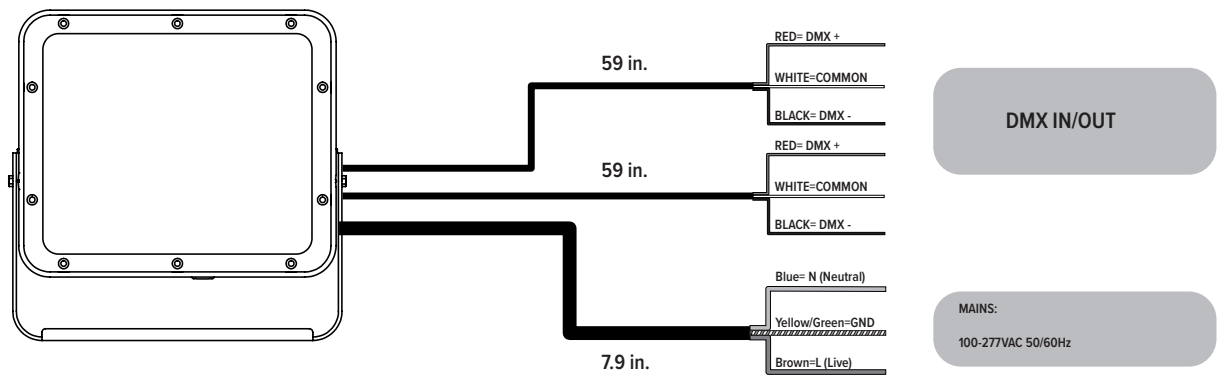
**AL8259- XX\***  
3G Mounting Yoke

**XX\*- ACCESSORY FINISHES**

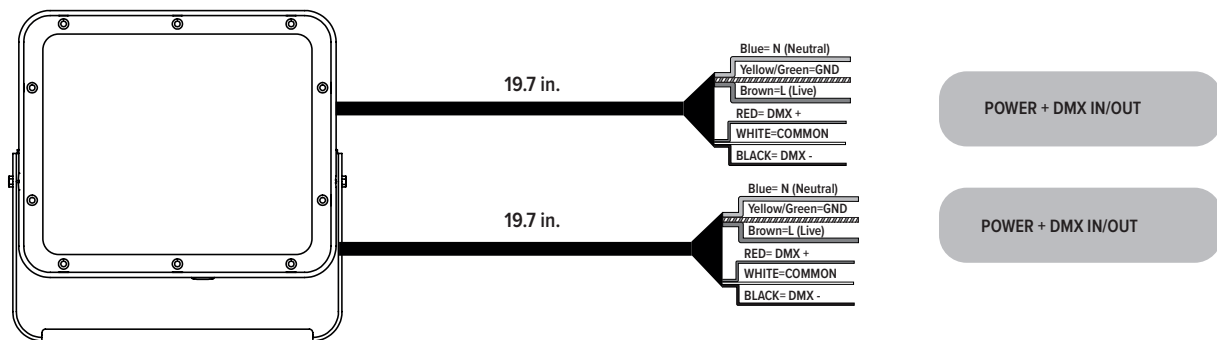
AG	Anthracite Grey
BL	Black
SG	Griven Silver Grey
WH	White
CC	Custom Color

Connection

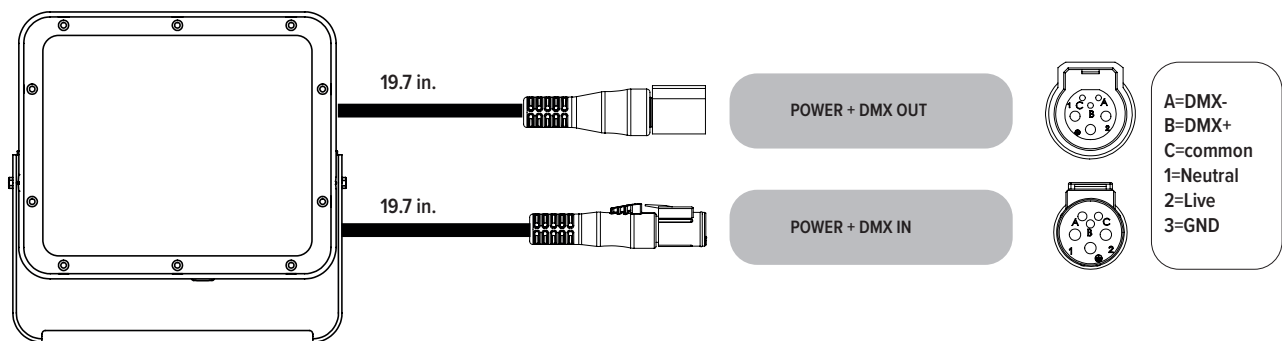
“S” type cable ( Power in, DMX In, DMX Out )



“M” type cable ( Monocable without connectors )



“C” type cable ( Monocable + connectors )

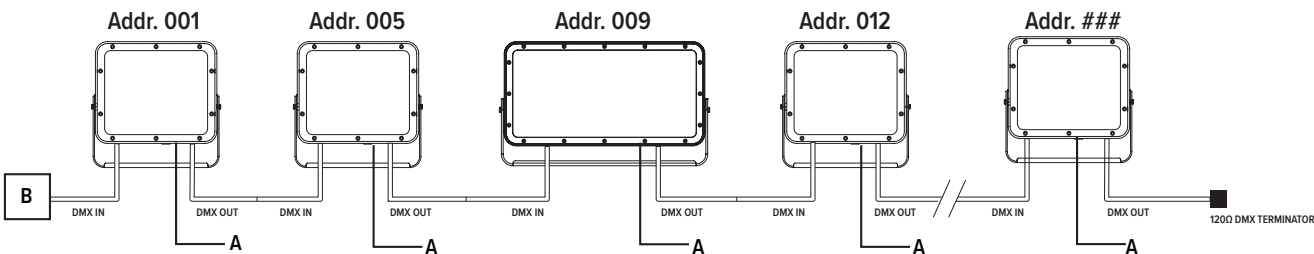


Note: the power and signal connections of S and M cable types can be carried out by using the connection kit included in the packing box. Follow the instructions provided along with the connection kit.

"X" type cable- Contact Factory

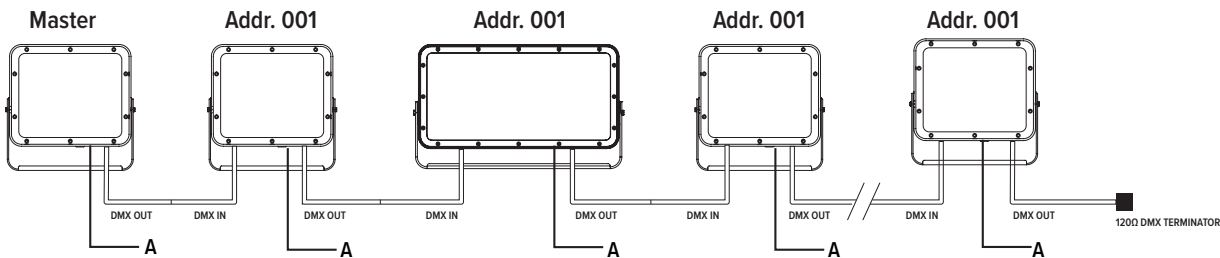
Operating modes

DMX Mode



Example with fixtures set to 4 DMX channels

Master-Slave / Automatic ( Only DMX Mode #1 )



**WARNING !** in this mode, no DMX control device must be present along the line.