

CAPITAL 200 MC

RGBW



DESCRIPTION

CAPITAL 200 MC delivers superior color-mixing through quad-chip LEDs and precision lens technology within a strikingly compact body. Tailored to meet the needs of demanding architectural lighting specifications, this flexible and highly versatile floodlight is suitable for a variety of installations where a reduced mounting footprint is desired.



Date: _____ Type: _____ Catalog Number: _____

Project Name: _____

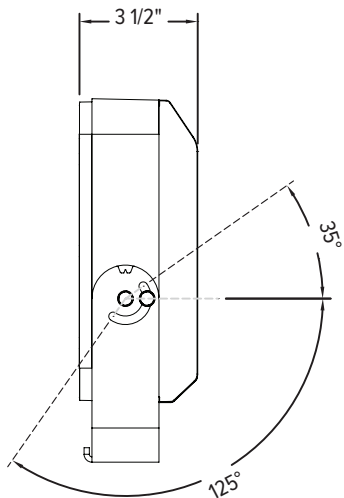
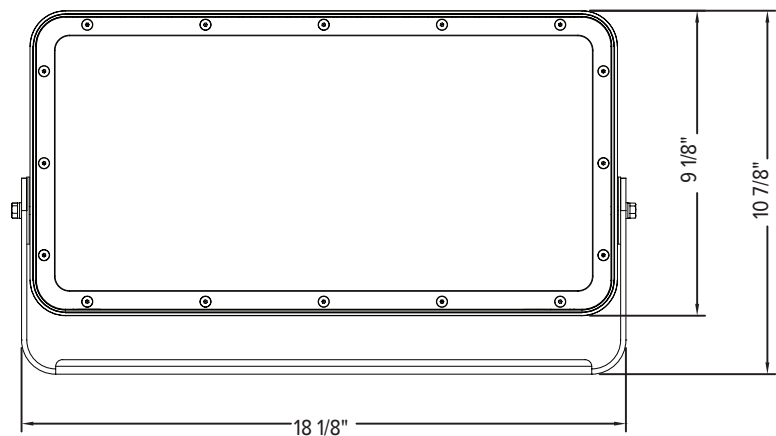
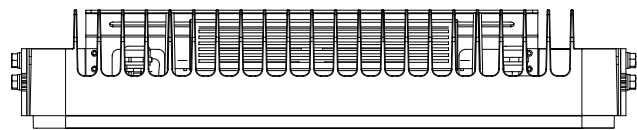
ORDERING INFORMATION

LUMINAIRE							
MODEL	CCT	CONTROL	CABLE	VOLTAGE	OPTIC *	FINISH	OPTION
CP200MC Capital 200 MC	RGBW30K RGBW 3000K	DMX-RDM DMX-RDM	S Power in (7.9"), DMX in, DMX out (59")	UNV 120 - 277V	SP Spot 7°	AG Anthracite Grey	MG Marine Grade
CP200MCPE Capital 200 MC Polar Edition	RGBW40K RGBW 4000K		M Monocable without connectors (19.7")		NB Narrow 10°	BL Black	3G 3G Mounting Yoke
			C Monocable with connectors (19.7")		MB Medium 23°	SG Griven Silver Grey	
					WB Wide 35°	WH White	
			* Contact factory for other optical options.				

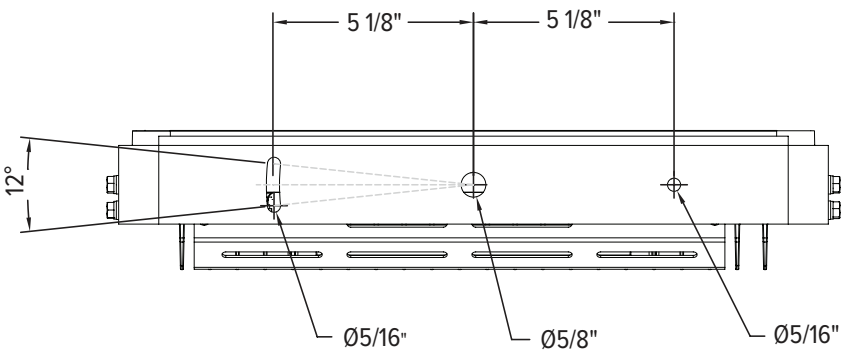
		CAPITAL 200 MC		
PHYSICAL	HOUSING	Die-cast Aluminum		
	HOUSING DIMENSIONS	18-1⁄8" W x 9-1⁄8" H x ø3-1⁄2"		
	OVERALL DIMENSIONS	18-1⁄8" W x 10-7⁄8" H x ø3-1⁄2"		
	WEIGHT	26 lbs		
	EPA	1.33 ft²		
	OPERATING TEMPERATURE	-40°C to 50°C (-40°F to 122°F)		
ELECTRICAL	POWER CONSUMPTION	159 watts max		
	AMPERAGE	1.33A @ 120V or 0.57A @ 277V		
	CONTROL	DMX/RDM Includes onboard standalone sequencing or master-satellite operation without DMX control systems when programmed with infra-red configuration remote (Ordering code AL1321)		
	CABLE LENGTHS	Power in: 7.87 inches / DMX In & Out: 59.06 inches		
	MODES	- RGBW (4 channels)	- 16-Bit Mode (8 channels)	- Master Satellite Mode
		- RGBW + Intensity (5 channels)	- RGBW Calibrated White (4 channels)	
-RGBW + Intensity + Strobe (6 channels) - Fixed Color				
PHOTOMETRIC	LED	RGBW (3000K or 4000K White)		
	# LEDS	16 quad-chip LEDs		
	DELIVERED LUMEN OUTPUT	6203 to 6876 lumens		
	EFFICACY	Up to 43 lumens per watt		
	L70 LUMEN MAINTENANCE	100,000 Hours @ 25°C		
	# DISTRIBUTIONS	Four		
	LIGHT CONTROL ACCESSORIES	Visor, Snoot, Wire Guard, Spreading Diffusers (Contact Factory)		
LIGHT DISTRIBUTIONS*	DISTRIBUTION	BEAM ANGLE	LUMENS	MAX CANDELA
	SPOT	7°	6876	279,760
	NARROW	10°	6694	150,820
	MEDIUM	23°	6397	34,595
	WIDE	35°	6203	16,441
CERTIFICATIONS	SAFETY	ETL Listed for Wet Locations		
	INGRESS PROTECTION	IP67		
	IMPACT RATING	IK09		
	EUROPEAN	RoHS		

DIMENSIONS

All dimensions are shown in inches unless otherwise noted.



MOUNTING

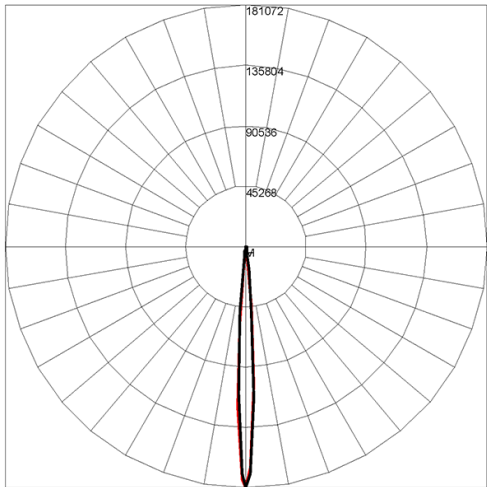


PHOTOMETRICS - DYNAMIC WHITE CANDELA DISTRIBUTION

HORIZONTAL
VERTICAL

SPOT 7°

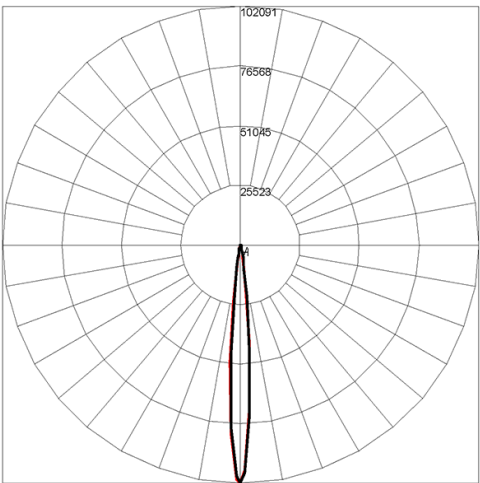
Maximum Candela = 279760 / 6876 lms



Maximum Candela = 181071.516 Located At Horizontal Angle = 0, Vertical Angle = 0
H - Horizontal Axial Candela
V - Vertical Axial Candela

NARROW 10°

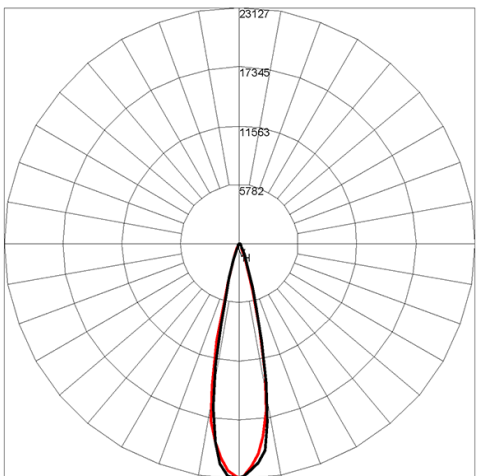
Maximum Candela = 150820 / 6694 lms



Maximum Candela = 102090.672 Located At Horizontal Angle = 0, Vertical Angle = 0
H - Horizontal Axial Candela
V - Vertical Axial Candela

MEDIUM 23°

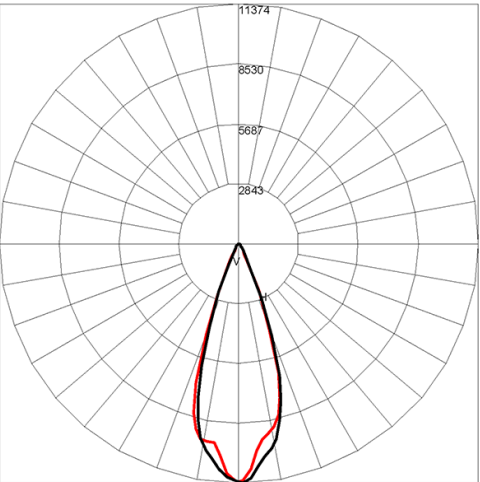
Maximum Candela = 34595 / 6397 lms



Maximum Candela = 23126.968 Located At Horizontal Angle = -1, Vertical Angle = -1
H - Horizontal Axial Candela
V - Vertical Axial Candela

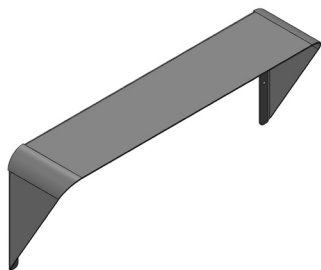
WIDE 35°

Maximum Candela = 16441 / 6203 lms

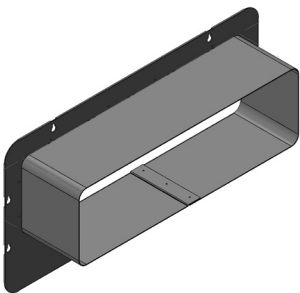


Maximum Candela = 11373.87 Located At Horizontal Angle = 0, Vertical Angle = 1
H - Horizontal Axial Candela
V - Vertical Axial Candela

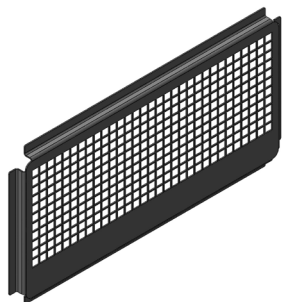
ACCESSORIES



AL8229-XX*
Visor



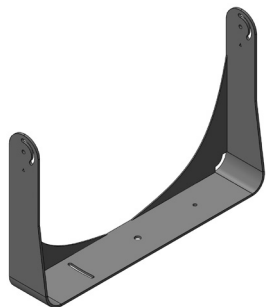
AL8230-XX*
Snoot



AL8231-XX*
Wire Guard



AL1321
Infrared Configuration Remote



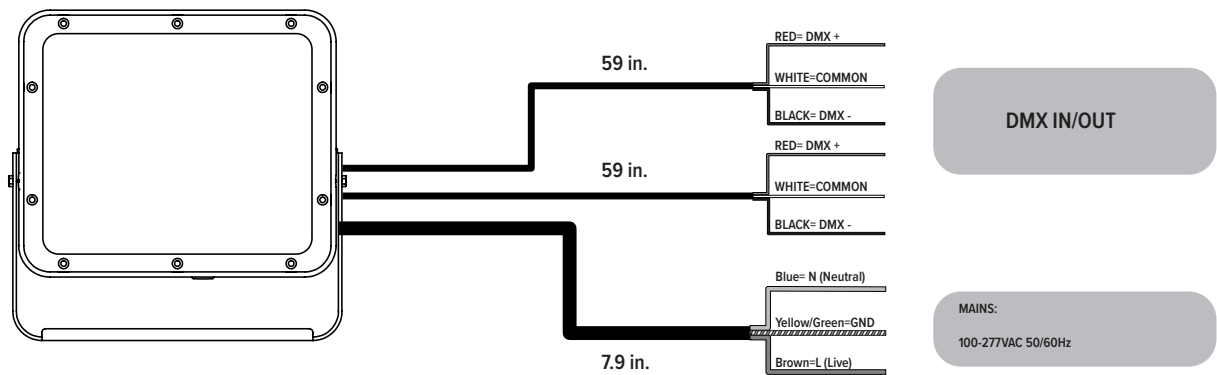
AL8259-XX*
3G Mounting Yoke

XX*- ACCESSORY FINISHES

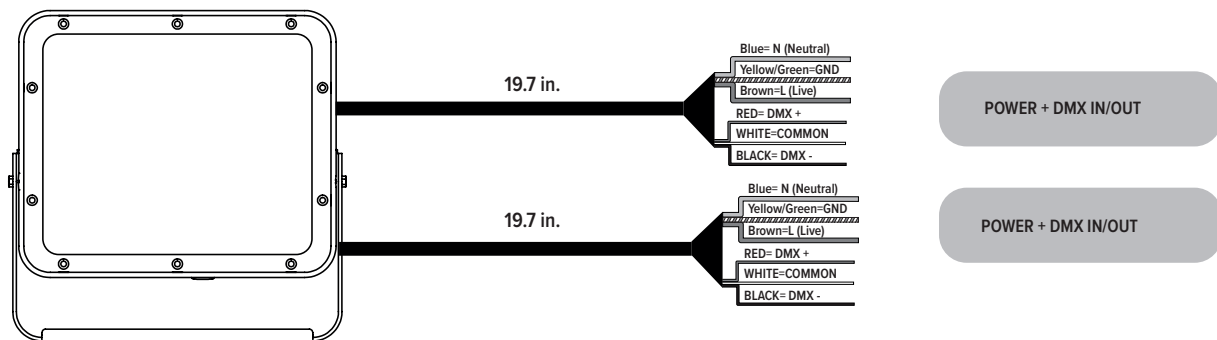
AG	Anthracite Grey
BL	Black
SG	Griven Silver Grey
WH	White
CC	Custom Color

Connection

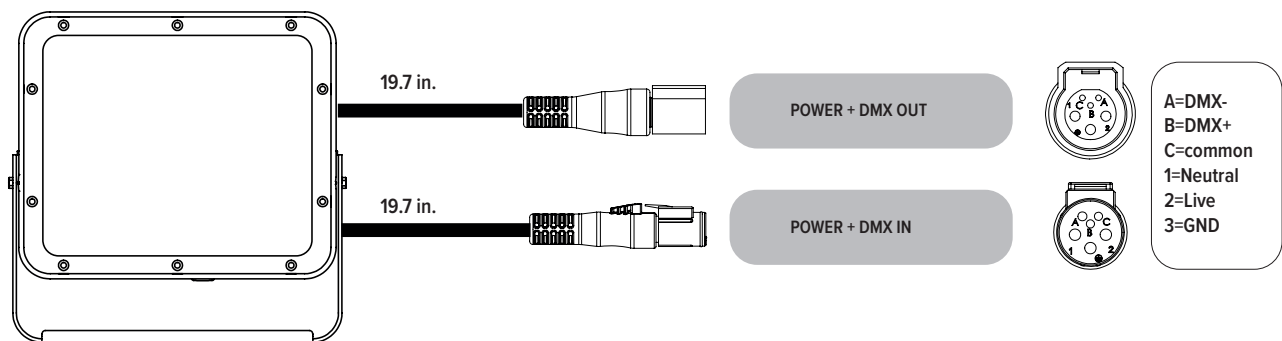
“S” type cable (Power in, DMX In, DMX Out)



“M” type cable (Monocable without connectors)



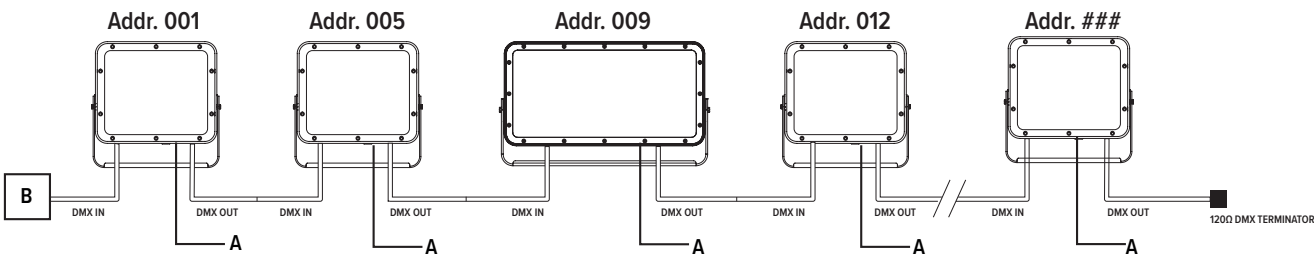
“C” type cable (Monocable + connectors)



Note: the power and signal connections of S and M cable types can be carried out by using the connection kit included in the packing box. Follow the instructions provided along with the connection kit.

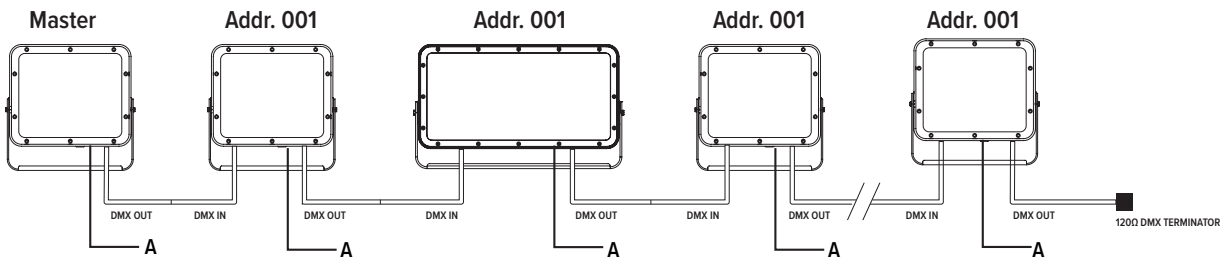
Operating modes

DMX Mode



Example with fixtures set to 4 DMX channels

Master-Slave / Automatic / Fixed color Mode (Only DMX Mode #1)



WARNING ! in this mode, no DMX control device must be present along the line.