

DESCRIPTION

CAPITAL 600 floodlight is available with a vast choice of combinable optics and color configurations for the maximum lighting design flexibility. Featuring full independent control of each LED luminaire, this twin cluster luminaire system allows absolute freedom in a minimal footprint to create impressive matching or divergent dynamic effects on large-scale façades and architectural elements from a long distance with surprising luminous output.



Date: _____ Type: _____ Catalog Number: _____

Project Name: _____

ORDERING INFORMATION

LUMINAIRE								
MODEL	CCT	CONTROL	CABLE	VOLTAGE	UPPER OPTIC	LOWER OPTIC	FINISH	OPTION
CP600 Capital 600	27K 2700K	DMX-RDM DMX/RDM	S Power in (7.9"), DMX in, DMX out (59")	UNV 120 - 277V	SP Spot 13°	SP Spot 13°	AG Anthracite Grey	AST Anti Saline Treatment
CP600PE Capital 600 Polar Edition	30K 3000K		M Monocable without Connectors (19.7")		NB Narrow 16°	NB Narrow 16°	BL Black	3G 3G Mounting Yoke
	40K 4000K		C Monocable with Connectors (19.7")		MB Medium 25°	MB Medium 25°	SG Griven Silver Grey	LVR Internal Honey-comb Louver
			WB Wide 46°		WB Wide 46°	WH White		
			EW Extra Wide 64°		EW Extra Wide 64°	CC Custom RAL Color		
			ELH Elliptical Horizontal 40° x 14°		ELH Elliptical Horizontal 40° x 14°			
			ELWH Elliptical Wide Horizontal 38° x 23°		ELWH Elliptical Wide Horizontal 38° x 23°			
					WW Wall Wash 36° x 19°	WW Wall Wash 36° x 19°		

Custom options are available; consult factory via phone at (864) 487-3535 ext. 258 or via email at DesignServices@EXP-Brands.com.

See Page 5 for ordering information of available accessories.



CAPITAL 600		
PHYSICAL	HOUSING	Die-Cast Aluminum
	OVERALL DIMENSIONS	20.4" L x 5.9" W x 29.8" H
	EPA	1.27 ft²
	WEIGHT	72.3 Pounds
	OPERATING TEMPERATURE	-40°F to 122°F (-40°C to 50°C)
	DRIVER LOCATION	Integral

ELECTRICAL	POWER	570 Watts (285 Watts per Luminaire)		
	POWER SUPPLY	100 to 277VAC; 50-60Hz		
	CURRENT	4.75 Amps at 120 Volts (570 Watts) 2.05 Amps at 277 Volts (570 Watts)		
	CONTROL	DMX-RDM, Standalone, Master-Satellite Operation		
	CABLE	S Cable	M Cable	C Cable
		Power In, DMX In, DMX Out Cables	6-Polarity In and Out Power/Data Monocable Without Connectors	6-Polarity In and Out Power/Data Monocable With Connectors
	CABLE LENGTH	59"	19.7"	19.7"

PHOTOMETRIC	LED	Static White 2700K, 3000K, or 4000K		
	NUMBER OF LEDS	192		
	DELIVERED LUMEN OUTPUT	up to 55,628 lumens (27,814 lumens per luminaire)		
	EFFICACY	up to 98 lumens per watt		
	LUMEN MAINTENANCE	L70 > 100,000 Hours at 77°F*		
	LIGHT CONTROL ACCESSORIES	Snoot, Visor, Internal Honeycomb Louver Available		

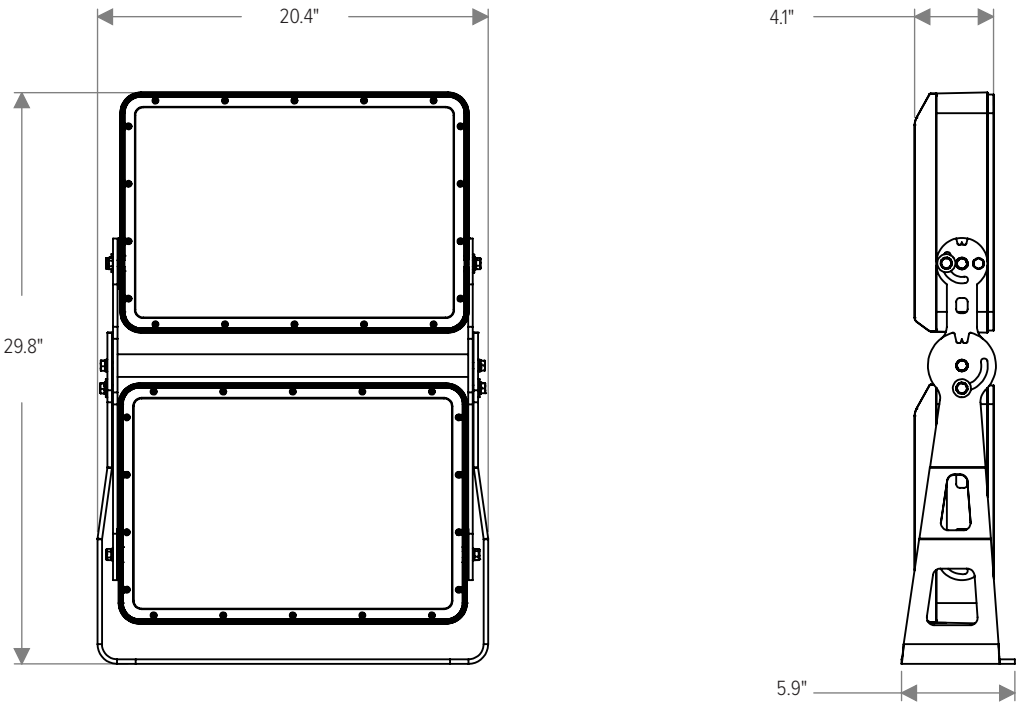
LIGHT DISTRIBUTIONS	DISTRIBUTION	BEAM ANGLE	2700K & 3000K		4000K	
			DELIVERED LUMENS	EFFICACY	DELIVERED LUMENS	EFFICACY
NOTE: Lumen values shown are for single luminaire head. Multiply by 2 to obtain values for dual luminaire heads.	Spot	13°	25828	91	27814	98
	Narrow	16°	23734	83	25560	90
	Medium	25°	23661	83	25481	89
	Wide	46°	23892	84	25729	90
	Extra Wide	64°	25194	88	25194	88
	Elliptical Horizontal	40° H x 14° V	23331	82	25125	88
	Elliptical Wide Horizontal	38° H x 23° V	21218	74	22850	80
	Wall Wash	36° H x 19° V with 5° Incline	19887	70	19887	70

CERTIFICATIONS	SAFETY	ETL Certified for Wet Locations		
	INGRESS PROTECTION	IP67		
	IMPACT RATING	IK09		
	WARRANTY	Limited Five Year Warranty		

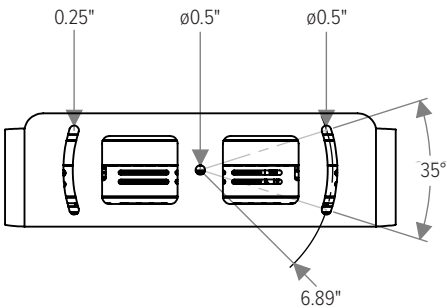
* LED life may vary under actual field conditions due to external factors. Lifetime estimates are generated from actual testing in a controlled environment. Values are conservatively derived from those numbers.

DIMENSIONS

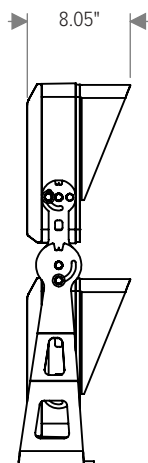
All dimensions are shown in inches unless otherwise noted.



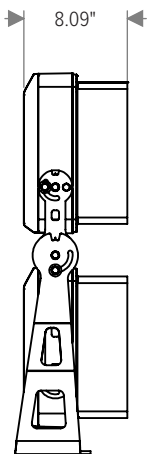
MOUNTING



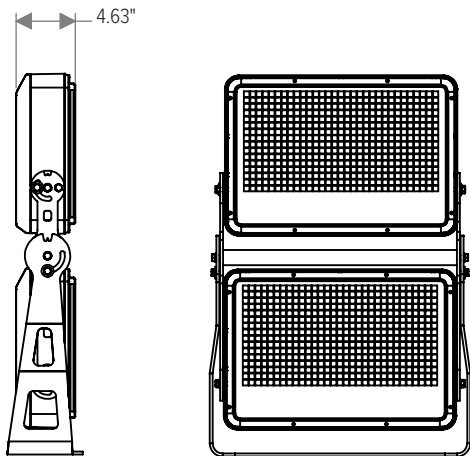
ACCESSORY DIMENSIONS



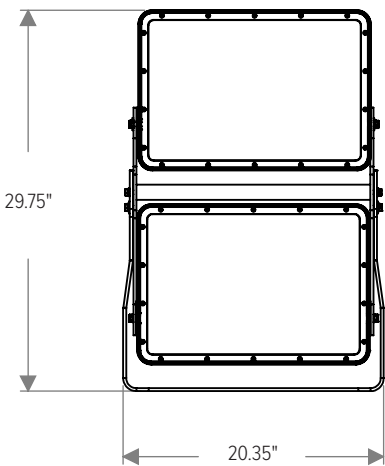
With Visor (CP300-VISOR-XX)



With Snoot (CP300-SNOOT-XX)



With Wire Guard (CP300-WIREGUARD-XX)



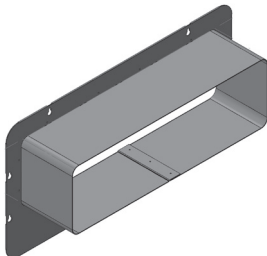
With 3G Mounting Yoke
(Factory Installed, Ordered with Luminaire)

ACCESSORIES

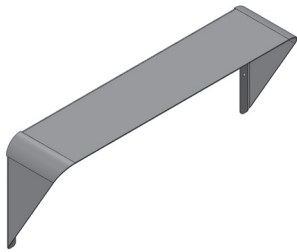
NOTE: Accessories are ordered and shipped separately from luminaire for field installation.
Accessories shown are sold individually for single luminaire heads. Two units must be ordered if dual head application is required.
-XX* indicates a painted accessory. See bottom of page for painted accessory ordering information.



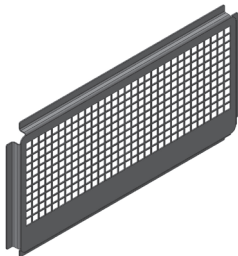
IR-CONFIG-REMOTE
Infrared Configuration Remote



CP300-SNOOT-XX*
Snoot



CP300-VISOR-XX*
Visor



CP300-WIREGUARD-XX*
Wire Guard

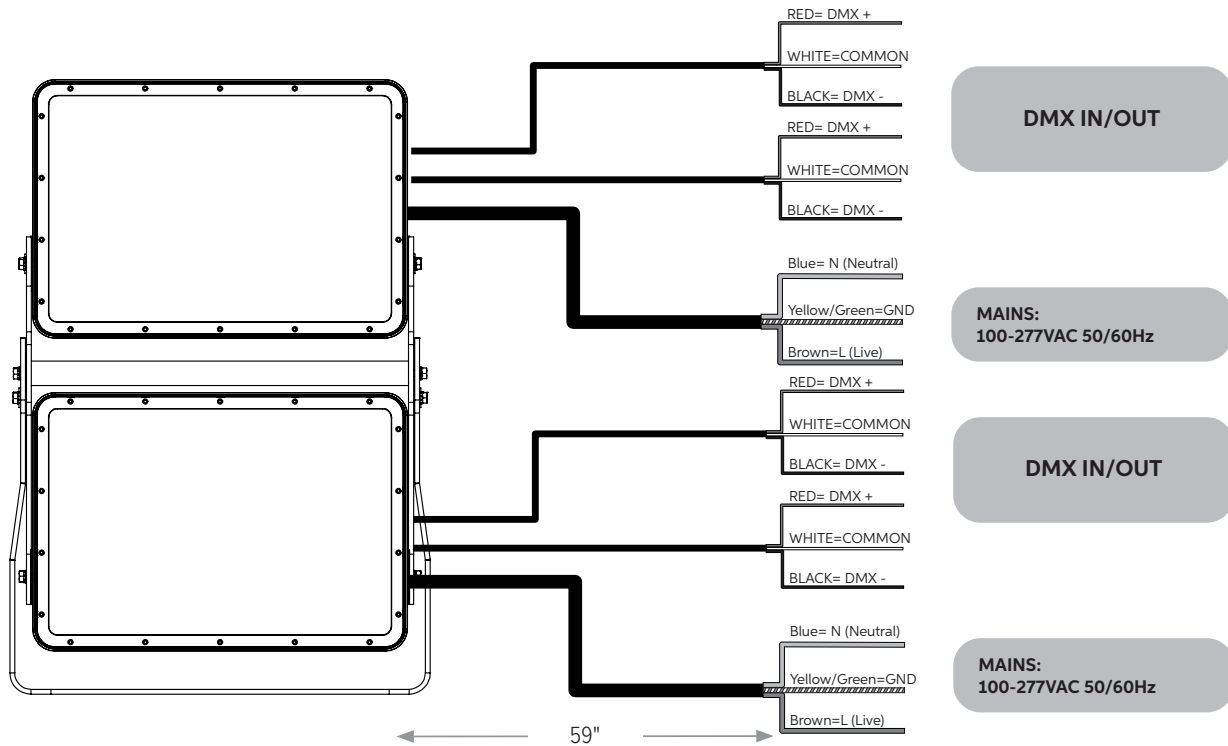
ORDERING INFORMATION

PAINTED ACCESSORIES					
MODEL		FINISH (*-XX)		OPTION	
CP300-SNOOT	Snoot	AG	Anthracite Grey	AST	Anti-Saline Treatment
CP300-VISOR	Visor	BL	Black		
CP300-WIREGUARD	Wire Guard	SG	Griven Silver Grey		
		WH	White		
		CC	Custom RAL Color		

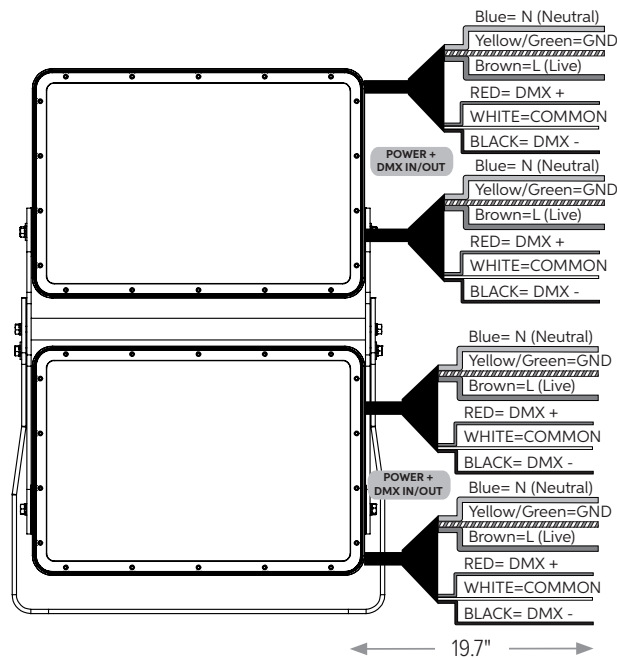
Accessories shown are sold individually for single luminaire heads. Two units must be ordered if dual head application is required.

CONNECTIONS

"S" Type Cable (Power In, DMX In, DMX Out)

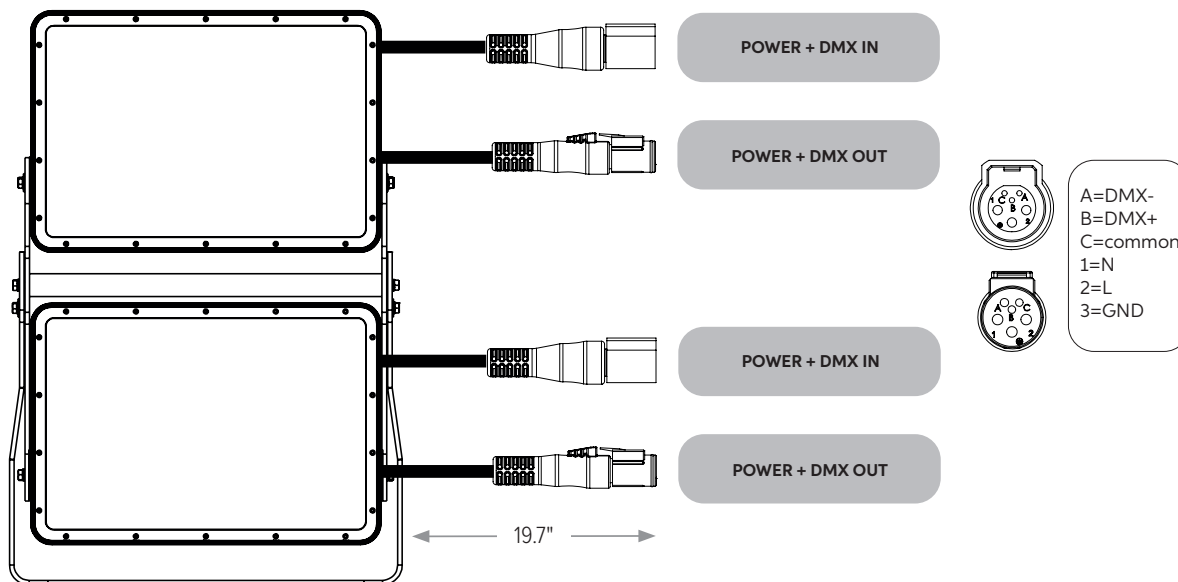


"M" Type Cable (Monocable Without Connectors)



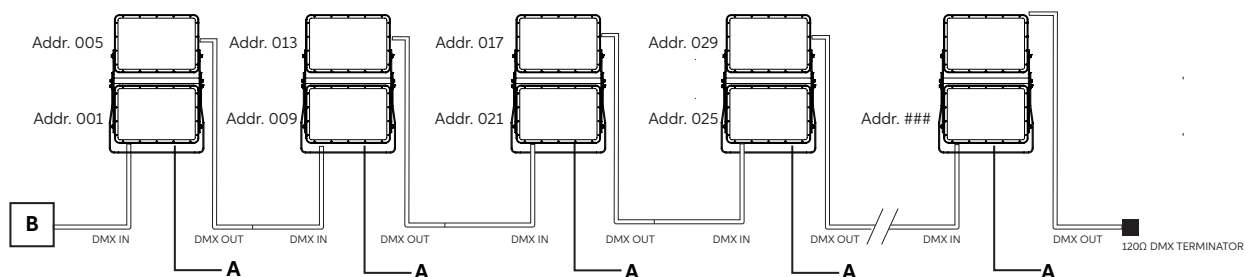
CONNECTIONS

"C" Type Cable (Monocable With Connectors)



OPERATING MODES

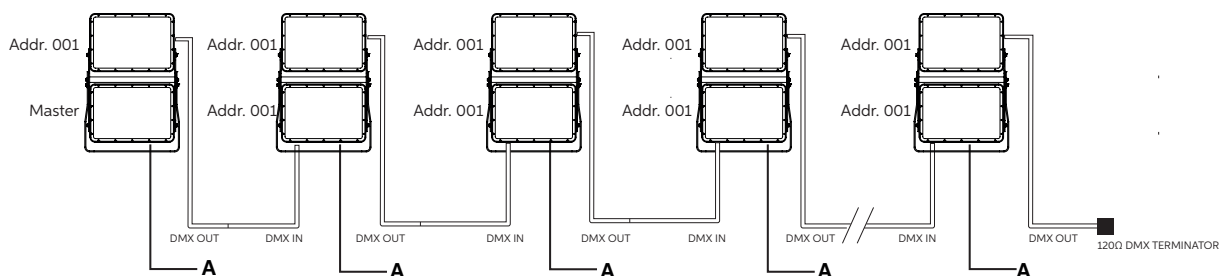
DMX Mode



Example with fixtures set to 4 DMX channels

Master-Satellite/Automatic/Fixed Color Mode

(Only DMX Mode #1)



CUSTOMIZE YOUR **EX**PERIENCE.

At Experience Brands, we believe every space deserves unique lighting elements. We proudly specialize in crafting solutions that reflect your personal vision. Our expert team is here to collaborate with you to design and implement customized features that elevate your environment.

Ready to Get Started? Email us at: DesignServices@exp-brands.com