

CAPITAL 600 MC

Dynamic White



DESCRIPTION

CAPITAL 600 MC floodlight is available with a vast choice of combinable optics and color configurations for the maximum lighting design flexibility. Featuring full independent control of each LED luminaire, this twin cluster luminaire system allows absolute freedom in a minimal footprint to create impressive matching or divergent dynamic effects on large-scale façades and architectural elements from a long distance with surprising luminous output.



Date: _____ Type: _____ Catalog Number: _____

Project Name: _____

ORDERING INFORMATION

LUMINAIRE								
MODEL	COLOR	CONTROL	CABLE	VOLTAGE	OPTIC (TOP LUMINAIRE)*	OPTIC (BOTTOM LUMINAIRE)*	FINISH	OPTION
CP600MC Capital 600 MC	DW Dynamic White	DMX-RDM DMX/RDM	S Power in (7.9 in.), DMX in, DMX out (59 in.)	UNV 120 - 277V	SP Spot 7°	SP Spot 7°	AG Anthracite Grey	MG Marine Grade
CP600MCPE Capital 600 MC Polar Edition			M Monocable only (19.7 in.)		NB Narrow 10°	NB Narrow 10°	BL Black	3G 3G Mounting Yoke
			C Monocable with connectors (19.7 in.)		MB Medium 23°	MB Medium 23°	SG Griven Silver Grey	
					WB Wide 35°	WB Wide 35°	WH White	
							CC Custom RAL Color	

* Contact factory for other optical options

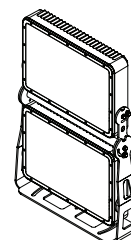
		CAPITAL 600 MC
PHYSICAL	HOUSING	Die-cast aluminum
	HOUSING DIMENSIONS	20.35"w x 29.75"h x 4.11"d
	OVERALL DIMENSIONS	20.35"w x 29.75"h x 4.11"d
	WEIGHT	32.4 lbs
	EPA	3.72 ft ²
	OPERATING TEMPERATURE	-40°C to 50°C (-40°F to 122°F)

PHOTOMETRIC	LED	Dynamic White
	# LEDS	48 multi-chip LEDs
	DELIVERED LUMEN OUTPUT	17,641 to 19,556 per luminaire
	EFFICACY	Up to 74 lumens per watt
	L70 LUMEN MAINTENANCE	100,000 Hours @ 25°C
	# DISTRIBUTIONS	Spot, Narrow, Medium, Wide
	LIGHT CONTROL ACCESSORIES	Visor, Snoot, Spreading Diffusers (Contact Factory)

LIGHT DISTRIBUTIONS*	DISTRIBUTION	BEAM ANGLE	LUMENS	MAX CANDELA
	SPOT	7°	19556 per luminaire	795,675 per luminaire
	NARROW	10°	19038 per luminaire	428,945 per luminaire
	MEDIUM	23°	18193 per luminaire	98,389 per luminaire
	WIDE	35°	17641 per luminaire	46,759 per luminaire

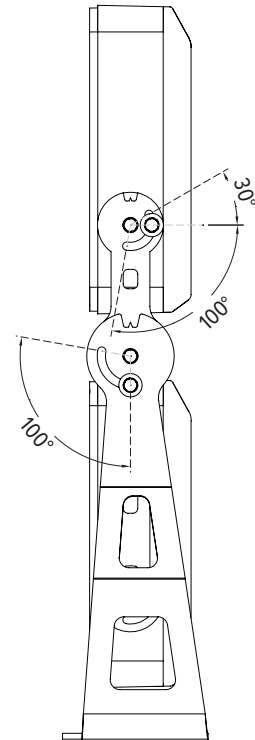
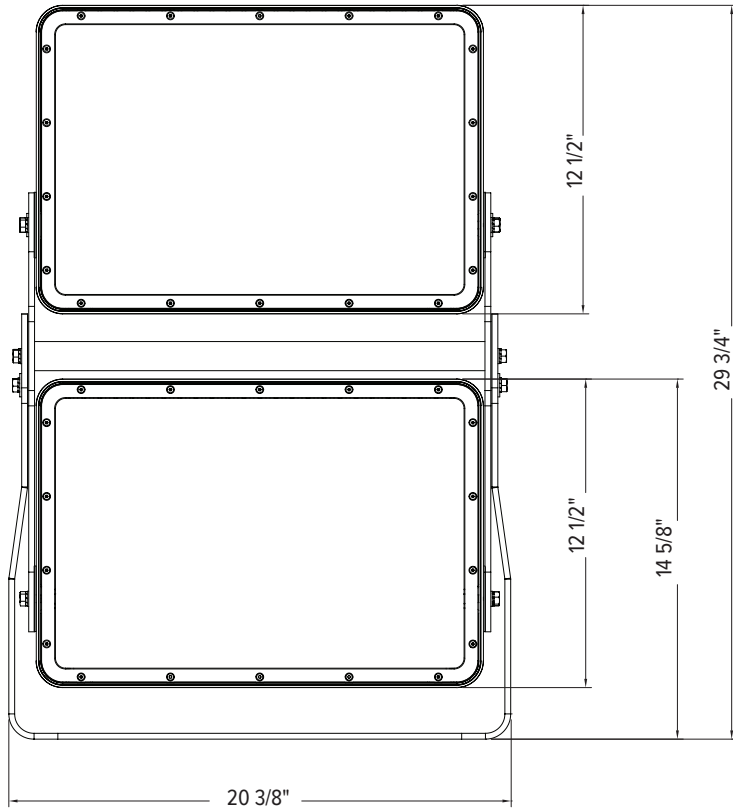
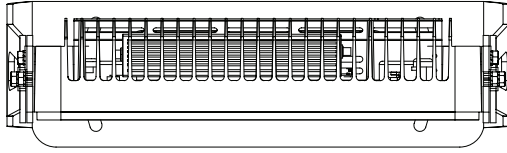
ELECTRICAL	POWER CONSUMPTION	2x 266 watts max	
	AMPERAGE	1.33A @ 120V or 0.57A @ 277V	
	CONTROL	DMX-RDM. Includes onboard standalone sequencing or master-satellite operation without DMX control systems when programmed with infra-red configuration remote (Ordering code AL1321)	
	MODES	- DW (2 channels)	- Master/Satellite
		- DW + Intensity (3 channels)	- Stand-Alone Fixed CCT
		- DW 16-Bit Mode (4 channels)	

CERTIFICATIONS	SAFETY	ETL Listed for Wet Locations
	INGRESS PROTECTION	IP67
	IMPACT RATING	IK09
	EUROPEAN	RoHS

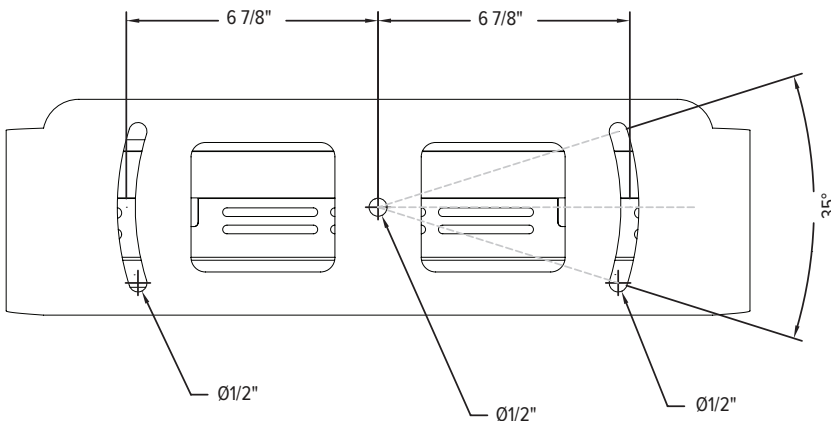


DIMENSIONS

All dimensions are shown in inches unless otherwise noted.



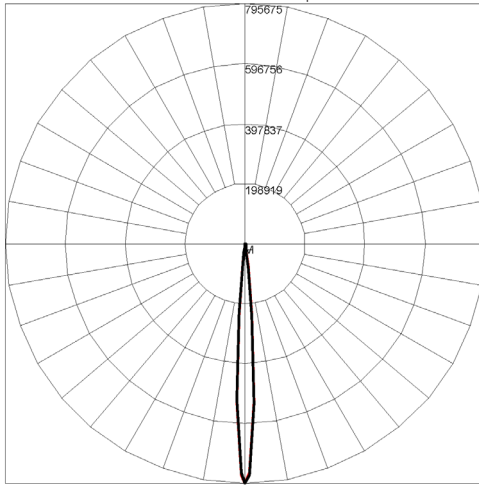
MOUNTING



PHOTOMETRICS - DYNAMIC WHITE CANDELA DISTRIBUTION
(Per Luminaire) — HORIZONTAL
— VERTICAL

SPOT 7°

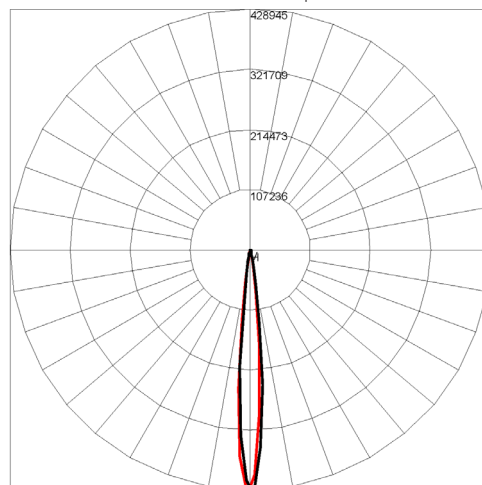
Maximum Candela = 795675 / 19556 lms per luminaire



Maximum Candela = 795674.938 Located At Horizontal Angle = 0, Vertical Angle = 0
H - Horizontal Axial Candela
V - Vertical Axial Candela

NARROW 10°

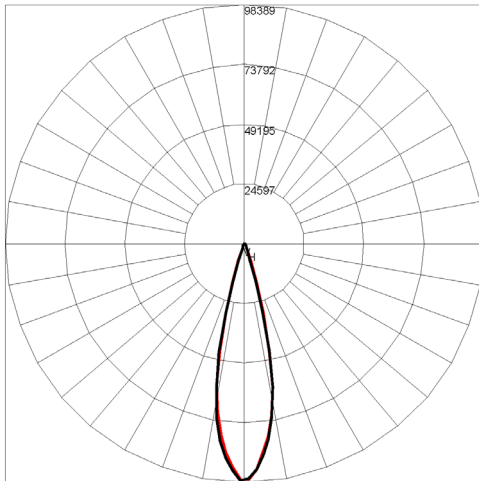
Maximum Candela = 428945 / 19038 lms per luminaire



Maximum Candela = 428945.188 Located At Horizontal Angle = -1, Vertical Angle = 0
H - Horizontal Axial Candela
V - Vertical Axial Candela

MEDIUM 23°

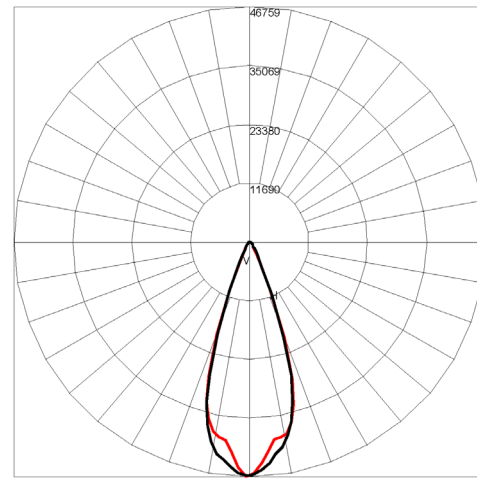
Maximum Candela = 98389 / 18193 lms per luminaire



Maximum Candela = 98389.446 Located At Horizontal Angle = -1, Vertical Angle = -1
H - Horizontal Axial Candela
V - Vertical Axial Candela

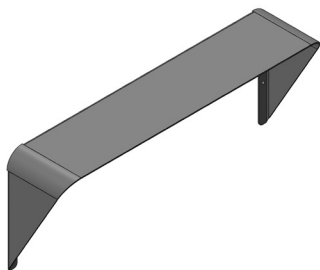
WIDE 35°

Maximum Candela = 46759 / 17641 lms per luminaire

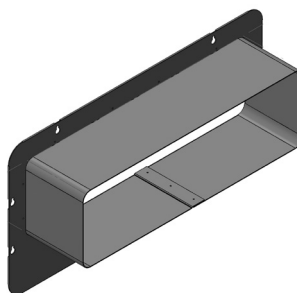


Maximum Candela = 46759.003 Located At Horizontal Angle = -1, Vertical Angle = -1
H - Horizontal Axial Candela
V - Vertical Axial Candela

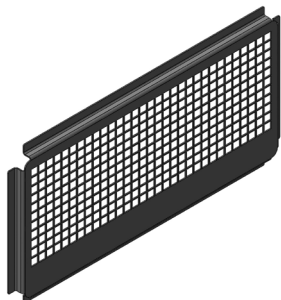
ACCESSORIES



AL8235-XX*
Visor (Per Luminaire)



AL8236-XX*
Snoot (Per Luminaire)



AL8237-XX*
Wire Guard (Per Luminaire)



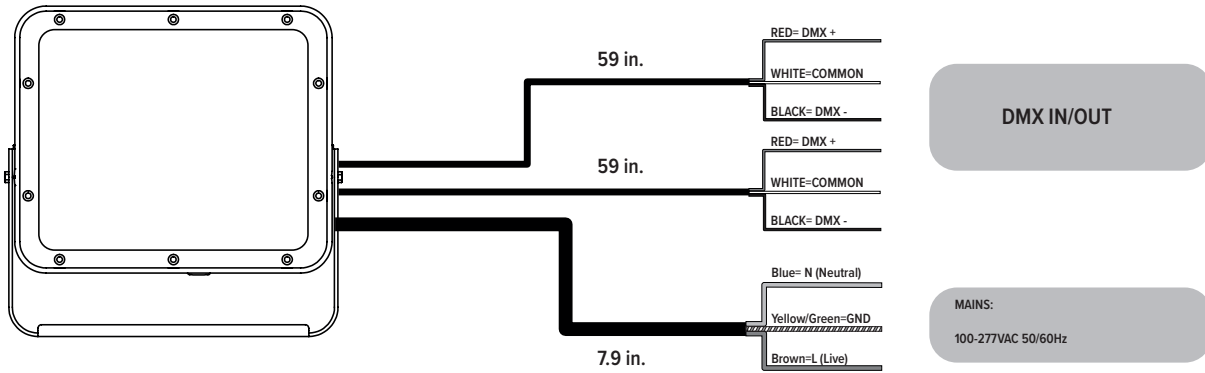
AL1321
Infrared Configuration Remote

XX*- ACCESSORY FINISHES

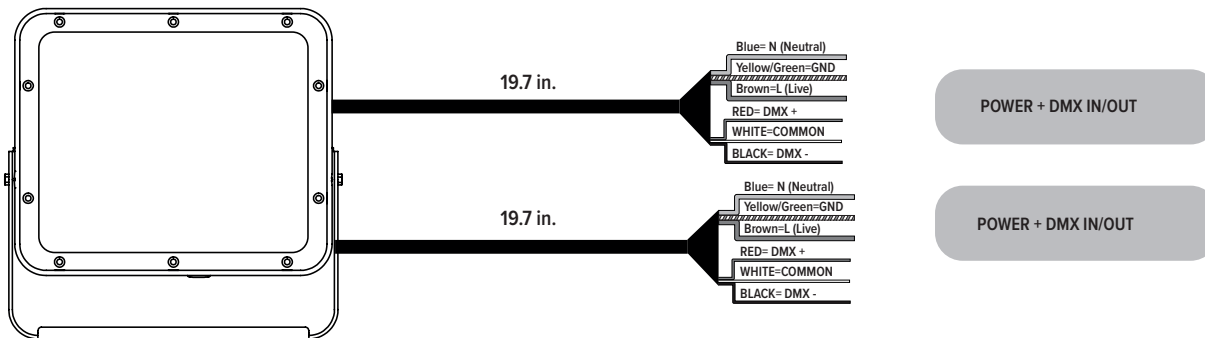
AG	Anthracite Grey
BL	Black
SG	Griven Silver Grey
WH	White
CC	Custom Color

Connection

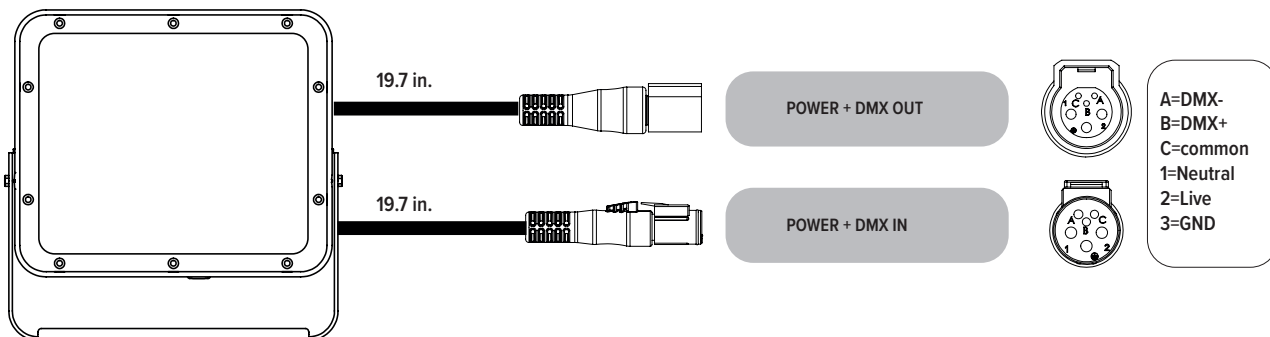
“S” type cable (Power in, DMX In, DMX Out)



“M” type cable (Monocable without connectors)



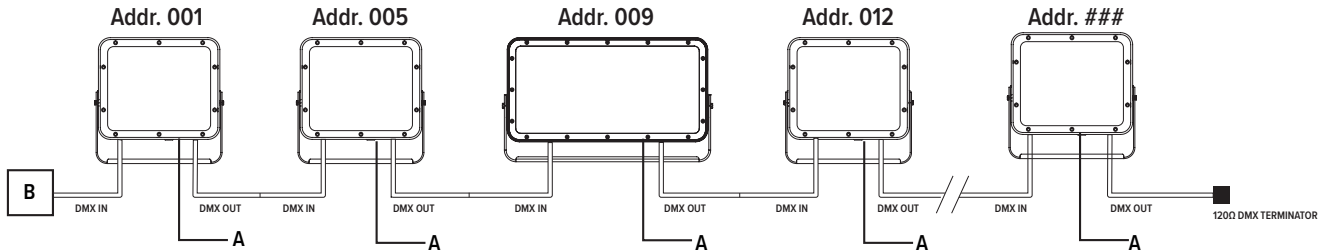
“C” type cable (Monocable + connectors)



Note: the power and signal connections of S and M cable types can be carried out by using the connection kit included in the packing box. Follow the instructions provided along with the connection kit.

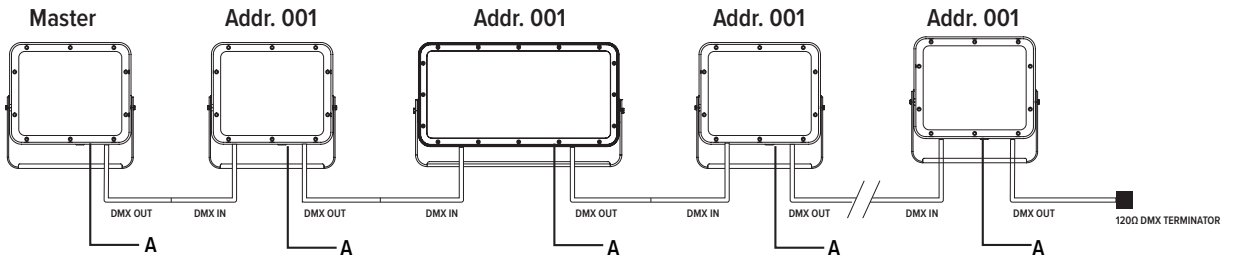
Operating modes

DMX Mode



Example with fixtures set to 4 DMX channels

Master-Slave / Automatic / Fixed color Mode (Only DMX Mode #1)



WARNING ! in this mode, no DMX control device must be present along the line.