

DESCRIPTION

CAPITAL 600 MC floodlight is available with a wide choice of combinable optics and color configurations for the maximum lighting design flexibility. Featuring full independent control of each LED luminaire, this twin cluster luminaire system allows absolute freedom in a minimal footprint to create impressive matching or divergent dynamic effects on large-scale façades and architectural elements from a long distance with surprising luminous output.



Date: _____ Type: _____ Catalog Number: _____

Project Name: _____

ORDERING INFORMATION

| LUMINAIRE | | | | | | | | |
|---|-------------------------------|--------------------|--|-------------------|------------------------|---------------------------|--------------------------|------------------------|
| MODEL | COLOR | CONTROL | CABLE | VOLTAGE | OPTIC (TOP LUMINAIRE)* | OPTIC (BOTTOM LUMINAIRE)* | FINISH | OPTION |
| CP600MC Capital 600 MC | RGBW30K RGBW (3000K White) | DMX-RDM DMX/RDM | S Power in (7.9 in.), DMX in, DMX out (59 in.) | UNV 120 - 277V | SP Spot 7° | SP Spot 7° | AG Anthracite Grey | MG Marine Grade |
| CP600MCPE Capital 600 MC Polar Edition | RGBW40K RGBW (4000K White) | | M Monocable only (19.7 in.) | | NB Narrow 10° | NB Narrow 10° | BL Black | 3G 3G Mounting Yoke |
| | | | | | MB Medium 23° | MB Medium 23° | SG Griven Silver Grey | |
| | | | | | WB Wide 35° | WB Wide 35° | WH White | |
| | | | C Monocable with connectors (19.7 in.) | | | | CC Custom RAL Color | |

* Contact factory for other optical options

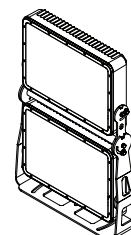
| | | CAPITAL 600 MC |
|----------|-----------------------|--------------------------------|
| PHYSICAL | HOUSING | Die-cast aluminum |
| | HOUSING DIMENSIONS | 20.35"w x 29.75"h x 4.11"d |
| | OVERALL DIMENSIONS | 20.35"w x 29.75"h x 5.91"d |
| | WEIGHT | 72.3 lbs |
| | EPA | 3.72 ft ² |
| | OPERATING TEMPERATURE | -40°C to 50°C (-40°F to 122°F) |

| | | |
|-------------|---------------------------|---|
| PHOTOMETRIC | LED | RGBW (4000K) |
| | # LEDS | 48 multi-chip LEDs |
| | DELIVERED LUMEN OUTPUT | Up to 23,006 lumens |
| | EFFICACY | Up to 43 lumens per watt per luminaire |
| | L70 LUMEN MAINTENANCE | 100,000 Hours @ 25°C |
| | # DISTRIBUTIONS | Spot, Narrow, Medium, Wide |
| | LIGHT CONTROL ACCESSORIES | Visor, Snoot, Wire Guard, Spreading Diffusers (Contact Factory) |

| LIGHT DISTRIBUTIONS* | DISTRIBUTION | BEAM ANGLE | LUMENS | MAX CANDELA |
|----------------------|--------------|------------|---------------------|-----------------------|
| | SPOT | 7° | 11505 per luminaire | 468,023 per luminaire |
| | NARROW | 10° | 11199 per luminaire | 252,325 per luminaire |
| | MEDIUM | 23° | 10702 per luminaire | 57,877 per luminaire |
| | WIDE | 35° | 10377 per luminaire | 27,505 per luminaire |

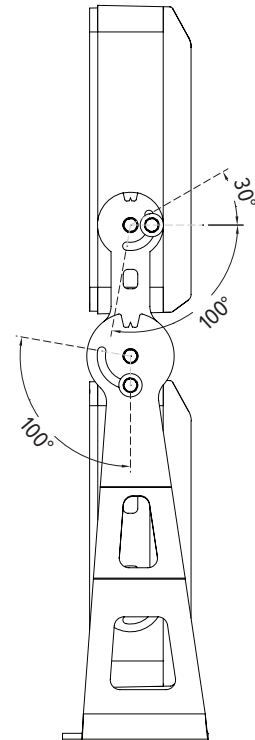
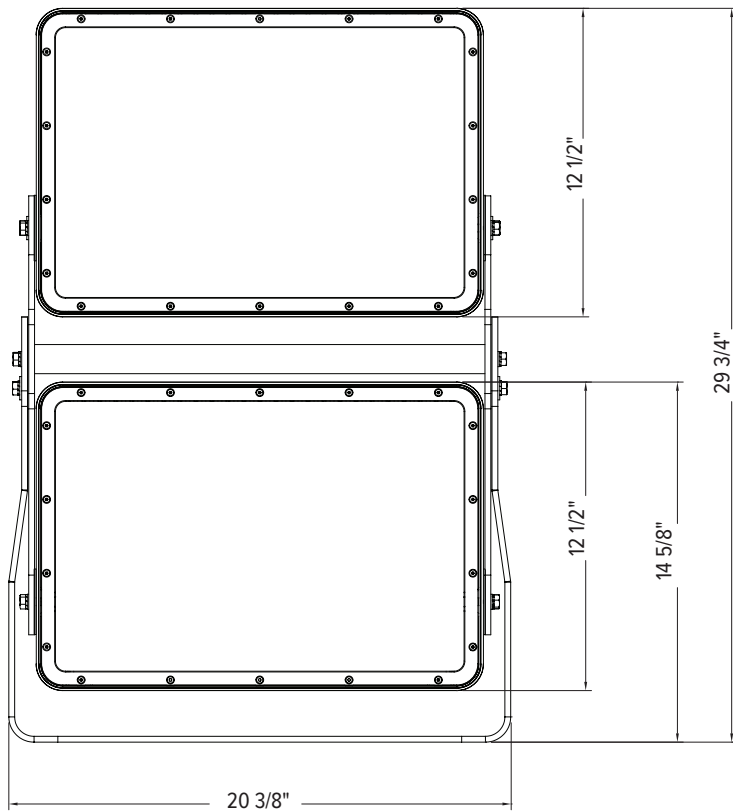
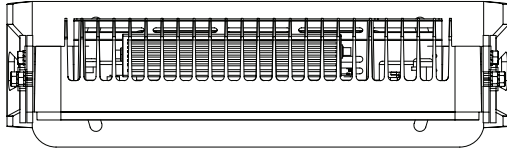
| | | | | |
|------------|-------------------|--|--------------------------------------|-------------------------|
| ELECTRICAL | POWER CONSUMPTION | 2x 266 watts max | | |
| | AMPERAGE | 2.2A @ 120V or 1.0A @ 277V per luminaire | | |
| | CONTROL | DMX-RDM. Includes onboard standalone sequencing or master-satellite operation without DMX control systems when programmed with infra-red configuration remote (Ordering code AL1321) | | |
| | MODES | - RGBW (4 channels) | - 16-Bit Mode (8 channels) | - Master Satellite Mode |
| | | - RGBW + Intensity (5 channels) | - RGBW Calibrated White (4 channels) | |
| | | -RGBW + Intensity + Strobe (6 channels) - Fixed Color | | |

| | | |
|----------------|--------------------|------------------------------|
| CERTIFICATIONS | SAFETY | ETL Listed for Wet Locations |
| | INGRESS PROTECTION | IP67 |
| | IMPACT RATING | IK09 |
| | EUROPEAN | RoHS |

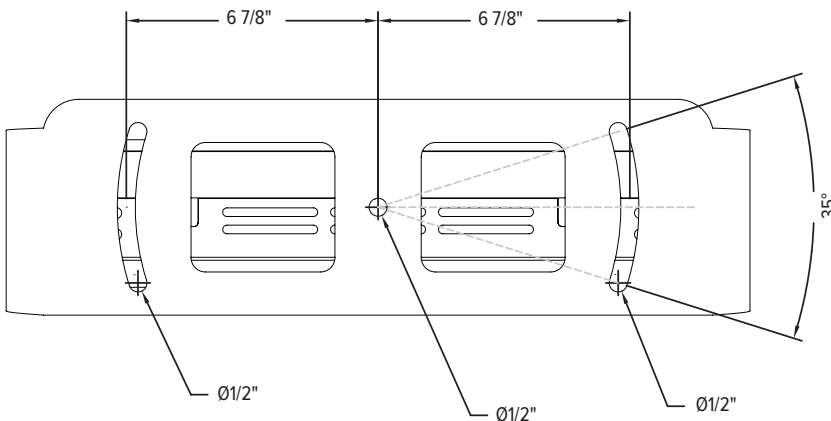


DIMENSIONS

All dimensions are shown in inches unless otherwise noted.



MOUNTING

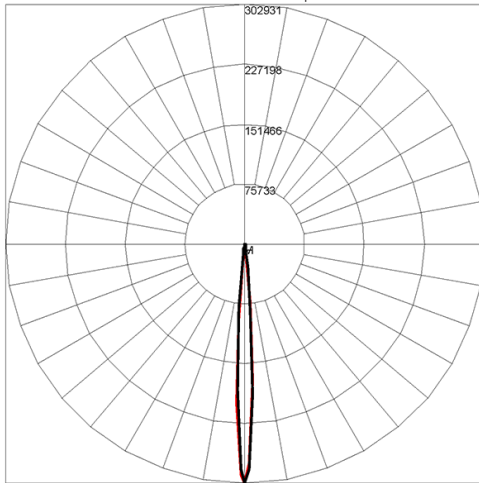


PHOTOMETRICS - RGBW CANDELA DISTRIBUTION
(Per Luminaire)

 HORIZONTAL
 VERTICAL

SPOT 7°

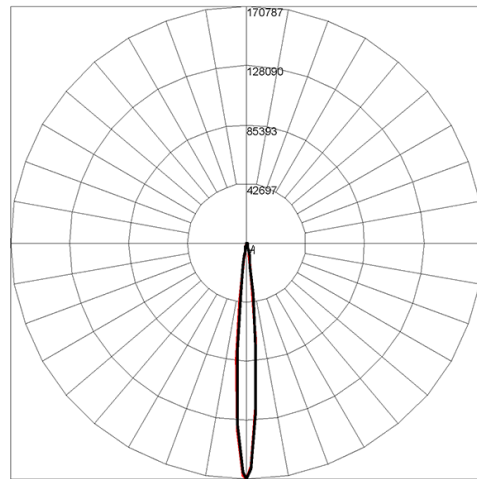
Maximum Candela = 468023 / 11503 lms per luminaire



Maximum Candela = 302931.313 Located At Horizontal Angle = 0, Vertical Angle = 0
H - Horizontal Axial Candela
V - Vertical Axial Candela

NARROW 10°

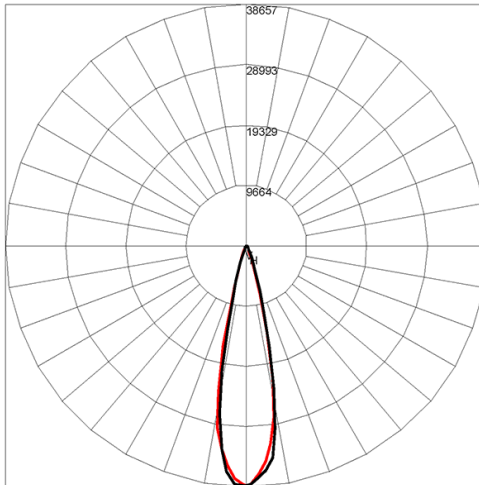
Maximum Candela = 252325 / 11199 lms per luminaire



Maximum Candela = 170786.703 Located At Horizontal Angle = 0, Vertical Angle = 0
H - Horizontal Axial Candela
V - Vertical Axial Candela

MEDIUM 23°

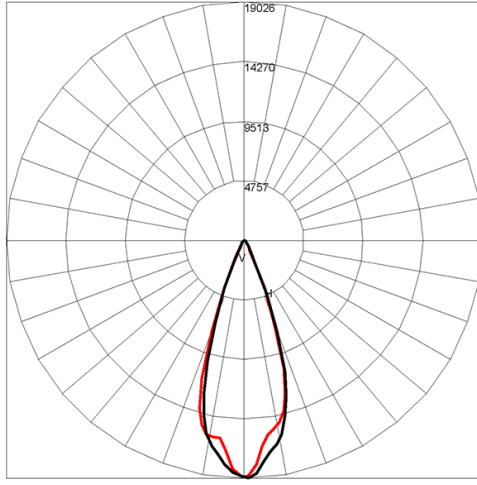
Maximum Candela = 57877 / 10702 lms per luminaire



Maximum Candela = 38657.483 Located At Horizontal Angle = -1, Vertical Angle = -1
H - Horizontal Axial Candela
V - Vertical Axial Candela

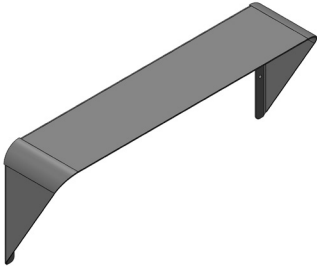
WIDE 35°

Maximum Candela = 27505 / 10377 lms per luminaire

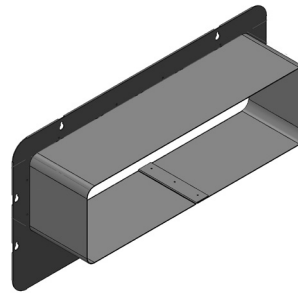


Maximum Candela = 19026.4 Located At Horizontal Angle = 0, Vertical Angle = 1
H - Horizontal Axial Candela
V - Vertical Axial Candela

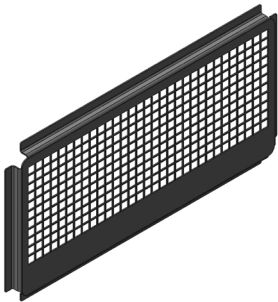
ACCESSORIES



AL8235-XX*
Visor (Per Luminaire)



AL8236-XX*
Snoot (Per Luminaire)



AL8237-XX*
Wire Guard (Per Luminaire)



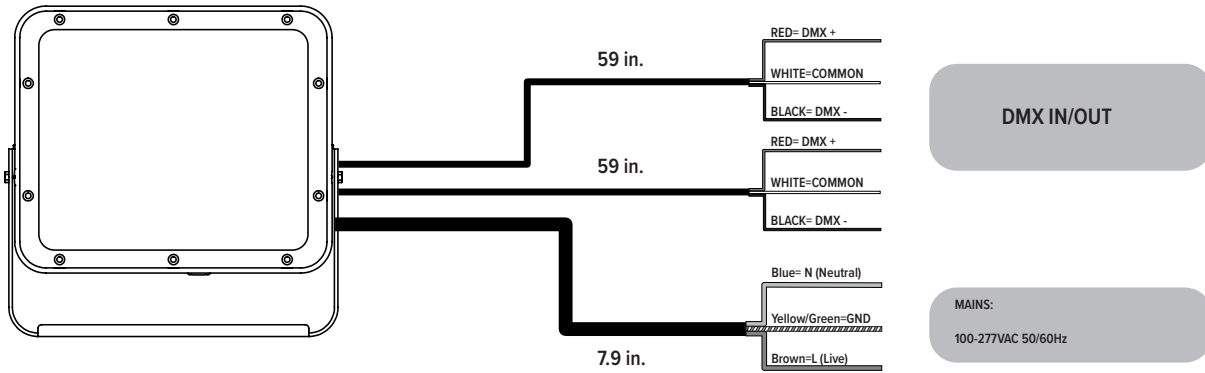
AL1321
Infrared Configuration Remote

XX*- ACCESSORY FINISHES

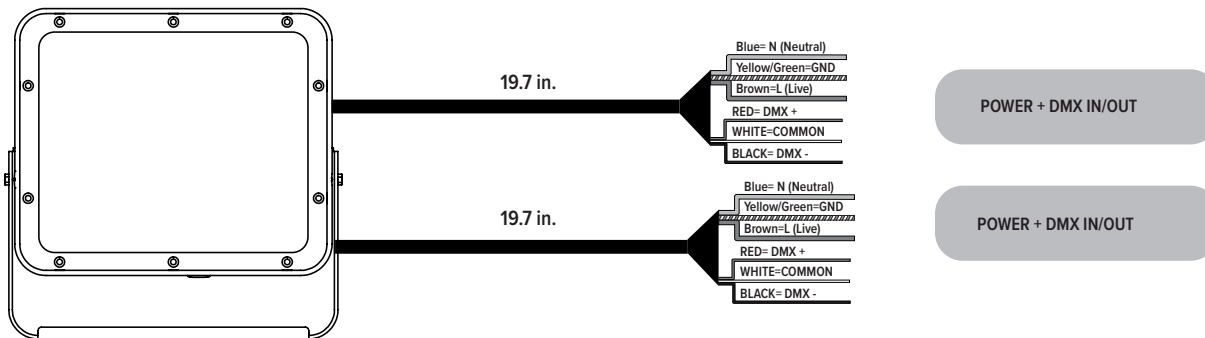
| | |
|----|--------------------|
| AG | Anthracite Grey |
| BL | Black |
| SG | Griven Silver Grey |
| WH | White |
| CC | Custom Color |

Connection

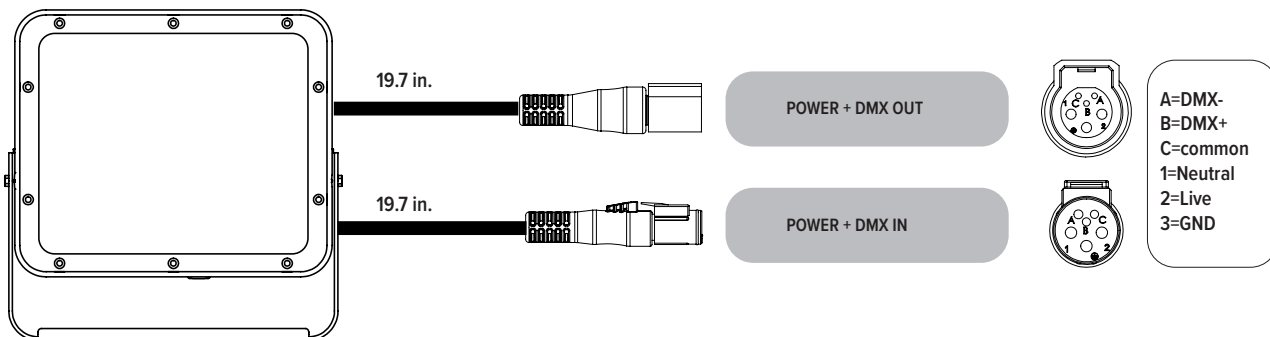
“S” type cable (Power in, DMX In, DMX Out)



“M” type cable (Monocable without connectors)



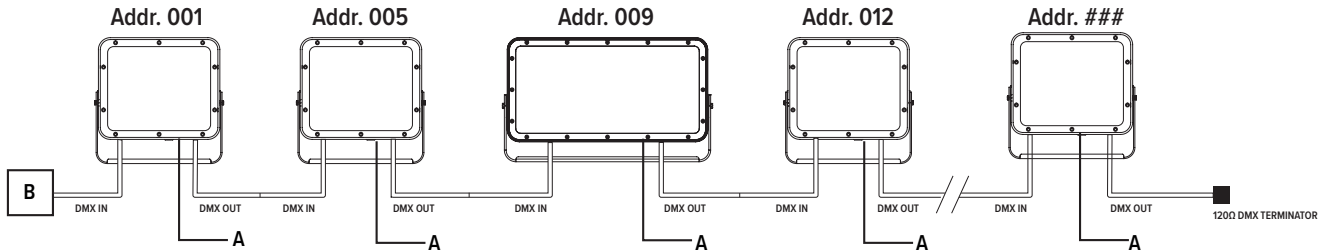
“C” type cable (Monocable + connectors)



Note: the power and signal connections of S and M cable types can be carried out by using the connection kit included in the packing box. Follow the instructions provided along with the connection kit.

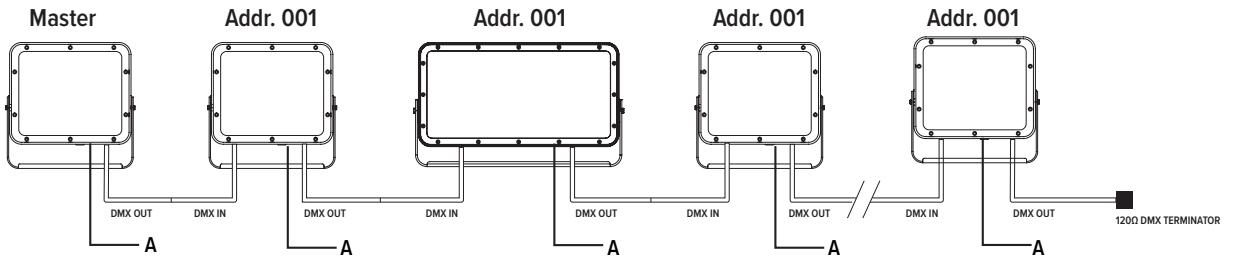
Operating modes

DMX Mode



Example with fixtures set to 4 DMX channels

Master-Slave / Automatic / Fixed color Mode (Only DMX Mode #1)



WARNING ! in this mode, no DMX control device must be present along the line.