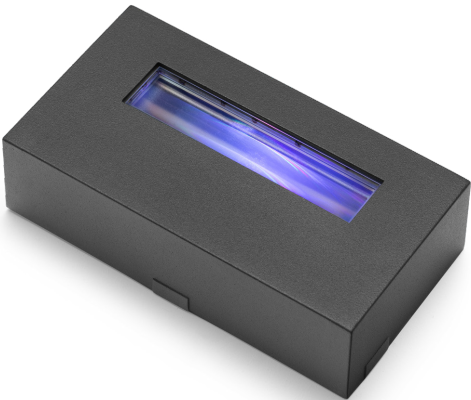


DESCRIPTION

EKLIPSE adds form and depth to buildings of all architectural styles through the illumination of inner frames of fenestration or similar elements. The compact LED “effects” luminaire features four high power LEDs in RGBW, dynamic white, or static colors combined with specialized optics to produce an ultra-narrow elliptical distribution with little spill. RGBW and dynamic white models feature DMX control capability to bring repeating architectural elements to life through patterns or color-changing scenes for visual interest. The LEDs may be dimmed continuously from 0 to 100%. EKLIPSE is IP66 rated and suitable for indoor or outdoor applications. All hardware is stainless steel.



Date: \_\_\_\_\_ Type: \_\_\_\_\_ Catalog Number: \_\_\_\_\_

Project Name: \_\_\_\_\_

ORDERING INFORMATION

LUMINAIRE						
MODEL	CCT	CONTROL	CABLE	VOLTAGE	OPTIC	FINISH
EKLPS Eclipse	RGBW40K RGBW 4000K	DMX-RDM DMX/RDM	M Monocable Without Connectors (59")	UNV 100-277v	ELH Elliptical 127° x 13°	AG Anthracite Gray
	DW Dynamic White (2700K to 6500K)				ELWH Elliptical Wide 50° x 21°	BL Black
	30K 3000K					SG Griven Silver Grey
	40K 4000K					WH White
						CC Custom RAL Color

Custom solutions are available; consult factory via phone at (864) 487-3535 ext. 258 or via email at DesignServices@EXP-Brands.com.

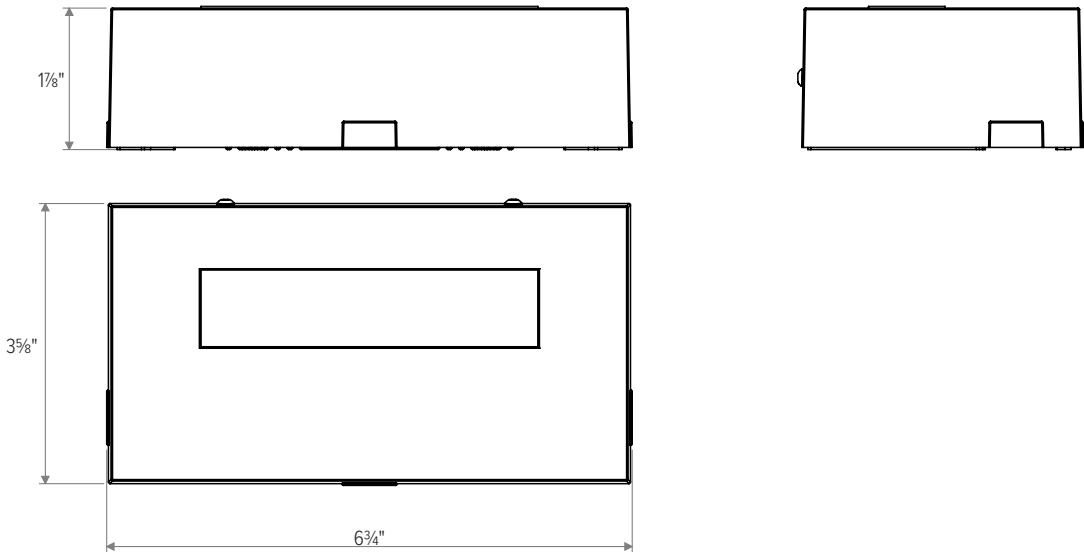
See Page 3 for ordering information of required and available accessories.



EKLIPSE		
PHYSICAL	HOUSING	Die-Cast Aluminum
	LENS	PMMA
	DRIVER	Remote (Sold Separately)
	DIMENSIONS	6.7" L x 3.6" W x 1.8" H
	WEIGHT	2.2 Pounds
	OPERATING TEMPERATURE	-40°F to 122°F (-40°C to 50°C)
ELECTRICAL	POWER	10 Watts
	CURRENT	0.08 amps at 120 volts 0.04 amps at 277 volts
	CONTROL	DMX-RDM
	CABLE	Power & Data In, Power & Data Out
	CABLE LENGTH	59"
PHOTOMETRIC	LED	RGBW+4000K, Dynamic White (2700K to 6500K), 3000K, 4000K
	DELIVERED LUMEN OUTPUT	Up to 472 Lumens
	EFFICACY	Up to 47 Lumens per Watt
	LUMEN MAINTENANCE	L70 > 100,000 Hours at 77°F*
CERTIFICATIONS	SAFETY	ETL Certified for Wet Locations
	INGRESS PROTECTION	IP66
	IMPACT RATING	IK07
	WARRANTY	Five Year Limited Warranty

DIMENSIONS

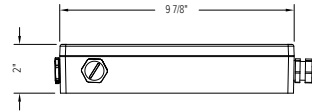
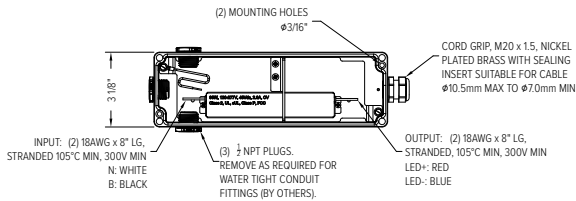
All dimensions are shown in inches unless otherwise noted.



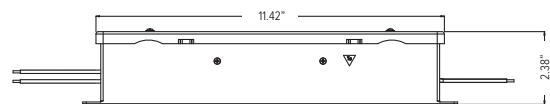
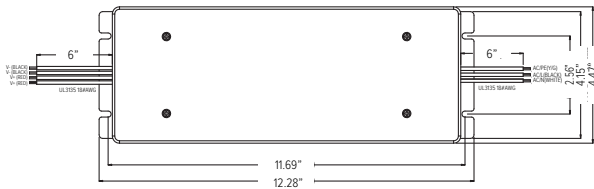
\* LED life may vary under actual field conditions due to external factors. Lifetime estimates are generated from actual testing in a controlled environment. Values are conservatively derived from those numbers.

## REMOTE POWER SUPPLIES

RMTPS-UNV-96-48-N											
Driver Type	Description	Nominal Input Voltage (VAC)	Number of Channels	P-Out Max (W)	V-Out Max (Vdc)	I-Out Min (A)	I-Out Max (A)	Open Loop Voltage (No Load Vout Max) (Vdc)	Fixture Cable	NPT Plugs	Enclosure
On/Off	Remote Power Supply, 120-277v, 96 Watts, 48v Output, On/Off	120 to 277	1	96	48	0.1	2.0	51.36	1 Cord Grip	(3) 1/2 NPT Plugs to be removed as required for 1/2 NPT water tight conduit fittings (by others)	Included, IP66 Rated




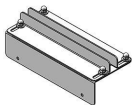
RMTPS-UNV-200-48-N																
Driver Type	Description	Nominal Input Voltage (VAC)	Number of Channels	P-Out Max (W)	Constant Current Mode					Constant Voltage Mode					Max Output Power (per channel) (W)	Enclosure
					Current Per Channel (A)	Compliance (LED) Voltage (Vdc)	I-Out Max (A)	Current Pot Adjustable Range (All Channels) (A)		Preset Vout (Vdc)	Load Range (per channel) (A)		Voltage Pot Adjustable Range (Vdc)			
						Min.		Max.	Min.		Max.	Min.	Max.	Min.		
On/ Off	Remote Power Supply, 120-277v, 200 Watts, 48v Output, On/Off	90-305	2	200	2.1	24	48	0.21	4.38	48	0	2.19	33.6	50.4	100	Integral to Driver; Plug and Play



## ACCESSORIES

NOTE: Accessories are ordered and shipped separately from luminaire for field installation. XX\* indicates a painted accessory. See below for painted accessory ordering information.

PAINTED ACCESSORIES					
MODEL		FINISH (*-XX)		OPTION	
<div>EKLPS-SNOOT</div> 	Snoot	AG	Anthracite Grey	AST	Anti-Saline Treatment
		BL	Black		
		SG	Griven Silver Grey		
		WH	White		
		CC	Custom RAL Color		



PHOTOMETRICS

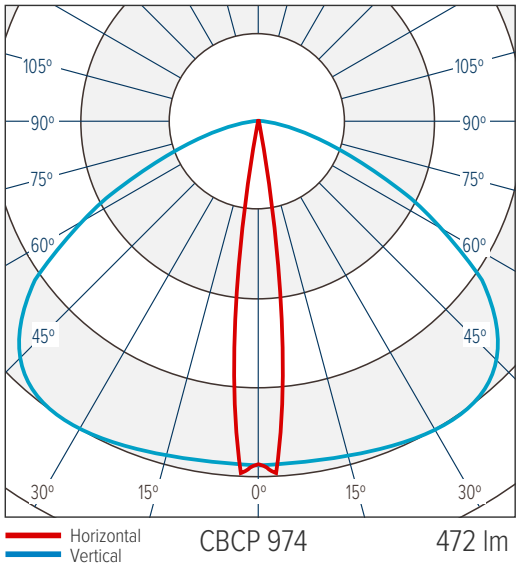
LIGHT OUTPUT

Photometric data based on cool white LEDs. Use multiplier to determine lumen and CBCP output for RGBW, DW, or WW.

COLOR	OUTPUT MULTIPLIER
RGBW (6500K White)	.42
DW (2700-6500K)	.85
CW (6300K)	1.00
WW (3000K)	.70

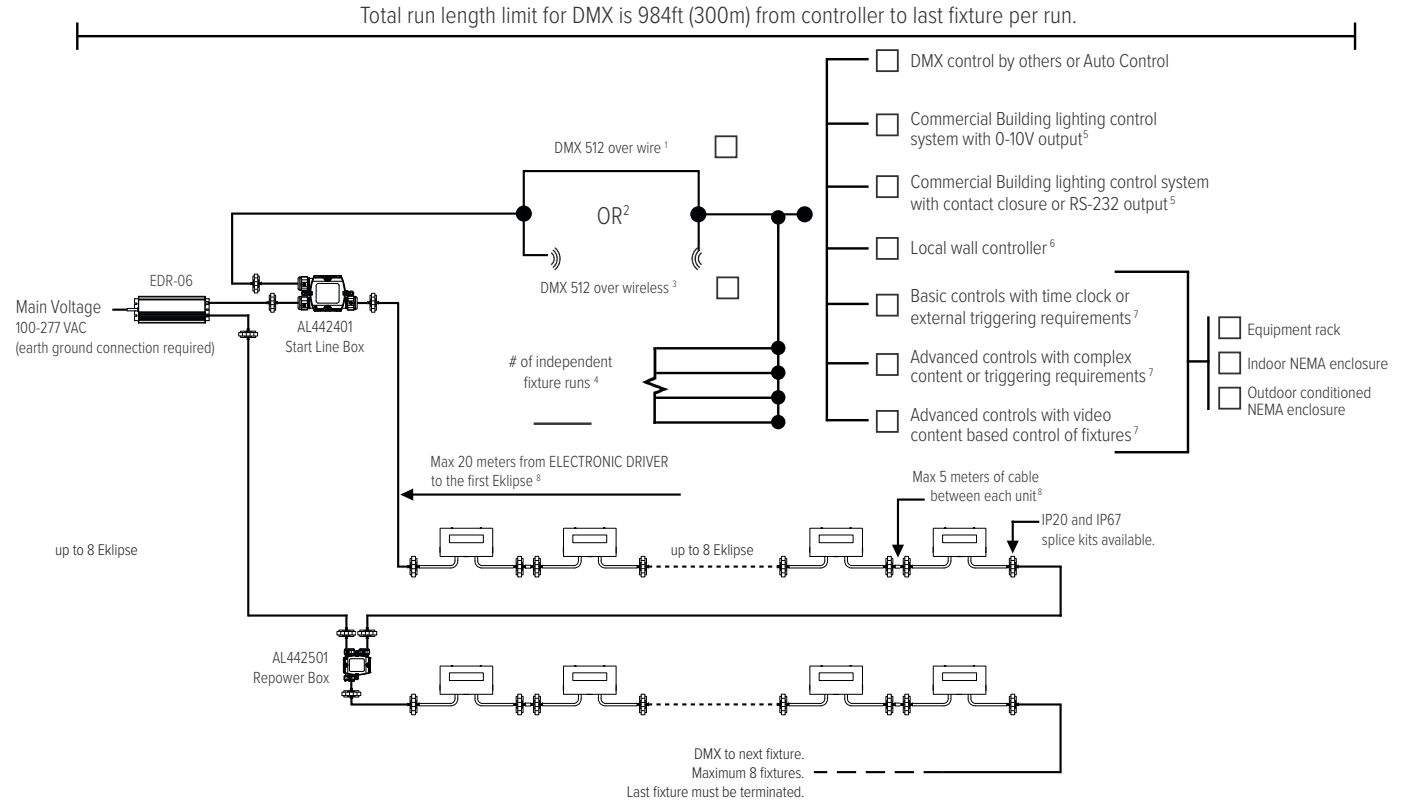
CANDELA DISTRIBUTION

ELLIPTICAL 127° x 13° (6300K)



## CONTROL OPTIONS

Contact manufacturer for control system development.



## Notes

1. Wire specifications are available from factory as well as approved wire for purchase.
2. Other control protocol solutions available. Contact factory for more information.
3. Wireless components are external to fixture. Distance limitations based on antennas chosen and site conditions. Contact factory for more information.
4. Based on maximum of 32 fixtures per run as well as any site constraints on conveyance of data.
5. For example: Lutron, Crestron, Encelium, Douglas, ETC by others. Given control system will interface with building lighting control system.
6. Local wall controller for small applications. Wall controllers specified separately for larger systems.
7. Contact factory for assistance with specification. Onsite commissioning by Griven of control system is required.
8. Based on 1.5mm<sup>2</sup> cable cross section. Contact factory for assistance in developing alternate configurations.

## PRODUCT OPTIONS



### MARINE GRADE COATING

Maximum corrosion resistance for installations near salt or brackish water.



### CUSTOM WHITE LIGHT

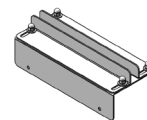
Choose the white light you need for your project. Contact Griven USA to confirm availability of a custom CCT.



### CUSTOM MONOCHROME

Fixtures with dedicated color LEDs available. Contact Griven USA to confirm availability of a custom color.

## ACCESSORIES



Anti-Glare Shield

