

DESCRIPTION

GEA is an innovative in-ground luminaire with unprecedented optical configuration for illuminating entire building facades of up to 59-feet. Its unique Dynamic Wall Wash configuration incorporates three distinct, individually configurable LED rows to deliver an even wall-wash effect for both close-up and distant installations. The elegant stainless steel frame allows for a seamless and discrete integration into pavements, and has a load bearing capacity of up to 6613 pounds. GEA is available in RGBW30K, RGBW40K, Dynamic White, or Static White temperatures of 2700K, 3000K, or 4000K standard. Optional anti-slip lens and internal honeycomb louver are available.

Date: _____ Type: _____ Catalog Number: _____

Project Name: _____



Gea 2700K



Gea 4000K

ORDERING INFORMATION

LUMINAIRE						
MODEL	CCT	CONTROL	CABLE	VOLTAGE	OPTIC	OPTION
GEA	27K	DMX-RDM	4	UNV	DWW	ASL
Gea	2700K	DMX/RDM	Power In, Power Out, DMX In, DMX Out (59")	120 - 277V	Dynamic Wall Wash	Anti-Slip Lens
	30K		S			LVR
	3000K		Power in, DMX in, DMX out (59")			Internal Honeycomb Louver
	40K		M			
	4000K		Monocable Without Connectors (19.7")			
			C			
			Monocable With Connectors (19.7")			

Consult factory for availability of custom options. Factory assistance is available via phone at (864) 487-3535 ext. 258 or via email at DesignServices@EXP-Brands.com.

See Page 4 for ordering information of available accessories.

		GEA
PHYSICAL	HOUSING	Stainless Steel Flange with Die-Cast Aluminum Body
	LENS	Tempered Glass
	FORMWORK	Galvanized Steel (Ordered Separately)
	MOUNTING	See page four for mounting details.
	DRIVER LOCATION	Integral
	DIMENSIONS	16.14" L x 13.58" W x 6.02" D
	WEIGHT	24.3 Pounds
	LOAD BEARING CAPACITY	6613 Pounds
	OPERATING TEMPERATURE	-40°F to 122°F (-40°C to 50°C)

ELECTRICAL	POWER	53 Watts			
	CURRENT	0.44 amps at 120 volts 0.19 amps at 277 volts			
	CONTROL	DMX/RDM			
	CABLE	"4" Type Cable	"S" Type Cable	"M" Type Cable	"C" Type Cable
		Power In, Power Out, DMX In, DMX Out	Power In, DMX In, DMX Out	Monocable Without Connectors	Monocable With Connectors
CABLE LENGTH	59"	59"	19.7"	19.7"	

PHOTOMETRIC	LED	2700K	3000K	4000K
	DELIVERED LUMEN OUTPUT	up to 2951 lumens	up to 2951 lumens	up to 3187 lumens
	EFFICACY	up to 56 lumens per watt	up to 56 lumens per watt	up to 60 lumens per watt
	LUMEN MAINTENANCE	L90 > 84,700 hours		

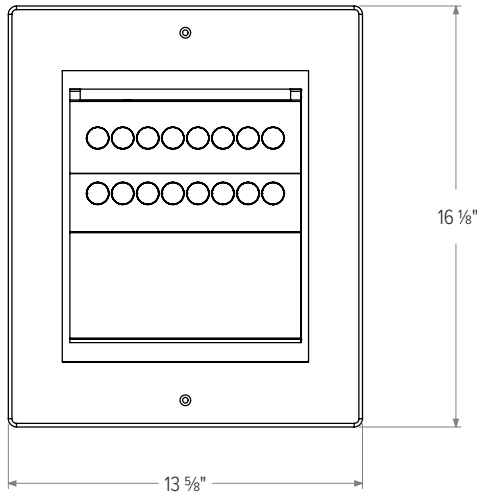
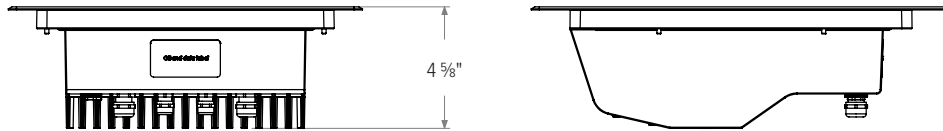
CERTIFICATIONS	SAFETY	ETL Certification Pending
	INGRESS PROTECTION	IP67
	IMPACT RATING	IK10
	WARRANTY	Five Year Limited Warranty

* LED life may vary under actual field conditions due to external factors. Lifetime estimates are generated from actual testing in a controlled environment. Values are conservatively derived from those numbers.

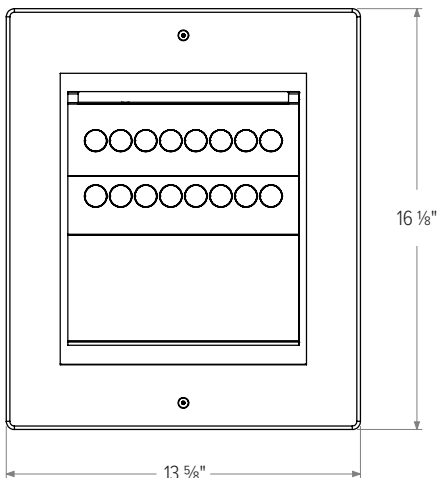
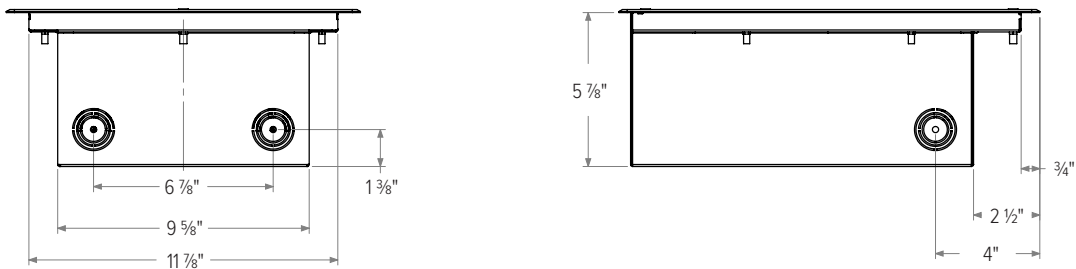
DIMENSIONS

All dimensions are shown in inches unless otherwise noted.

Luminaire Dimensions

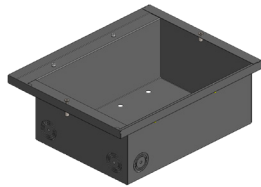


Luminaire + Recessed Rough-In Box Dimensions



ACCESSORIES

NOTE: Accessories are ordered and shipped separately from luminaire for field installation.
-XX* indicates a painted accessory. See bottom of page for painted accessory ordering information.



GEA-RRB

Formwork/Recessed Rough-In Box
(Required, Ordered Separately)



IR-CONFIG-REMOTE

Infrared DMX Configuration Remote
(Required for DMX Configuration Unless Another RDM Compatible Control is Used)

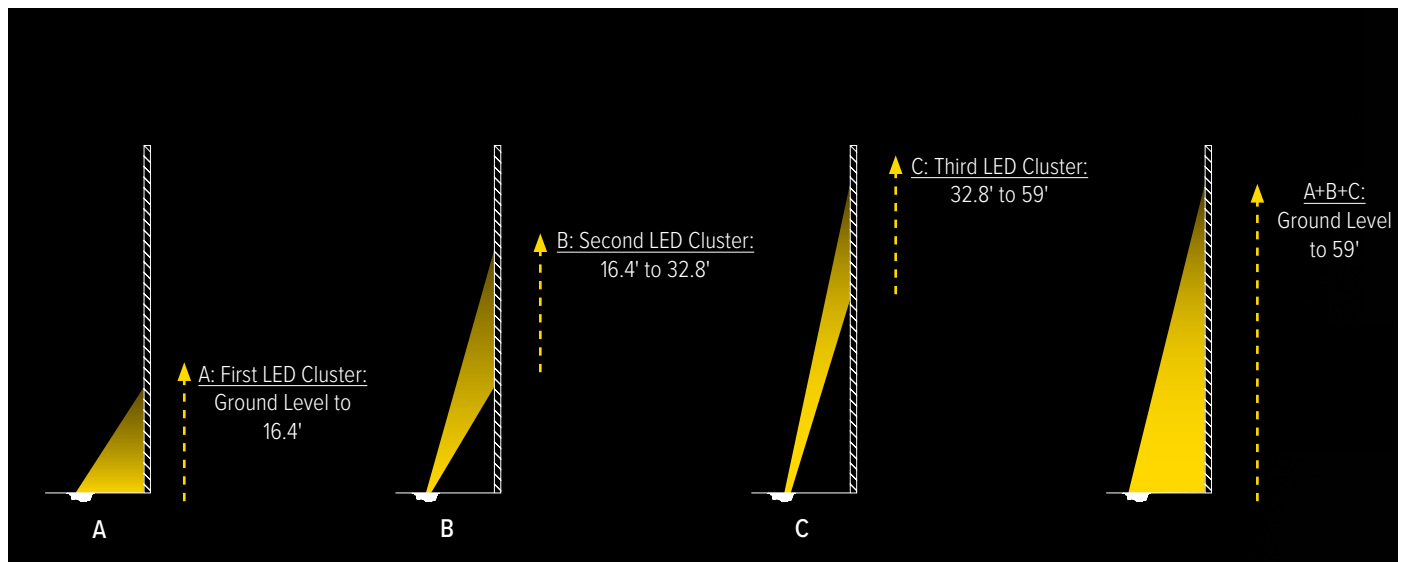
LUMINAIRE INSTALLATION

Due to the unique "Dynamic Wall Wash" Optics of GEA, Griven recommends the following measurements as a guideline for the best optical result.

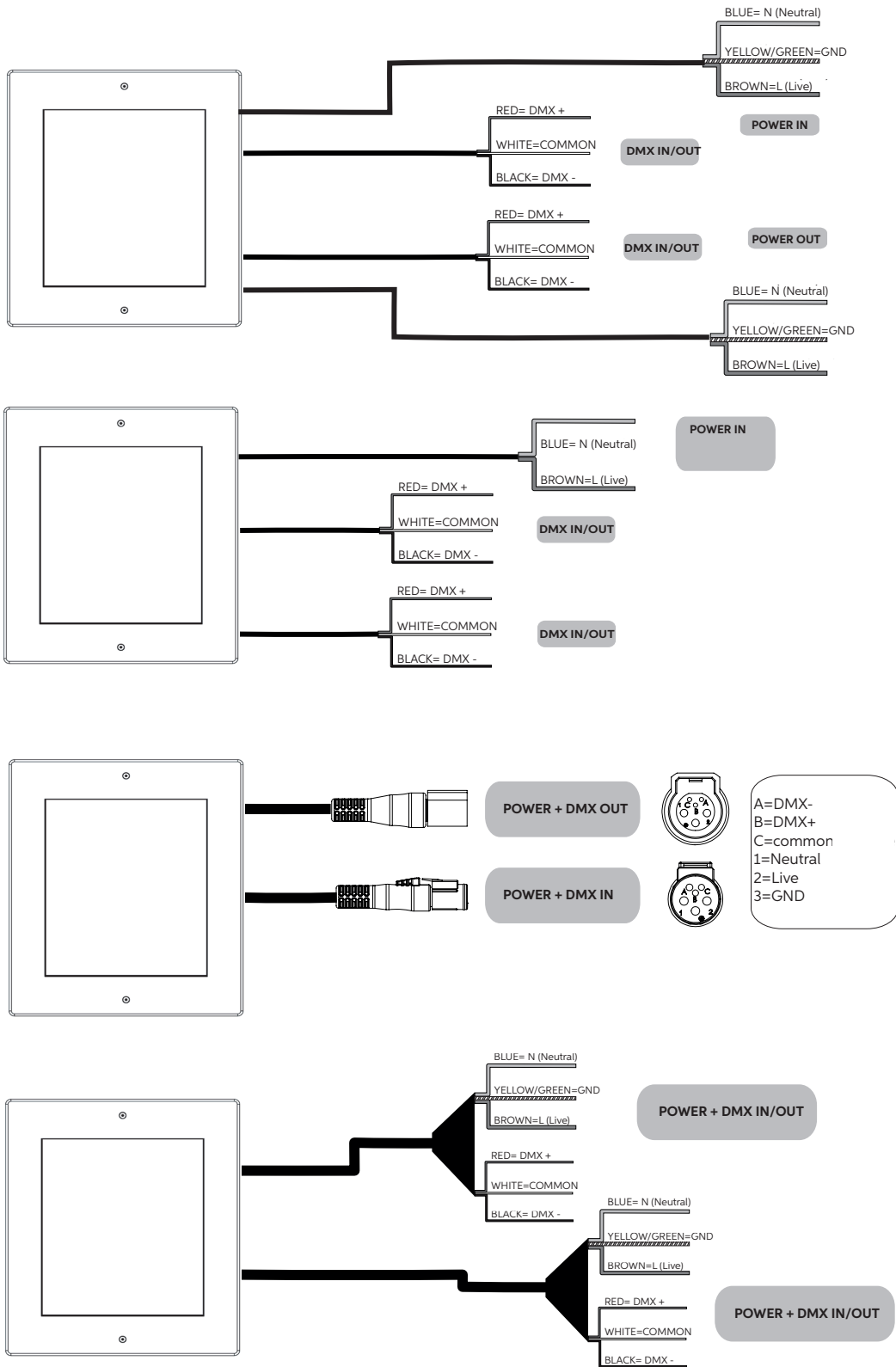
INSTALLATION GUIDELINES	BUILDING HEIGHT	19.7'	29.5'	39.4'	49.2'	59'
	DISTANCE FROM WALL	3.3'	4.9'	6.6'	8.2'	9.8'
	SPACING BETWEEN FIXTURES	4.3'	6.6'	8.8'	10.8'	13.1'

DYNAMIC WALL WASH

Dynamic Wall Wash is an innovative combination of three custom optics placed in separate rows. Rows are independently manageable and ensure optimal light distribution on building facades, exterior walls, or perimeters of historical and modern buildings up to 59' in height.



CONNECTION



DMX/RDM PROGRAMMING

STATIC WHITE DMX MODES		
MODE	FUNCTION	VALUE
#1	0-100% Dimmer	0-255

Note: In the absence of DMX signal, LEDs will remain on.

RDM FUNCTIONS		
---------------	--	--

When operating in DMX mode, the fixture can accept the following RDM commands:

Discovery: The fixture will signal its own presence (RDM controller will display the fixture on a list.)

DMX Address reading and setting

Channel number reading and setting

On/Off identification: used to identify the fixture you need access to (switches on all LEDs at full output)

Manufacturer: Displays the name of the manufacturer (Griven)

Model description: Displays the description of the model

Software version description

Temperature