

HALF MOON MARINE

Static White



DESCRIPTION

HALF MOON MARINE is an advanced LED luminaire designed to enhance landscape and architectural features located near coastal regions. This adaptable luminaire provides decorative and functional lighting with smart color management. Corrosion resistant stainless steel or brass materials ensure the longevity of the luminaire even in harsh, salt water areas. Four optical options are available ranging from Narrow to Extra Wide beam spreads. Use of an external power supply enables easy management of multiple units. Electropolishing and clear coating are available on request.



Date: _____ Type: _____ Catalog Number: _____

Project Name: _____

ORDERING INFORMATION

LUMINAIRE						
MODEL	MATERIAL	CCT	CONTROL	VOLTAGE	OPTIC	OPTION
MOONHF-MR Half Moon Marine	SS Stainless Steel	27K 2700K	DIM 0-10v Dimming	UNV 120 - 277V	NB Narrow 15°	ELP Electropolishing ¹
	BR Brass	30K 3000K			MB Medium 24°	CLR Clear Coat Finish ²
		40K 4000K			WB Wide 45°	
					ELH Elliptical 38° x 14°	² Clear coating is only available on brass versions.

Consult factory for availability of custom options. Factory assistance is available via phone at (864) 487-3535 ext. 258 or via email at DesignServices@EXP-Brands.com.

See Page 4 for ordering information of available remote power supplies.

		HALF MOON MARINE	
PHYSICAL	HOUSING	Stainless Steel	Brass
	LENS	Tempered Glass	
	DRIVER	Remote (Sold Separately)	
	DIMENSIONS	ø1.25" x 1.5" L x 3.6" W x 2.2" H	
	WEIGHT	0.44 Pounds	
	OPERATING TEMPERATURE	-40°F to 122°F (-40°C to 50°C)	

ELECTRICAL	POWER	3 Watts
	CURRENT	0.025 amps at 120 volts 0.011 amps at 277 volts
	CONTROL	0-10v Dimming
	CABLE	Power In
	CABLE LENGTH	59"

PHOTOMETRIC	LED	2700K	3000K	4000K
	DELIVERED LUMEN OUTPUT	up to 256 lumens	up to 275 lumens	up to 275 lumens
	EFFICACY	up to 85 lumens per watt	up to 92 lumens per watt	up to 92 lumens per watt
	LUMEN MAINTENANCE	L90 > 60,000 Hours at 77°F*		

LIGHT DISTRIBUTIONS	CCT	DATA	DISTRIBUTION / BEAM ANGLE			
			Narrow	Medium	Wide	Elliptical Horizontal
			15°	24°	45°	38° x 14°
2700K	LUMENS	255	254	256	229	
	EFFICACY	85	85	85	76	
	MAX. CANDELA	2964	1235	390	1219	
3000K	LUMENS	273	272	275	246	
	EFFICACY	91	91	92	82	
	MAX. CANDELA	3177	1322	419	1309	
4000K	LUMENS	273	272	275	246	
	EFFICACY	91	91	92	82	
	MAX. CANDELA	3177	1322	419	1309	

Values based on full output.

CERTIFICATIONS	SAFETY	ETL Certified for Wet Locations
	INGRESS PROTECTION	IP67
	IMPACT RATING	IK08
	WARRANTY	Five Year Limited Warranty

* LED life may vary under actual field conditions due to external factors. Lifetime estimates are generated from actual testing in a controlled environment. Values are conservatively derived from those numbers.

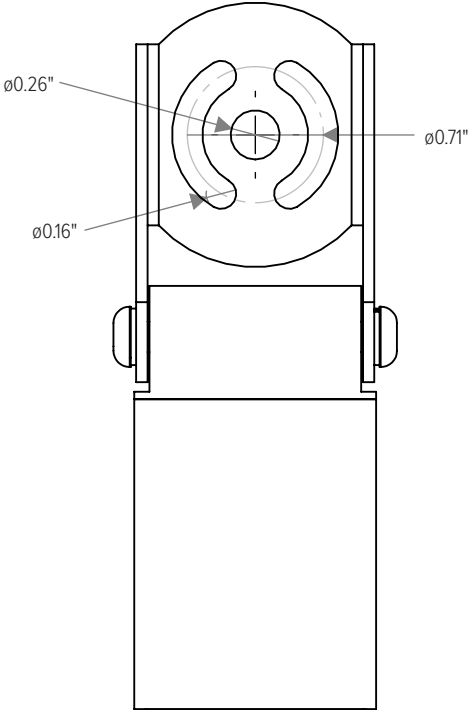
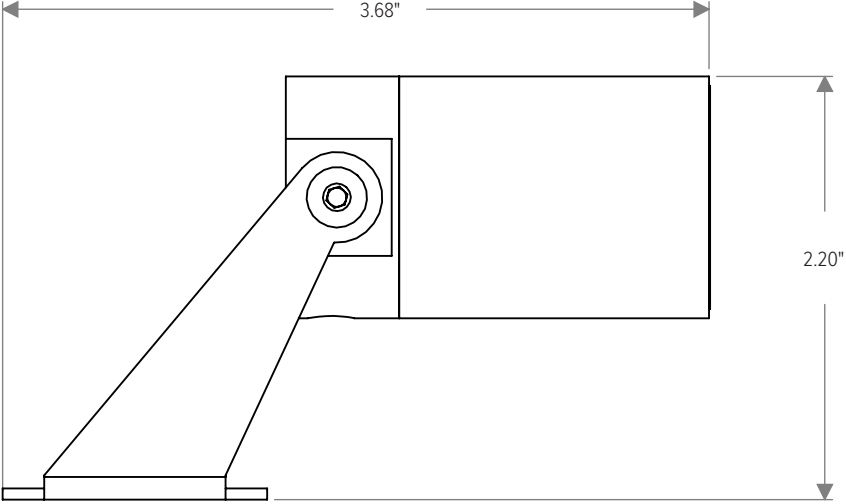
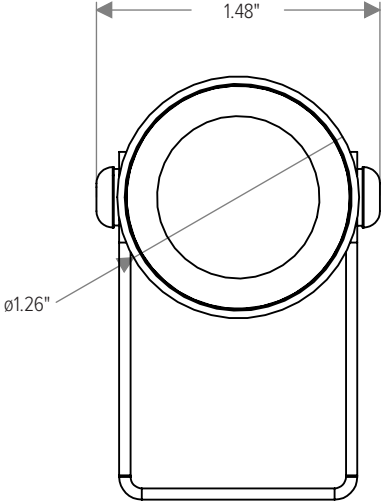
HALF MOON MARINE

Static White



DIMENSIONS

All dimensions are shown in inches unless otherwise noted.



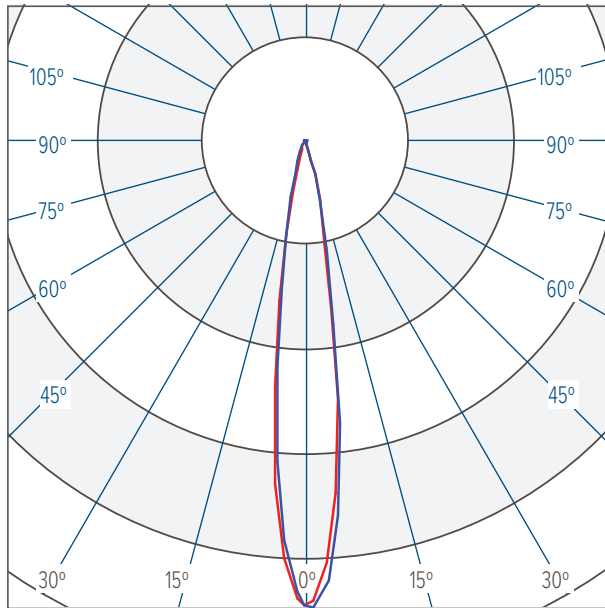
PHOTOMETRICS

NOTE: Values shown below reflect 3000/4000K CCT.
For 2700K, apply a 0.93 prorate factor.

NARROW 15°

CBCP 3177 / 273 lumens

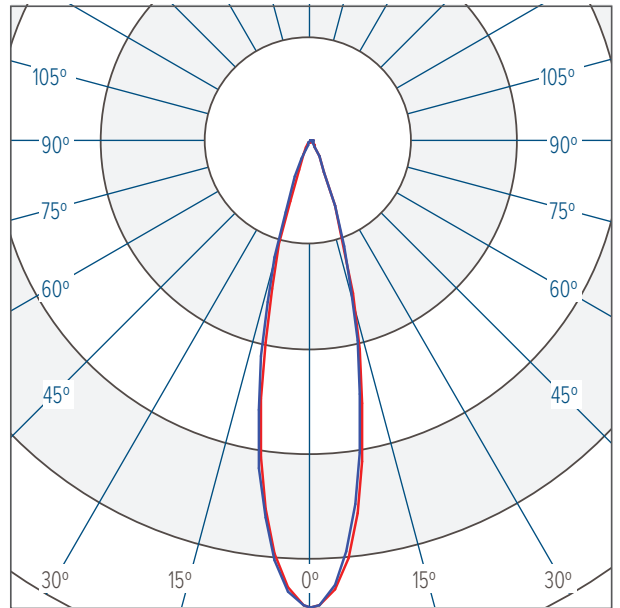
Horizontal
Vertical



MEDIUM 24°

CBCP 1322 / 272 lumens

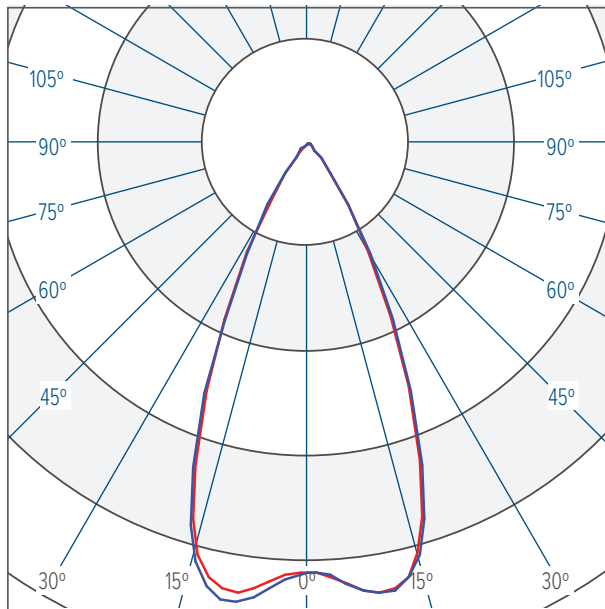
Horizontal
Vertical



WIDE 45°

CBCP 419 / 275 lumens

Horizontal
Vertical



ELLIPTICAL HORIZONTAL 38° x 14°

CBCP 1309 / 246 lumens

Horizontal
Vertical

