

HALF MOON RECESSED

Static White



DESCRIPTION

With extreme design flexibility and high aesthetic impact, the HALF MOON RECESSED is a perfect in-grade solution for illuminating paths, walkways, entrances, or distinctive illumination of architectural or landscape elements. Recess depth is 3" allowing for easy installation in any element. The power to create intense emotions through different shades and colors of light is excentuated with a two flush-mount sizes with stainless steel frame. Luminaire is IP68 rated and is resistant to submersion to a maximum depth of 4.9' for up to 30 minutes. Remote power supply is available separately.



Standard Trim 3000K



Trimless 4000K

Date: _____ Type: _____ Catalog Number: _____

Project Name: _____

ORDERING INFORMATION

LUMINAIRE						
MODEL	TRIM	CCT	CONTROL	VOLTAGE	OPTIC	OPTION
MOONHF-R Half Moon Recessed	STD Standard Trim ø50mm / 2.0"	27K 2700K	DIM 0-10v Dimming	UNV 120 - 277V via Remote Power Supply	NB Narrow 15°	LVR Internal Honeycomb Louver
	TRMLSS Trimless ø39mm / 1.5"	30K 3000K			MB Medium 24°	
		40K 4000K			WB Wide 45°	

Custom solutions are available; consult factory via phone at (864) 487-3535 ext. 258 or via email at DesignServices@EXP-Brands.com.

See Page 4 for ordering information of required and available accessories.



HALF MOON RECESSED

Static White



		HALF MOON RECESSED	
		STANDARD TRIM	TRIMLESS
PHYSICAL	HOUSING	Stainless Steel Flange and Body	
	LENS	Tempered Glass	
	LOAD BEARING CAPACITY	4409 Pounds	Walk Over Only
	DRIVER LOCATION	Remote (Sold Separately)	
	DIMENSIONS	ø1.96" x 1.8" H	ø1.5" x 1.8" H
	WEIGHT	0.99 Pounds	0.9 Pounds
	OPERATING TEMPERATURE	-40°F to 104°F (-40°C to 40°C)	

ELECTRICAL	POWER	2.5 Watts	
	INPUT VOLTAGE	120-277v via Remote Power Supply	
	CURRENT	Constant Current @ 700mA	
	CONTROL	0-10v Dimming via Remote Power Supply	
	REMOTE POWER SUPPLY	RMTPS-UNV-50-700-DIM DMX Addressable Remote Enclosed Driver Powers 1 to 15 Half Moon Luminaires Wired in Series See Page 4 for more information.	
	CABLE	Power In	
	CABLE LENGTH	39.3"	

PHOTOMETRIC	LED	2700K	3000K	4000K
	DELIVERED LUMEN OUTPUT	up to 214 lumens	up to 229 lumens	up to 229 lumens
	EFFICACY	up to 86 lumens per watt	up to 92 lumens per watt	up to 92 lumens per watt
	LUMEN MAINTENANCE	L70 > 55,000 Hours at 77°F*		

LIGHT DISTRIBUTIONS	CCT	DATA	DISTRIBUTION / BEAM ANGLE		
			Narrow	Medium	Wide
			15°	24°	45°
Values reflect delivered lumens at full output.	2700K	LUMENS	212	212	214
		EFFICACY	85	85	86
		MAX. CANDELA	2464	1030	326
	3000K	LUMENS	228	227	229
		EFFICACY	91	91	92
		MAX. CANDELA	2651	1103	349
	4000K	LUMENS	228	227	229
		EFFICACY	91	91	92
		MAX. CANDELA	2651	1103	349

CERTIFICATIONS	SAFETY	ETL Certified for Wet Locations	
	INGRESS PROTECTION	IP68	
	IMPACT RATING	IK09	
	WARRANTY	Five Year Limited Warranty	

* LED life may vary under actual field conditions due to external factors. Lifetime estimates are generated from actual testing in a controlled environment. Values are conservatively derived from those numbers.

HALF MOON RECESSED

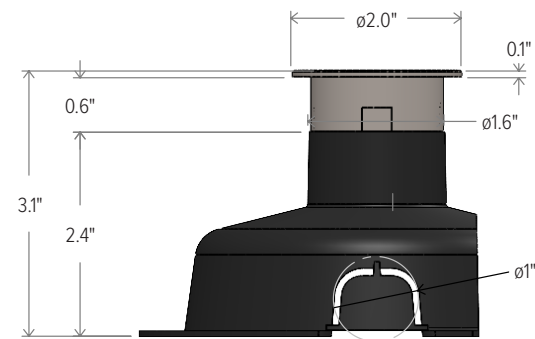
Static White



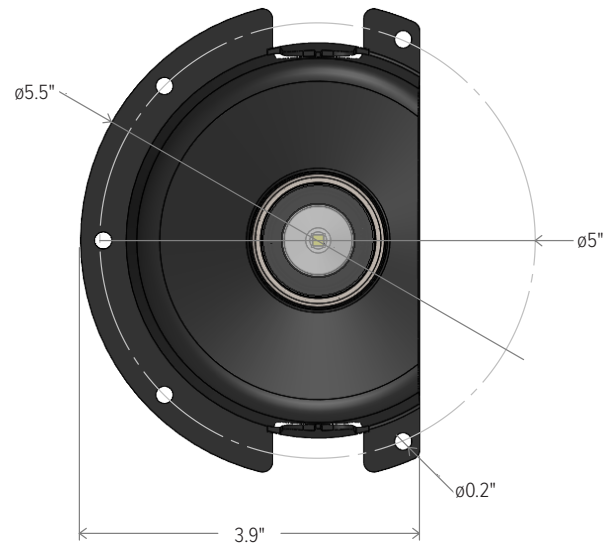
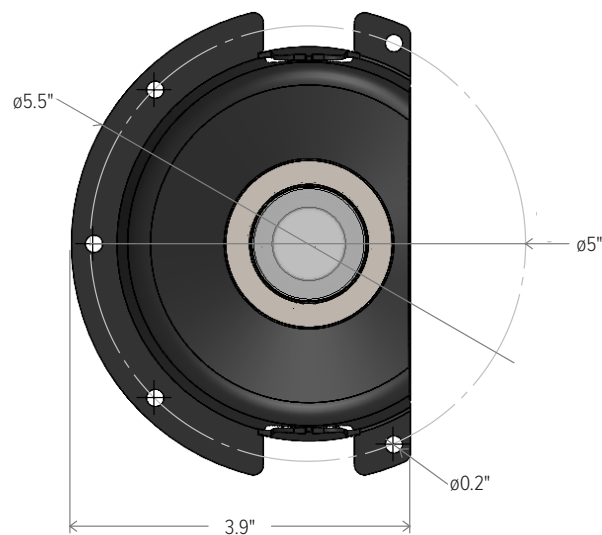
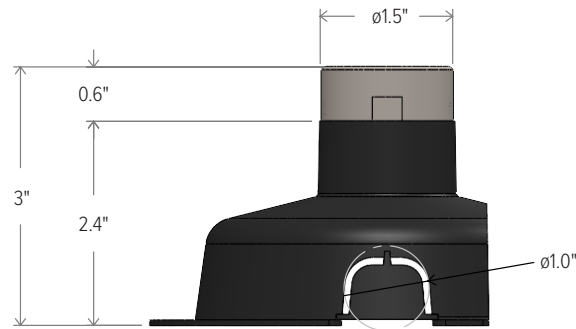
DIMENSIONS

All dimensions are shown in inches unless otherwise noted.

Half Moon Recessed - Standard Trim



Half Moon Recessed - Trimless



HALF MOON RECESSED

Static White

GRIVEN

ACCESSORIES

NOTE: Accessories are ordered and shipped separately from luminaire for field installation.



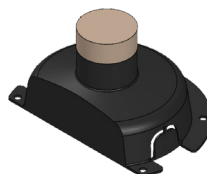
IR-CONFIG-REMOTE

Infrared DMX Configuration Remote



MOONHF-R-DRP-RBB

Drop-In Recessed Back Box



MOONHF-R-RBB

Recessed Back Box



MOONHF-R-SC

Suction Cup

Additional Control and Installation Solutions are available online; click here to view available options.

ORDERING INFORMATION

REMOTE POWER SUPPLY

MODEL

RMTPS-UNV-50-700-DIM

Remote Power Supply With Enclosure for Half Moon Recessed Static White; Powers and Controls 1 to 15 Luminaires Wired in Series*

Enclosure Dimensions: 3.9" x 7.9" x 3.2"

50 Watts

0-10v Dimming Control, Dimming Range from 100% to 1%

Universal Input Voltage Range: 120 to 277VAC

Input Frequency Range: 50 to 60Hz

Maximum Input Current: 0.65A @ 120V; 0.36A @ 230V; 0.30A @ 277V

Efficiency at Full Load: 87.5%

Power Factor at Full Load: >0.95

Surge Protection: 2kV

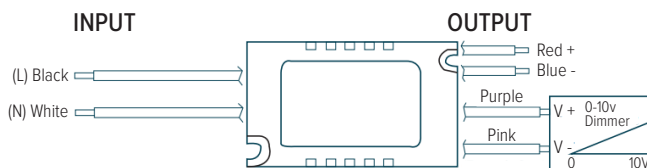
Operating Ambient Temperature: -20° C to 50° C

IP66 / IK09 Rated

*Note: To individually control separate luminaires, one driver per luminaire is required.



Driver Enclosure



CUSTOMIZE YOUR EXPERIENCE.

At Experience Brands, we believe every space deserves unique lighting elements. We proudly specialize in crafting solutions that reflect your personal vision. Our expert team is here to collaborate with you to design and implement customized features that elevate your environment.

Ready to Get Started? Email us at: DesignServices@exp-brands.com

HALF MOON RECESSED

Static White

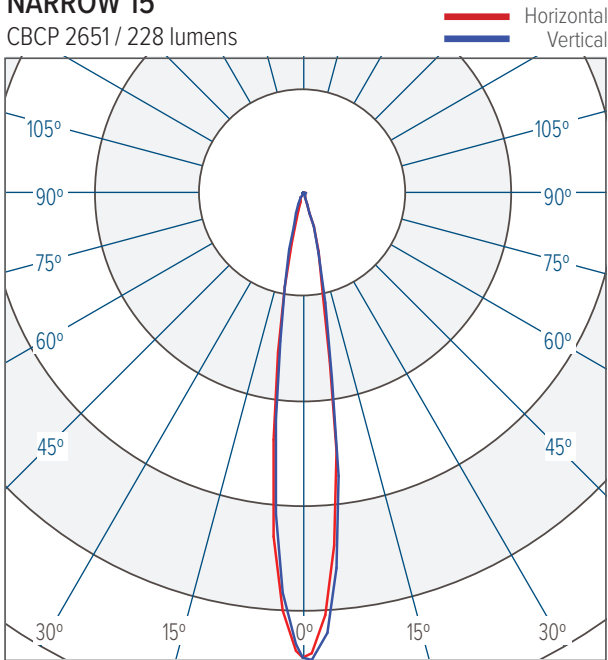


PHOTOMETRICS

NOTE: Values shown below reflect 3000K and 4000K CCT.
For 2700K, apply a 0.93 prorate factor for Narrow and Medium Beams, or 1.00 for Wide Beam.

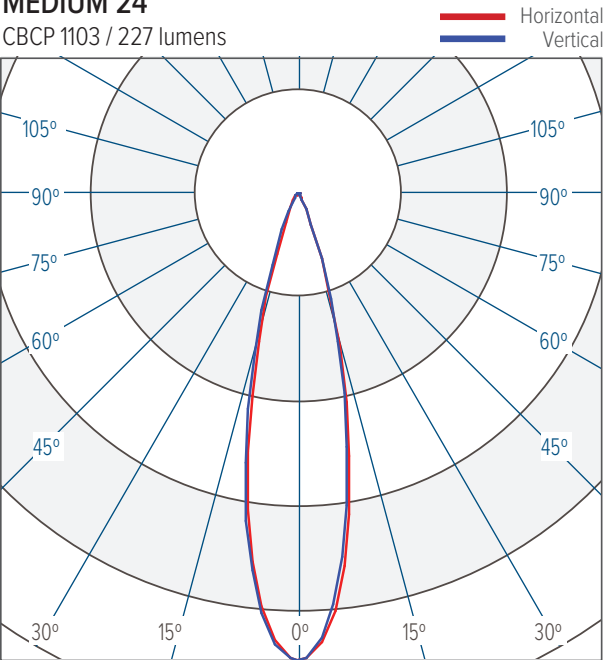
NARROW 15°

CBCP 2651 / 228 lumens



MEDIUM 24°

CBCP 1103 / 227 lumens



WIDE 45°

CBCP 349 / 229 lumens

