

HALF MOON SURFACE

Static White

GRIVEN

DESCRIPTION

HALF MOON is a remarkably compact luminaire designed to elevate outdoor environments with subtlety and sophistication by creating exquisite accent lighting effects. Its external power supply unit allows for easy installation even in tight spaces while enabling the simultaneous control of multiple units. With an opaline diffuser to precisely highlight exterior elements, Half Moon enhances the beauty of landscape and architectural details. It is available in five trendy finishes with an elegant brass or monochrome swivel, available with a sleek cover for convenient wall or floor installation.



Date: _____ Type: _____ Catalog Number: _____

Project Name: _____

ORDERING INFORMATION

LUMINAIRE

MODEL	SWIVEL	CCT	CONTROL	CABLE	VOLTAGE	OPTIC	FINISH	OPTION
MOONHF-SF Half Moon Surface	BS Brass Swivel	27K 2700K	DIM 0-10v Dimming	P Power In (39.3")	UNV 120 - 277v via Remote Power Supply	NB Narrow 15°	AG Anthracite Grey	AST Anti-Saline Treatment
	OT One Tone Finish	30K 3000K				MB Medium 24°	BL Black	
		40K 4000K				WB Wide 45°	SG Griven Silver Grey	
						ELH Elliptical Wide 38° x 14°	OG Olive Grey	
							WH White	
							CC Custom RAL Color	

Custom solutions are available; consult factory via phone at (864) 487-3535 ext. 258 or via email at DesignServices@EXP-Brands.com.

See Page 4 for ordering information of required and available accessories.



EXPERIENCE
BRANDS

www.Griven-USA.com

For other Experience® Brands companies, please visit www.ExperienceBrandsUSA.com.

In a continuing effort to offer the best product possible, we reserve the right to change, without notice, specifications or materials. Technical specification sheets that appear online are the most recent ones available. *Consult the factory to verify current status of BAA/TAA/BABAA compliance.

1/5

Rev 20250306

HALF MOON SURFACE

Static White



HALF MOON SURFACE		
PHYSICAL	HOUSING	Die-Cast Aluminum
	LENS	Opaline Tempered Glass
	SWIVEL	Brass
	DRIVER LOCATION	Remote (Sold Separately)
	DIMENSIONS (90° Housing Orientation)	3.91" L x ø1.26" (housing)
	WEIGHT	0.44 Pounds
	OPERATING TEMPERATURE	-40°F to 122°F (-40°C to 50°C)

ELECTRICAL	POWER	3 Watts
	INPUT VOLTAGE	120-277v via Remote Power Supply
	CURRENT	Constant Current @ 900mA
	CONTROL	0-10v Dimming with Remote Driver
	REMOTE POWER SUPPLY	RMTPS-UNV-50-900-DIM DMX Addressable Remote Enclosed Driver Powers 1 to 15 Half Moon Luminaires Wired in Series See Page 4 for more information.
	CABLE	Power In
	CABLE LENGTH	39.3"

PHOTOMETRIC	LED	2700K	3000K	4000K
	DELIVERED LUMEN OUTPUT	up to 256 lumens	up to 275 lumens	up to 275 lumens
	EFFICACY	up to 85 lumens per watt	up to 92 lumens per watt	up to 92 lumens per watt
	LUMEN MAINTENANCE	L90 > 60,000 Hours at 77°F*		
	LIGHT CONTROL ACCESSORIES	Visor Available		

LIGHT DISTRIBUTIONS	CCT	DATA	DISTRIBUTION / BEAM ANGLE			
			Narrow	Medium	Wide	Elliptical
			15°	24°	45°	38° X 14°
Values reflect delivered lumens at full output.	2700K	LUMENS	255	254	256	229
		EFFICACY	85	85	85	76
		MAX. CANDELA	2964	1235	390	1216
	3000K	LUMENS	273	272	275	246
		EFFICACY	91	91	92	82
		MAX. CANDELA	3177	1322	419	1306
	4000K	LUMENS	273	272	275	246
		EFFICACY	91	91	92	82
		MAX. CANDELA	3177	1322	419	1306

CERTIFICATIONS	SAFETY	ETL Certified for Wet Locations
	INGRESS PROTECTION	IP67
	IMPACT RATING	IK07
	WARRANTY	Five Year Limited Warranty

* LED life may vary under actual field conditions due to external factors. Lifetime estimates are generated from actual testing in a controlled environment. Values are conservatively derived from those numbers.

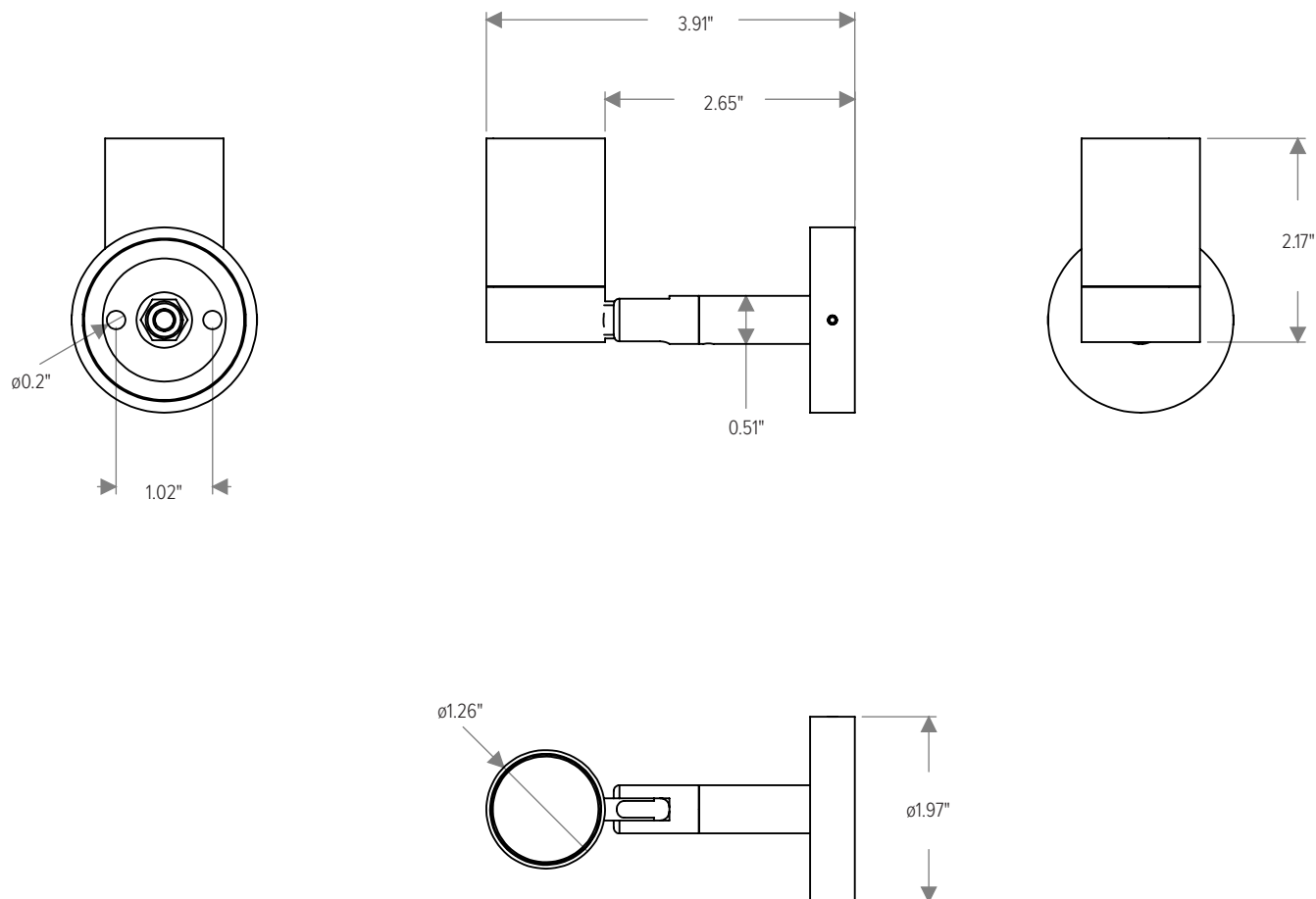
HALF MOON SURFACE

Static White

GRIVEN 

DIMENSIONS

All dimensions are shown in inches unless otherwise noted.



CUSTOMIZE YOUR **EX**PERIENCE.

At Experience Brands, we believe every space deserves unique lighting elements. We proudly specialize in crafting solutions that reflect your personal vision. Our expert team is here to collaborate with you to design and implement customized features that elevate your environment.

Ready to Get Started? Email us at: DesignServices@exp-brands.com

HALF MOON SURFACE

Static White

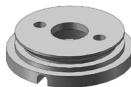


ACCESSORIES

NOTE: Accessories are ordered and shipped separately from luminaire for field installation.
-XX* indicates a painted accessory. See bottom of page for painted accessory ordering information.



MOONHF-VISOR-XX*
Visor



MOONHF-WLMT-XX*
Wall Mount Plate
for Side-Run Cable




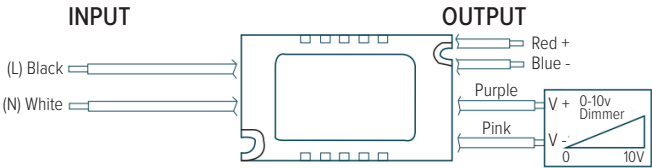
MOONHF-PLMT-XX*
Pole/Tree Mount Kit

Additional Control and Installation Solutions are available online; click here to view available options.

ORDERING INFORMATION

PAINTED ACCESSORIES		
MODEL	FINISH (*-XX)	OPTION
MOONHF-VISOR Visor	AG Anthracite Grey	AST Anti-Saline Treatment
MOONHF-WLMT Wall Mount Plate	BL Black	
MOONHF-PLMT Pole/Tree Mount Kit	SG Griven Silver Grey	
	OG Olive Grey	
	WH White	
	CC Custom RAL Color	

REMOTE POWER SUPPLY (Required, Ordered Separately)	
MODEL	
RMTPS-UNV-50-900-DIM Remote Power Supply With Enclosure for Half Moon Surface Static White; Powers and Controls 1 to 15 Luminaires Wired in Series* Enclosure Dimensions: 3.9" x 7.9" x 3.2" 50 Watts 0-10v Dimming Control, Dimming Range from 100% to 1% Universal Input Voltage Range: 120 to 277VAC Input Frequency Range: 50 to 60Hz Maximum Input Current: 0.65A @ 120V; 0.36A @ 230V; 0.30A @ 277V Efficiency at Full Load: 87.5% Power Factor at Full Load: >0.95 Surge Protection: 2kV Operating Ambient Temperature: -20° C to 50° C IP66 / IK09 Rated *Note: To individually control separate luminaires, one driver per luminaire is required.	 Driver Enclosure



HALF MOON SURFACE

Static White



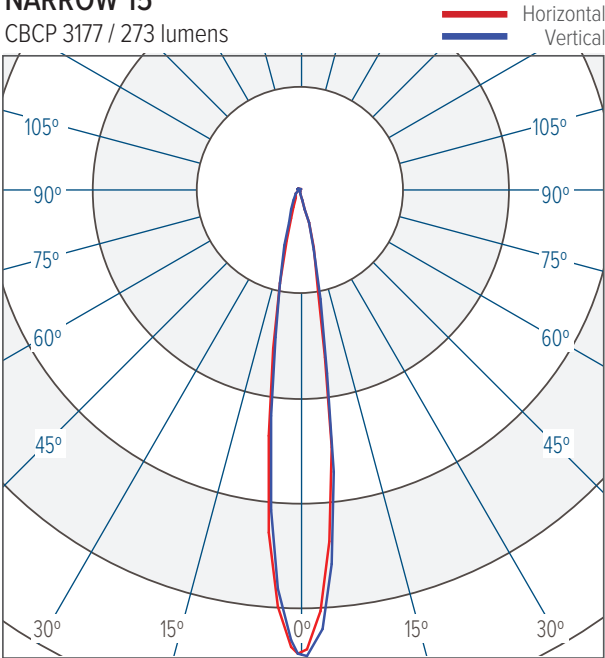
PHOTOMETRICS

NOTE: Values shown below reflect 3000K and 4000K CCT.

For 2700K, apply a 0.93 prorate factor.

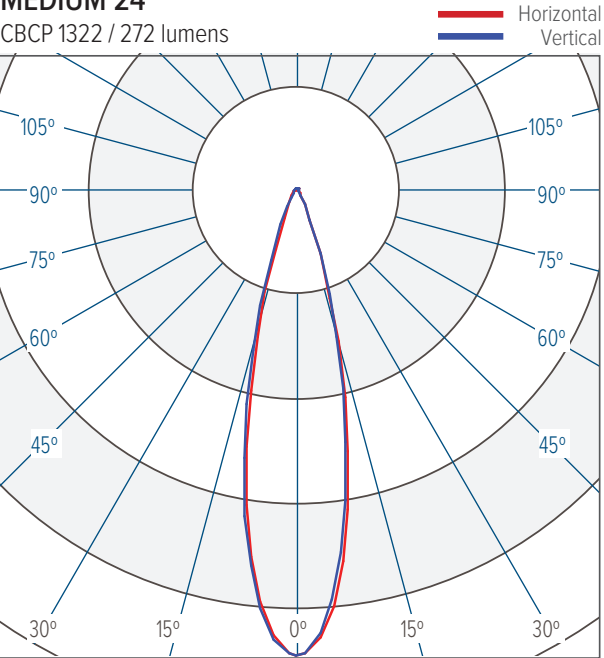
NARROW 15°

CBCP 3177 / 273 lumens



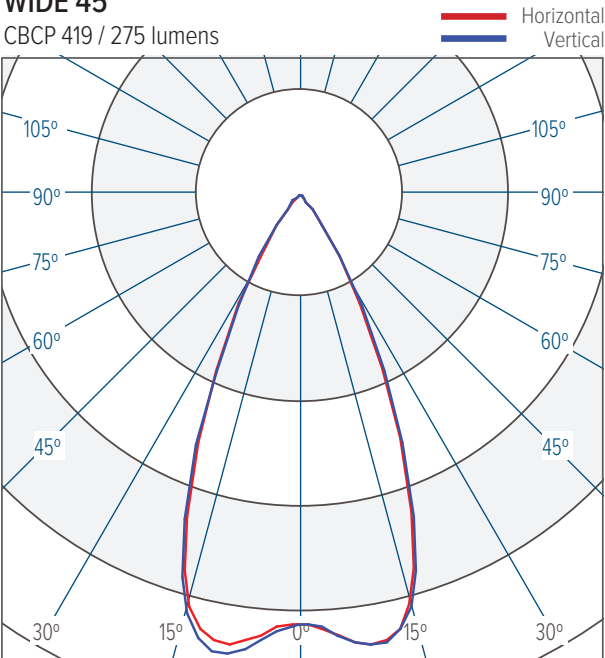
MEDIUM 24°

CBCP 1322 / 272 lumens



WIDE 45°

CBCP 419 / 275 lumens



ELLPTICAL 38° x 14°

CBCP 1306 / 246 lumens

