

DESCRIPTION

With its appealing design and remarkably slim profile, **MARS MC RGBW** seamlessly integrates into various architectural environments. MARS offers exceptional performance within a stylish and refined form factor. This versatile luminaire is designed to meet both aesthetic and functional requirements for numerous exterior lighting applications. The luminaire's superb optical efficiency and high-quality LEDs combine to provide an efficacy of up to 50 lumens per watt. The standard choice of either 3000K or 4000K for the white channel enables a broad range of color shades and tones, and the Multi-Chip LED blends colors flawlessly.



Date: _____ Type: _____ Catalog Number: _____

Project Name: _____

ORDERING INFORMATION

LUMINAIRE							
MODEL	CCT	CONTROL	CABLE	VOLTAGE	OPTIC	FINISH	OPTION
MARSMC Mars MC	RGBW30K RGBW 3000K	DMX-RDM DMX/RDM	S Power in, DMX in, DMX out (59")	UNV 120 - 277V	SP Spot 7°	AG Anthracite Grey	AST Anti-Saline Treatment
MARSMCPE Mars MC Polar Edition	RGBW40K RGBW 4000K		M Monocable Only (19.7")		NB Narrow 12°	BL Black	3G 3G Mounting Yoke
			C Monocable with connectors (19.7")		MB Medium 24°	SG Griven Silver Grey	
					WB Wide 43°	WH White	
						CC Custom RAL Color	

*Consult factory for availability of optional spreading diffusors.

LIGHT CONTROL ACCESSORIES		*XX- ACCESSORY FINISHES	
AL8010-XX*	Visor	AG	Anthracite Grey
AL8012-XX*	Snoot	BL	Black
AL1321†	Infrared Configuration Remote	SG	Griven Silver Grey
		WH	White
		CC	Custom RAL Color

† Unless an RDM compatible control is used, the AL1321 Infrared Configuration Remote must be ordered.



AL1321
Infrared Configuration Remote



AL8012-XX*
Snoot



AL8210-XX*
Visor

		MARS MC RGBW
PHYSICAL	HOUSING	Die-Cast Aluminum
	HOUSING ORIENTATION ANGLE	From -35° to +180°
	OVERALL DIMENSIONS	15.2" L x 3.7" W x 15.1" H
	WEIGHT	17.8 lbs
	OPERATING TEMPERATURE	-40°C to 50°C (-40°F to 122°F)

ELECTRICAL	POWER CONSUMPTION	95 Watts Maximum
	AMPERAGE	0.79 A @ 120VAC 0.34 A @ 277VAC
	CONTROL	DMX/RDM
	CABLE LENGTHS	S-Type Cable: 59" M-Type Cable: 19.7" C-Type Cable: 19.7"

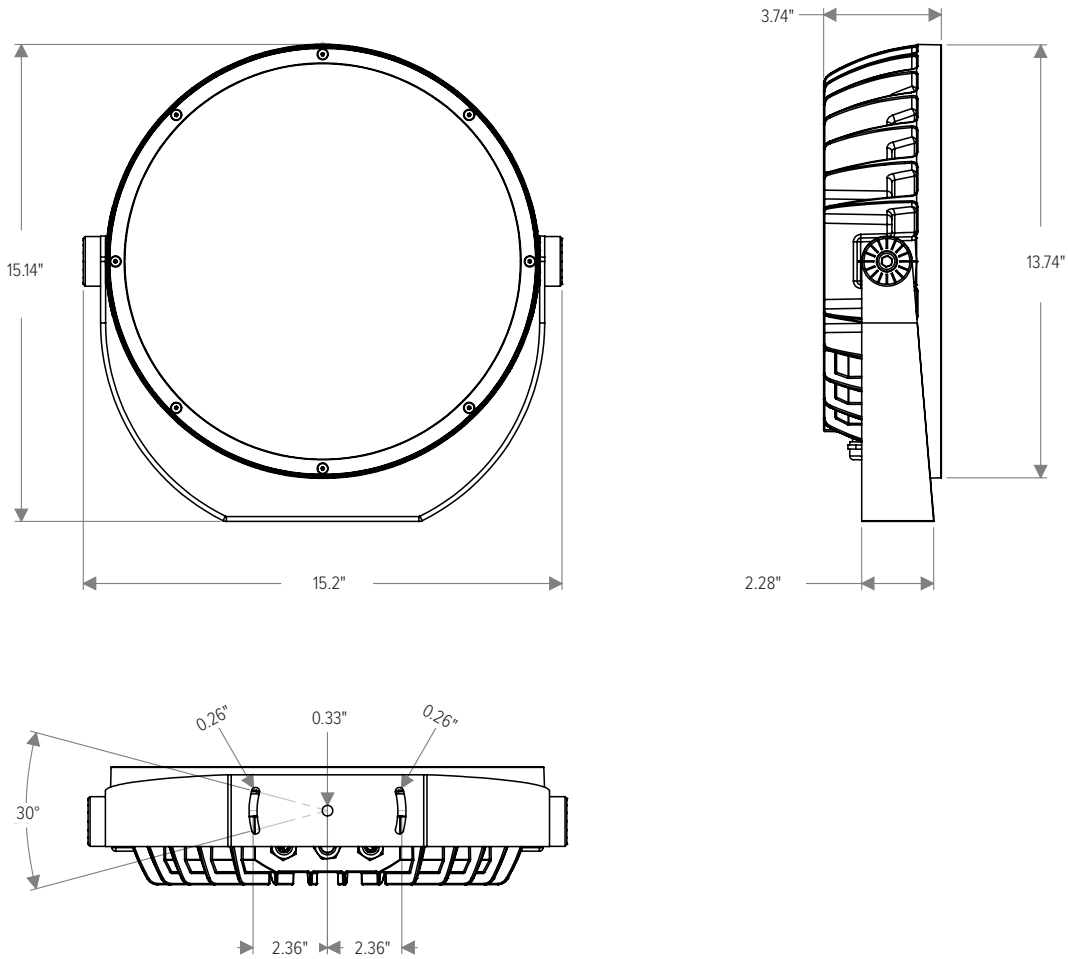
PHOTOMETRIC	LED	RGBW (3000K or 4000K White)
	# LEDES	14
	DELIVERED LUMEN OUTPUT	Up to 4737 Lumens
	EFFICACY	Up to 50 Lumens per Watt
	LUMEN MAINTENANCE	L70 > 50,000 Hours
	# DISTRIBUTIONS	4
	LIGHT CONTROL ACCESSORIES	Visor, Snoot
	COLOR RENDERING INDEX	> 80 (Consult factory for availability of custom CRI options.)

LIGHT DISTRIBUTIONS	DISTRIBUTION	BEAM ANGLE	RGBW 3000K			RGBW 4000K		
			LUMENS	EFFICACY	MAX. CANDELA	LUMENS	EFFICACY	MAX. CANDELA
Values based on full output.	SPOT	7°	4169	44	160569	4737	50	182446
	NARROW	12°	4059	43	61003	4612	49	69314
	MEDIUM	24°	3878	41	20869	4407	46	23716
	WIDE	43°	3761	40	6929	4273	45	7872

CERTIFICATIONS	SAFETY	ETL Certification Pending
	INGRESS PROTECTION	IP67
	IMPACT RATING	IK09
	WARRANTY	5 Year Limited Warranty

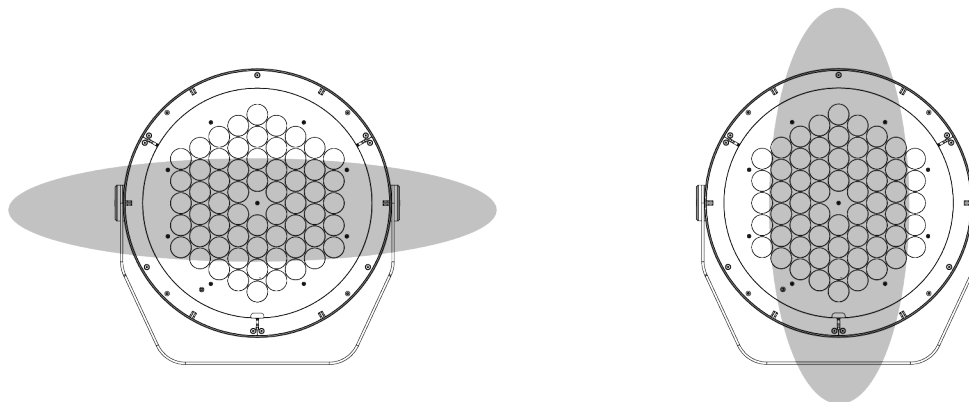
DIMENSIONS

All dimensions are shown in inches unless otherwise noted.



OPTIC ORIENTATION

Consult factory for availability of optional spreading diffusers.



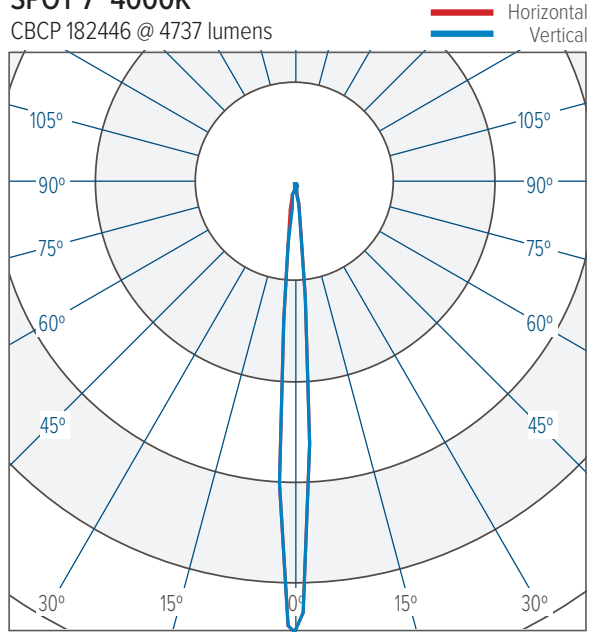
HORIZONTAL MODE (Standard)

VERTICAL MODE (On Request)

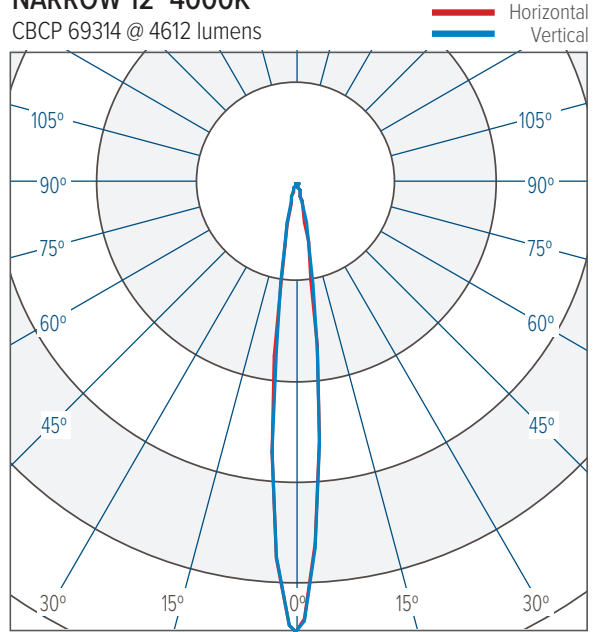
PHOTOMETRICS

NOTE: Values shown below reflect 4000K CCT. For 3000K values, apply a 0.88 pro rate factor.

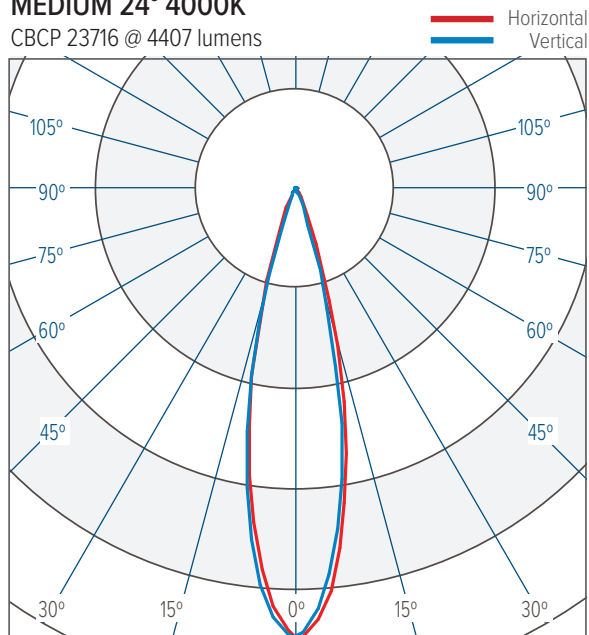
SPOT 7° 4000K
CBCP 182446 @ 4737 lumens



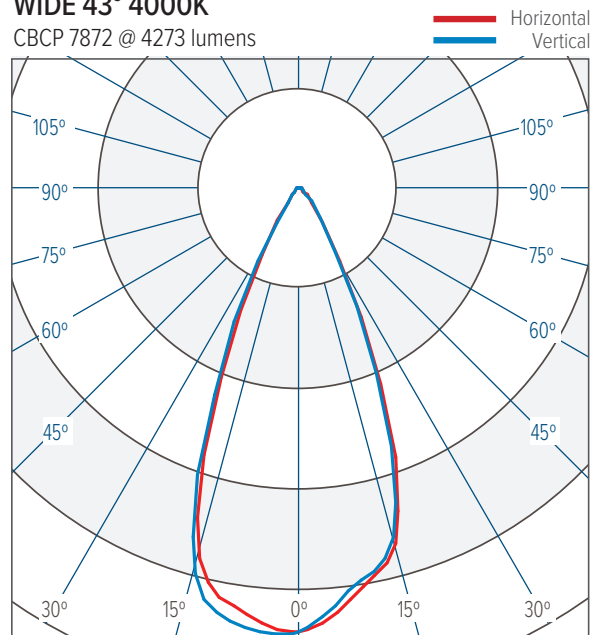
NARROW 12° 4000K
CBCP 69314 @ 4612 lumens



MEDIUM 24° 4000K
CBCP 23716 @ 4407 lumens



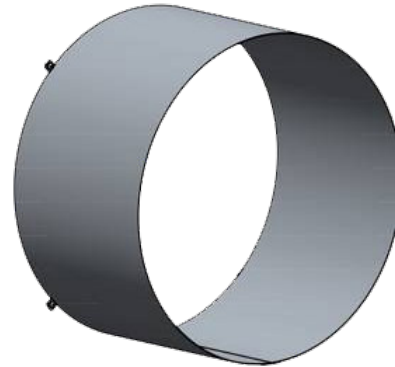
WIDE 43° 4000K
CBCP 7872 @ 4273 lumens



ACCESSORIES



AL8010-XX*
Visor



AL8012-XX*
Snoot



AL81321
Infrared Configuration Remote

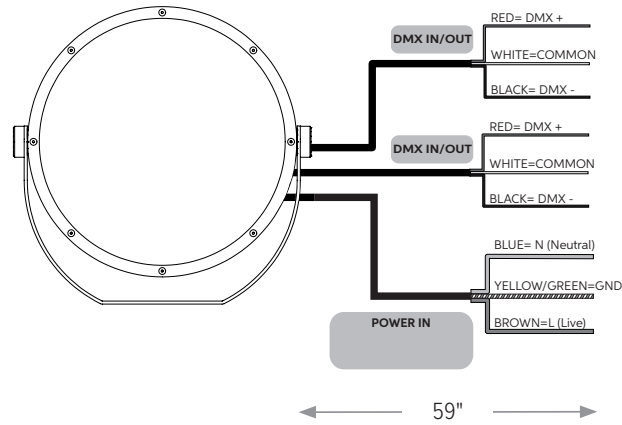
Note: Unless an RDM compatible control is used, the AL1321 Infrared Configuration Remote must be ordered.

***XX- ACCESSORY FINISHES**

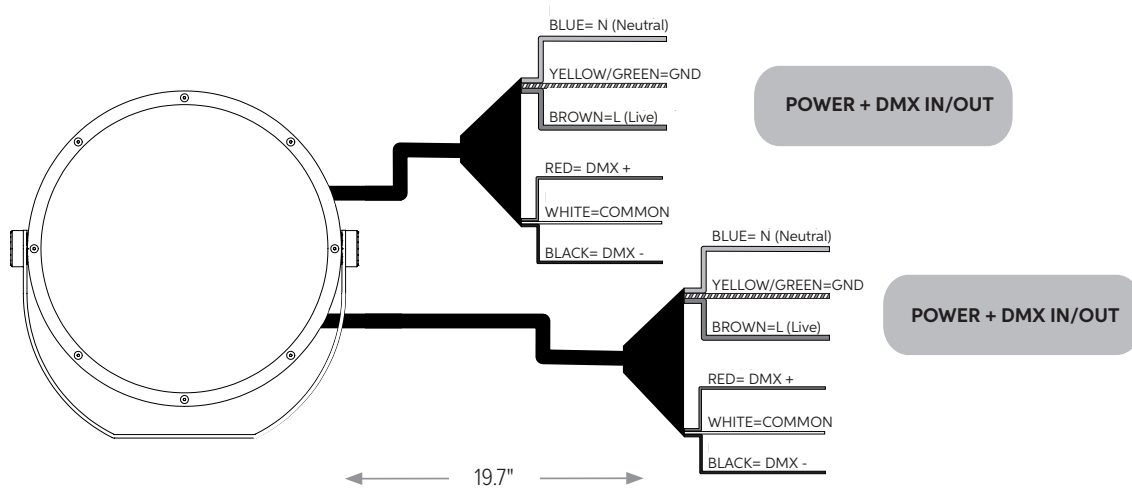
- AG Anthracite Grey
- BL Black
- SG Griven Silver Grey
- WH White
- CC Custom RAL Color

CONNECTIONS

"S" Type Cable (Power In, DMX In, DMX Out)



"M" Type Cable (Monocable Without Connectors)



"C" Type Cable (Monocable With Connectors)

