

DESCRIPTION

Designed to elevate landscapes and architectural features in both residential and commercial spaces, **MOON BOLLARD** is an advanced LED luminaire offering nuanced accent lighting to evoke emotions through soft lighting effects. This adaptable luminaire provides decorative and functional lighting, ideal for paths, gardens, and architectural elements in various settings. With five finish options, a brass swivel, and sleek installation, it's a versatile choice. Additional versions provide design flexibility, while various optics create diverse visual effects. The external power supply enables easy management of multiple units.



Date: \_\_\_\_\_ Type: \_\_\_\_\_ Catalog Number: \_\_\_\_\_

Project Name: \_\_\_\_\_

ORDERING INFORMATION

LUMINAIRE									
MODEL	HEIGHT	SWIVEL	CCT	CONTROL	CABLE	VOLTAGE	OPTIC	FINISH	OPTION
MOON-BL Moon Bollard	750 29.5" / 750mm	BS Brass Swivel	RGBW30K RGBW 3000K	DMX-RDM DMX/RDM	M Monocable Without Connectors (39.3")	UNV 120 - 277V via Remote Power Supply	NB Narrow 14°	AG Anthracite Grey	AST Anti-Saline Treatment
	500 19.7" / 500mm	LH Lockable Head	RGBW40K RBGW 4000K				MB Medium 23°	BL Black	LVR Internal Honeycomb Louver
	250 9.8" / 250mm	OT One Tone Finish	DW Dynamic White (3000K to 6500K)				WB Wide 35°  EW Extra Wide 56°	SG Griven Silver Grey  OG Olive Grey  WH White  CC Custom RAL Color	

Custom solutions are available; consult factory via phone at (864) 487-3535 ext. 258 or via email at DesignServices@EXP-Brands.com.

See Page 4-5 for ordering information of required and available accessories.



		MOON BOLLARD		
PHYSICAL	HOUSING	Die-Cast Aluminum		
	LENS	Tempered Glass		
	SWIVEL	Brass (One-Tone Finish) or Aluminum (Lockable Head)		
	DRIVER LOCATION	Remote (Sold Separately)		
	DIMENSIONS <small>(90° Housing Orientation)</small>	750mm	500mm	250mm
		ø3.94" Base x 29.53" H	ø3.94" Base x 19.69" H	ø3.94" Base x 9.85" H
	OPERATING TEMPERATURE	-40°F to 122°F (-40°C to 50°C)		

ELECTRICAL	POWER	9 Watts	
	INPUT VOLTAGE	120-277v via Remote Power Supply	
	CURRENT	Constant Voltage @ 24VDC	
	CONTROL	Integral DMX/RDM Control	
	REMOTE POWER SUPPLY	RMTPS-UNV-200-24-N: 200 Watts; Powers up to 18 Luminaires RMTPS-UNV-100-24-N: 100 Watts; Powers up to 9 Luminaires See Page 5 for more information.	
	CABLE	Power & DMX Cable Without Connectors	
	CABLE LENGTH	39.3"	

PHOTOMETRIC	LED	Dynamic White (3000K-6500K)	RGBW 3000K	RGBW 4000K
	DELIVERED LUMEN OUTPUT	up to 413 lumens	up to 222 lumens	up to 242 lumens
	EFFICACY	up to 46 lumens per watt	up to 25 lumens per watt	up to 27 lumens per watt
	LUMEN MAINTENANCE	L70 > 100,000 Hours at 77°F*		
	LIGHT CONTROL ACCESSORIES	Snoot, Visor, Diffusers, Honeycomb Louvers Available		

LIGHT DISTRIBUTIONS	DISTRIBUTION	BEAM ANGLE	LUMENS	EFFICACY	MAX. CANDELA
	DYNAMIC WHITE				
	Narrow	14°	413	46	5514
	Medium	23°	329	37	1519
	Wide	35°	336	37	808
	Extra Wide	56°	339	38	402
	RGBW 3000K				
	Narrow	14°	222	25	2964
	Medium	23°	178	20	822
	Wide	35°	181	20	435
	Extra Wide	56°	183	20	217
	RGBW 4000K				
	Narrow	14°	242	27	3225
	Medium	23°	193	21	892
	Wide	35°	197	22	473
	Extra Wide	56°	199	22	236
Values reflect delivered lumens at full output.					

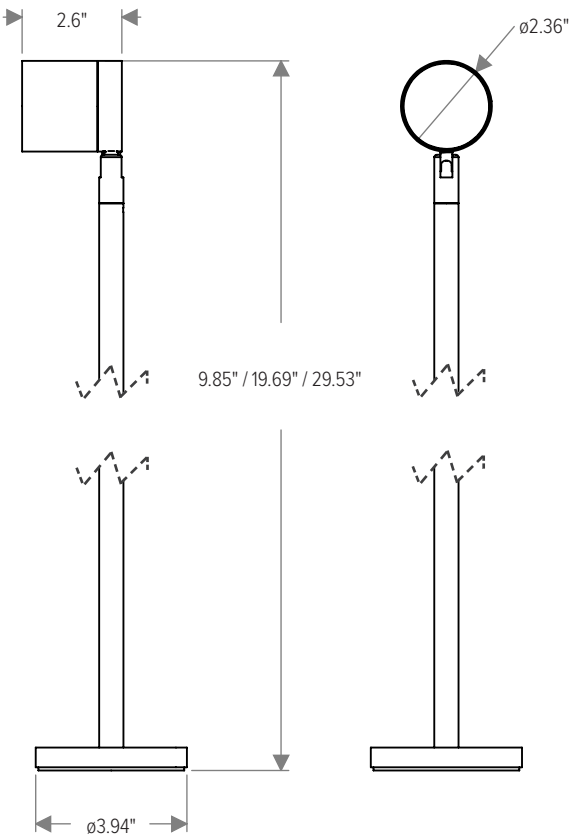
CERTIFICATIONS	SAFETY	ETL Certified for Wet Locations	
	INGRESS PROTECTION	IP67	
	IMPACT RATING	IK08	
	WARRANTY	Five Year Limited Warranty	

\* LED life may vary under actual field conditions due to external factors. Lifetime estimates are generated from actual testing in a controlled environment. Values are conservatively derived from those numbers.

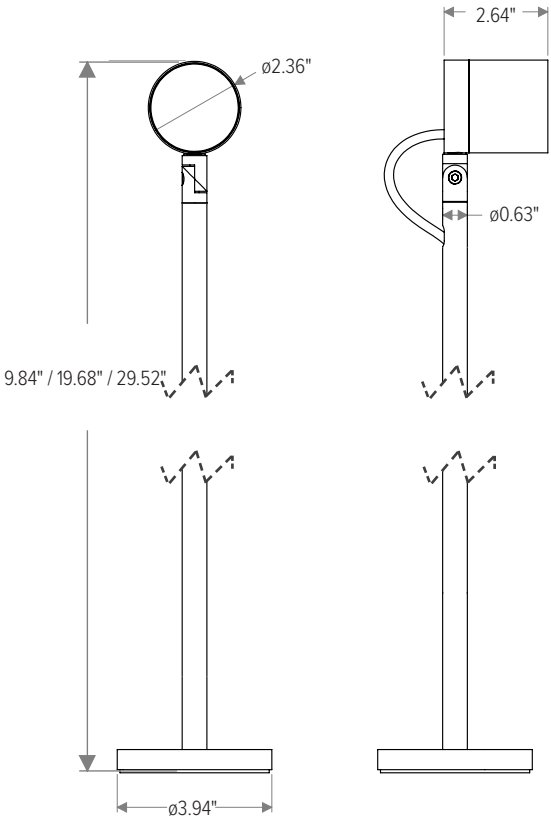
DIMENSIONS

All dimensions are shown in inches unless otherwise noted.

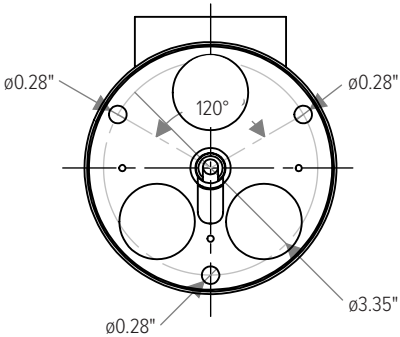
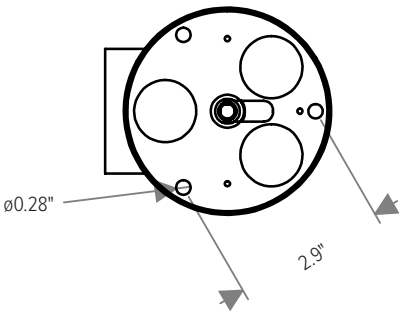
*Moon Bollard with Brass Swivel or One-Tone Finish*



*Moon Bollard with Lockable Head*



MOUNTING



ACCESSORIES

NOTE: Accessories are ordered and shipped separately from luminaire for field installation.  
-XX\* indicates a painted accessory. See bottom of page for painted accessory ordering information.

OPTICAL ACCESSORIES- FOR USE WITH ACCESSORY HOLDER (MOON-ACC-HLDR)



MOON-ACC-HLDR-XX\*  
Accessory Holder



MOON-ACC-RFCTR-EL  
Refractor for Elliptical Distribution



MOON-ACC-DFG  
Diffuser Glass



MOON-ACC-PRG  
Prismatic Glass



MOON-ACC-SNOOT-XX\*  
Snoot



MOON-ACC-VISOR-XX\*  
Visor

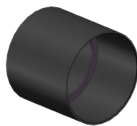


MOON-ACC-LVR  
External Honeycomb Louver

ADDITIONAL ACCESSORIES



IR-CONFIG-REMOTE  
Infrared DMX Configuration Remote



MOON-SNOOT-XX\*  
Snoot



MOON-VISOR-XX\*  
Visor



MOON-BL-FRMWK  
Formwork



MOON-BL-MK  
Mounting Kit (Anchor Bolts)

Additional Control and Installation Solutions are available online; [click here to view available options.](#)

ORDERING INFORMATION

PAINTED ACCESSORIES

MODEL		FINISH (*-XX)		OPTION	
MOON-ACC-HLDR	Accessory Holder	AG	Anthracite Grey	AST	Anti-Saline Treatment
MOON-ACC-SNOOT	Accessory Holder Snoot	BL	Black		
MOON-ACC-VISOR	Accessory Holder Visor	SG	Griven Silver Grey		
MOON-SNOOT	Snoot	OG	Olive Grey		
MOON-VISOR	Visor	WH	White		
		CC	Custom RAL Color		

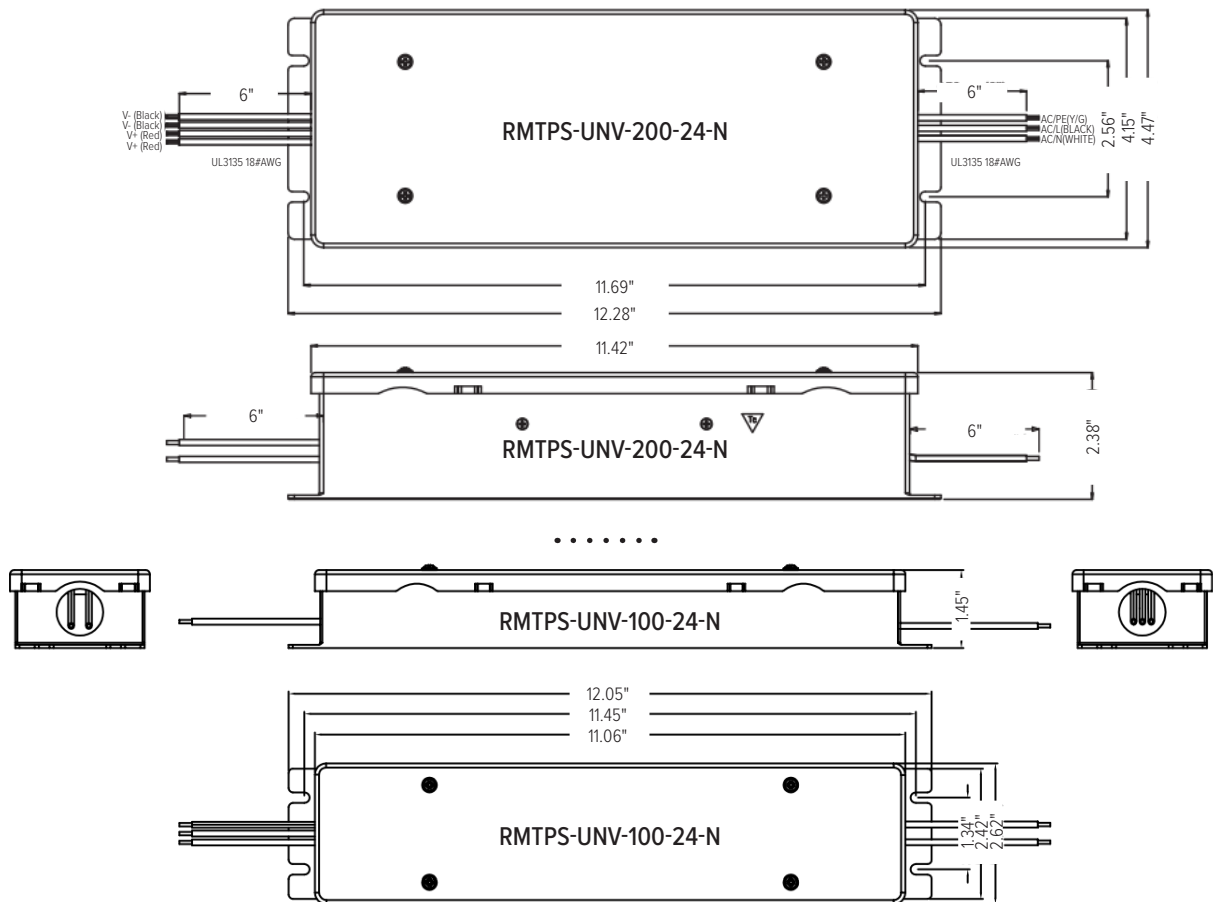
ACCESSORIES (continued)

REMOTE POWER SUPPLY (Required, Ordered Separately)

MODEL

**RMTPS-UNV-200-24-N**  
Remote Power Supply for Moon Bollard Dynamic White/RGBW; Powers 1 to 18 Luminaires  
Enclosure Dimensions: 12.28" L x 4.47" W x 2.38" H  
200 Watts; Dual Channel (100 Watts per Channel)  
24 Volts  
On/Off Control  
Universal Input Voltage Range: 90 to 305 VAC  
Input Frequency Range: 47 to 63Hz  
Efficiency at Full Load: 80%  
Power Factor at Full Load: >0.9  
Operating Ambient Temperature: -40°C to 60°C  
IP68 Rated

**RMTPS-UNV-100-24-N**  
Remote Power Supply for Moon Bollard Dynamic White/RGBW; Powers 1 to 9 Luminaires  
Enclosure Dimensions: 12.05" L x 2.62" W x 1.45" H  
100 Watts; Single Channel  
24 Volts  
On/Off Control  
Universal Input Voltage Range: 100 to 277 VAC  
Input Frequency Range: 50 to 60Hz  
Efficiency at Full Load: 92%  
Power Factor at Full Load: >0.9  
Operating Ambient Temperature: -40°C to 60°C  
IP68 Rated



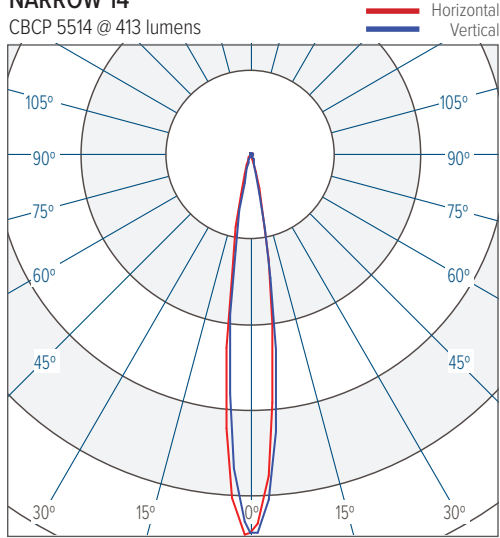
## PHOTOMETRICS

NOTE: Values shown below reflect Dynamic White CCT.

For RGBW 3000K, apply a 0.54 prorate factor. For RGBW 4000K, apply a 0.59 prorate factor.

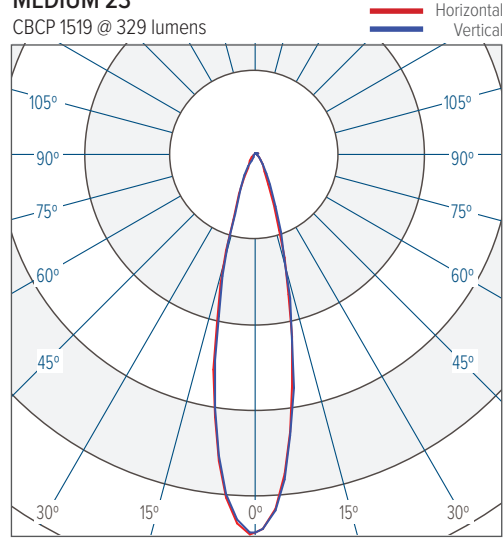
### NARROW 14°

CBCP 5514 @ 413 lumens



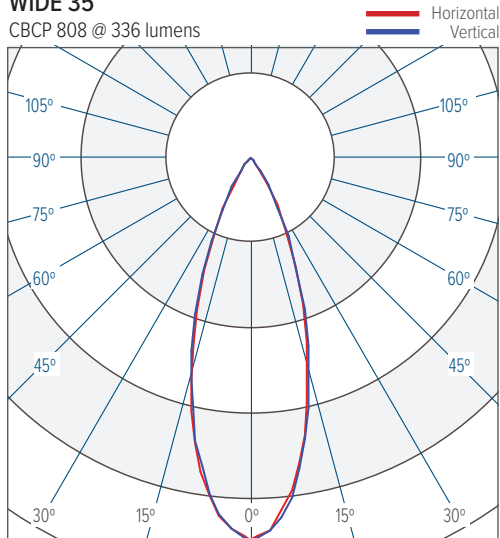
### MEDIUM 23°

CBCP 1519 @ 329 lumens



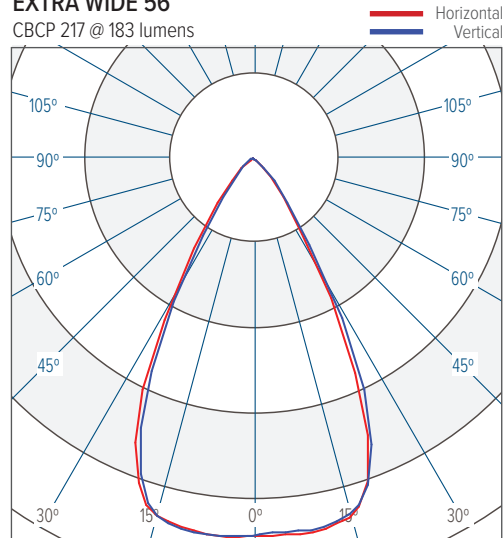
### WIDE 35°

CBCP 808 @ 336 lumens



### EXTRA WIDE 56°

CBCP 217 @ 183 lumens



## CUSTOMIZE YOUR EXPERIENCE.

At Experience Brands, we believe every space deserves unique lighting elements. We proudly specialize in crafting solutions that reflect your personal vision. Our expert team is here to collaborate with you to design and implement customized features that elevate your environment.

**Ready to Get Started?** Email us at: [DesignServices@exp-brands.com](mailto:DesignServices@exp-brands.com)

RGBW DMX MODES			
MODE	CHANNEL	FUNCTION	VALUE
Mode 4 Channel- "RGBW 4CH"			
#1	1	0-100% Red	0-255
	2	0-100% Green	0-255
	3	0-100% Blue	0-255
	4	0-100% White	0-255
Mode 5 Channel- "RGBW 5CH"			
#2	1	0-100% Red	0-255
	2	0-100% Green	0-255
	3	0-100% Blue	0-255
	4	0-100% White	0-255
	5	0-100% Dimmer	0-255
Mode 6 Channel- "RGBW 6CH"			
#3	1	0-100% Red	0-255
	2	0-100% Green	0-255
	3	0-100% Blue	0-255
	4	0-100% White	0-255
	5	0-100% Dimmer	0-255
	6	No Strobe	0-5
		0-100% Strobe	6-250
		100% Strobe	251-255
Mode 4 Channel- "RGBW MIX"			
#4	1	0-100% Red	0-255
	2	0-100% Green	0-255
	3	0-100% Blue	0-255
	4	0-100% Calibrated White (affects RGB channels)	0-255
DYNAMIC WHITE DMX MODES			
MODE	CHANNEL	FUNCTION	VALUE
Mode 2 Channel- "Dynamic White 2CH"			
#1	1	Warm White 100% / Cold White 0%	0-003
		Warm White 100% / Cold White 0%-100%	004-122
		Warm White 100% / Cold White 100%	123-132
		Warm White 100%-0% / Cold White 100%	133-251
		Warm White 0% / Cold White 100%	252-255
	2	Dimmer 0-100%	0-255
Mode 2 Channel- "Separate White 2CH"			
#2	1	0%-100% Warm White	0-255
	2	0%-100% Cold White	0-255
Note: In the absense of DMX signal, LEDs will remain on.			

Note: In the absense of DMX signal, LEDs will remain on.