

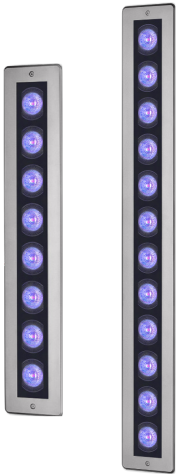
PARADE L MC RECESSED

RGBW



DESCRIPTION

PARADE L MC recessed linear luminaires are available in two or three foot lengths. Each model features premium quality high-brightness multi-chip LEDs and a comprehensive selection of six light distributions. Standard built-in programming capabilities include standalone or master-satellite configurations without the use of external control systems, or operation by remote DMX512 control systems. Recessed housing, trim, and hardware are stainless steel.



Date: _____ Type: _____ Catalog Number: _____

Project Name: _____

ORDERING INFORMATION

LUMINAIRE					
MODEL	CCT	CONTROL	CABLE	VOLTAGE	OPTIC
PDL2MCR Parade L2 MC Recessed- 2' Length	RGBW30K RGBW (3000K White)	DMX-RDM DMX-RDM	M Monocable Without Connectors (19.7")	UNV 120-277v	SP Spot 9°
PDL3MCR Parade L3 MC Recessed- 3' Length	RGBW40K RGBW (4000K White)		C Monocable With Connectors (19.7")		NB Narrow 14°
PDL2MCRPE Parade L2 MC Recessed Polar Edition- 2' Length					MB Medium 25°
PDL3MCRPE Parade L3 MC Recessed Polar Edition- 3' Length					WB Wide 37°
					ELH Elliptical 50° x 9°
					ELWH Elliptical Wide 60° x 33°

Custom options are available; consult factory for assistance via phone at (864) 487-3535 ext. 258 or via email at DesignServices@EXP-Brands.com.
See Page 4 for ordering information of available and required accessories.



PARADE L MC RECESSED

RGBW



		PARADE L2 MC RECESSED	PARADE L3 MC RECESSED
PHYSICAL	HOUSING	Extruded Aluminum	
	HOUSING SIZE	26.8" L x 5.3" W x 4.6" H	38.8" L x 5.6" W x 4.6" H
	WEIGHT	15.2 Pounds	20.3 Pounds
	OPERATING TEMPERATURE	-40°F to 122°F	

ELECTRICAL	POWER CONSUMPTION	37 Watts	55 Watts
	INPUT VOLTAGE	Universal 120-277v	
	AMPERAGE	0.31A @ 120V 0.13A @ 277V	0.46A @ 120V 0.20A @ 277V
	EFFICACY	Up to 49 Lumens Per Watt	
	CONTROL PROTOCOLS *	DMX/RDM Self-Addressing Standalone Master-Satellite DMX/RDM Addressable per foot (Contact Factory) * See separate DMX Mode Application Sheet	
	CABLE LENGTH	19.7"	
	CONNECTION KIT	GRIVEN-CON-KIT-8287 for "M" Cable	

PHOTOMETRIC	LED	RGBW (3000K or 4000K White) Multi-Chip	
	NUMBER OF LEDS	8	12
	L70 LUMEN MAINTENANCE	> 50,000 Hours	
	# DISTRIBUTIONS	Six	
	LIGHT CONTROL ACCESSORIES	None	

LIGHT DISTRIBUTIONS*	DISTRIBUTION	BEAM ANGLE	RGBW 3000K			RGBW 4000K		
			LUMENS	EFFICACY	MAX. CANDELA	LUMENS	EFFICACY	MAX. CANDELA
	PARADE L2 MC RECESSED							
	SPOT	9°	1595	43	30083	1814	49	34206
	NARROW	14°	1486	40	17428	1689	46	19803
	MEDIUM	25°	1450	39	6241	1648	45	7092
	WIDE	37°	1103	30	1455	1254	34	1654
	ELLIPTICAL	50° x 9°	1488	40	8818	1645	44	9749
	ELLIPTICAL WIDE	60° x 33°	1421	38	2206	1615	44	2507
	PARADE L3 MC RECESSED							
SPOT	9°	2372	43	44731	2695	49	50823	
NARROW	14°	2209	40	25907	2510	46	29437	
MEDIUM	25°	2156	39	9279	2450	45	10545	
WIDE	37°	1640	30	2164	1864	34	2459	
ELLIPTICAL	50° x 9°	2152	39	12753	2445	44	14490	
ELLIPTICAL WIDE	60° x 33°	2112	38	3279	2401	44	3728	

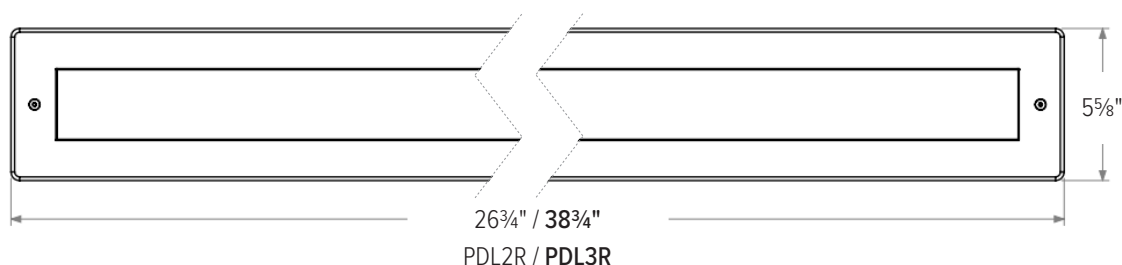
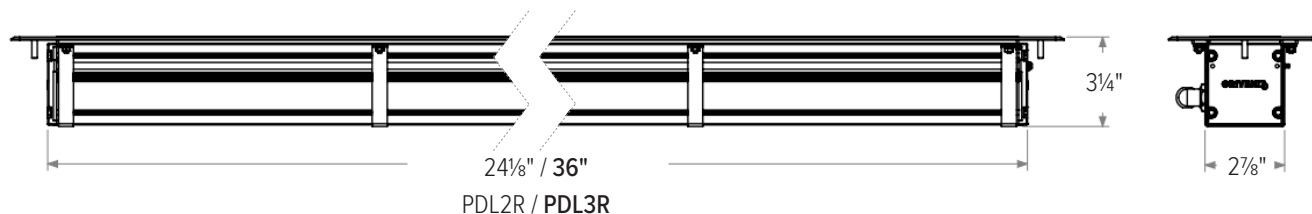
* Values based on full RGBW output.

CERTIFICATIONS	SAFETY	ETL Listed for Wet Locations		
	INGRESS PROTECTION	IP67		
	IMPACT RATING	IK10		
	WARRANTY	Five Year Limited Warranty		

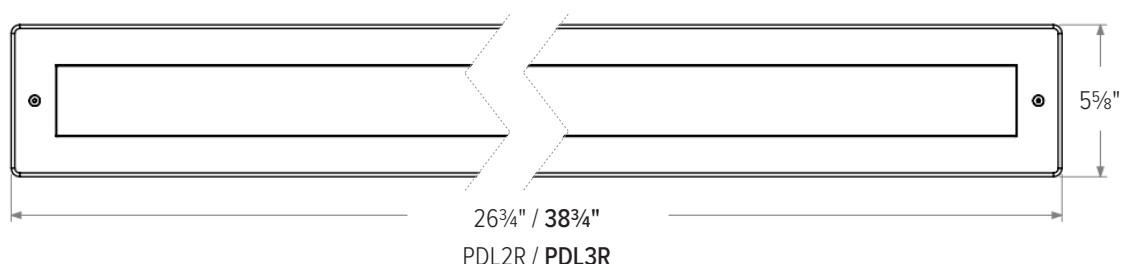
DIMENSIONS

All dimensions are shown in inches unless otherwise noted.

Luminaire Dimensions



Luminaire Dimensions with Recessed Back Box



CUSTOMIZE YOUR EXPERIENCE.

At Experience Brands, we believe every space deserves unique lighting elements. We proudly specialize in crafting solutions that reflect your personal vision. Our expert team is here to collaborate with you to design and implement customized features that elevate your environment.

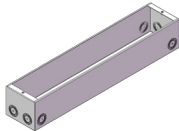
Ready to Get Started? Email us at: DesignServices@exp-brands.com

ACCESSORIES

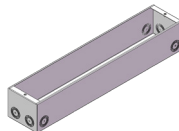
NOTE: Accessories are ordered and shipped separately from luminaire for field installation.



IR-CONFIG-REMOTE
Infrared DMX Configuration Remote



PDL2R-RBB
Parade L2 Recessed Back Box



PDL3R-RBB
Parade L3 Recessed Back Box



GRIVEN-CON-KIT-8287
Connection Kit for "M" Cable Type

ORDERING INFORMATION

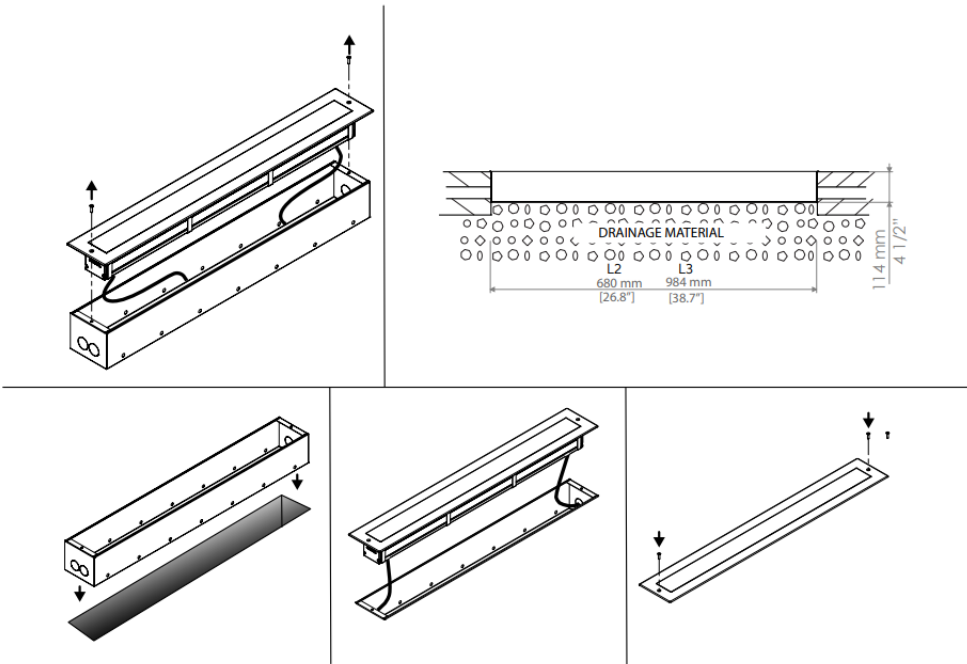
UNPAINTED ACCESSORIES

MODEL
IR-CONFIG-REMOTE Infrared DMX Configuration Remote ¹
PDLR2-RBB Parade L2 Recessed Back Box
PDLR3-RBB Parade L3 Recessed Back Box
GRIVEN-CON-KIT-8287 Connection Kit for "M" Cable

¹Unless an RDM compatible control is used, one IR-CONFIG-REMOTE must always be purchased with one or more DMX/RDM luminaires in order to access DMX addressing.

Additional Control and Installation Solutions are available online; click here to view available options.

INSTALLATION



PARADE L MC RECESSED

RGBW

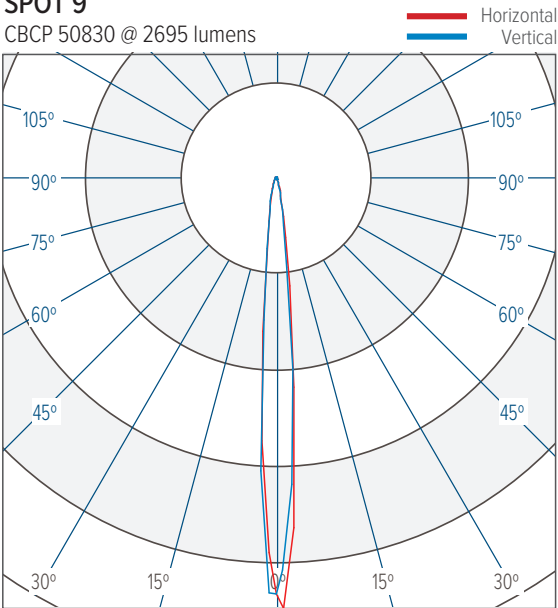


PHOTOMETRICS

Note: Values shown are for Parade L3 MC Recessed in RGBW 4000K. See Prorate Table on page 6 to determine photometric and lumen values of other formats.

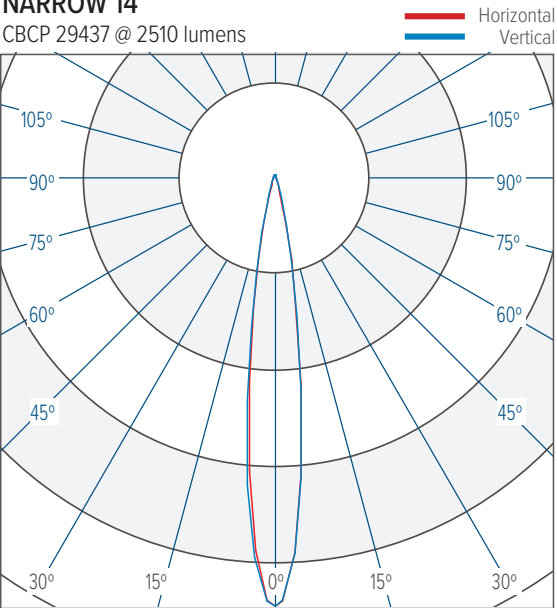
SPOT 9°

CBCP 50830 @ 2695 lumens



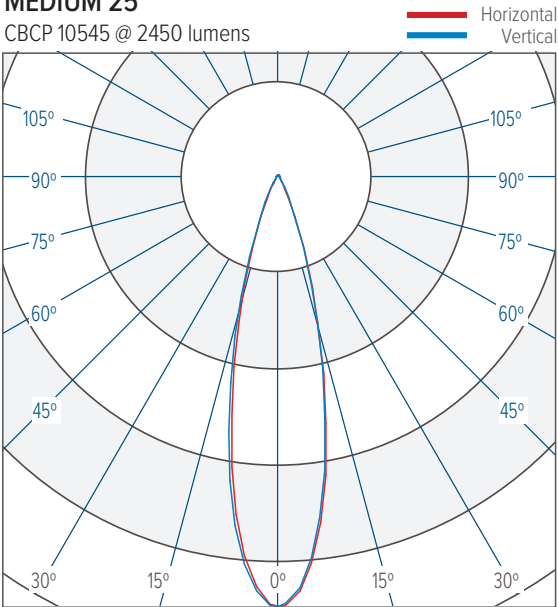
NARROW 14°

CBCP 29437 @ 2510 lumens



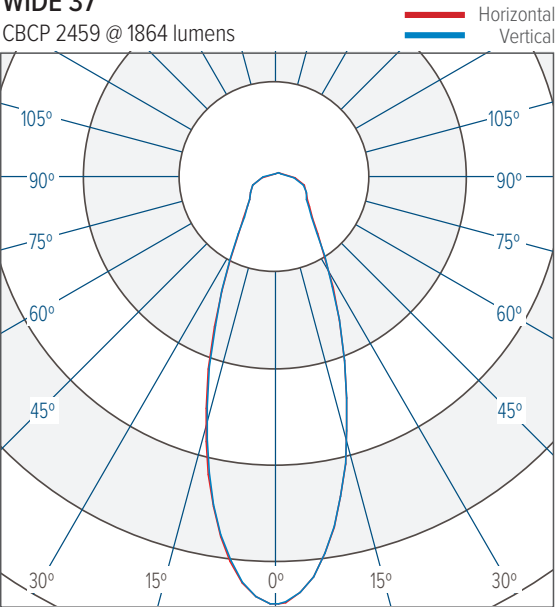
MEDIUM 25°

CBCP 10545 @ 2450 lumens



WIDE 37°

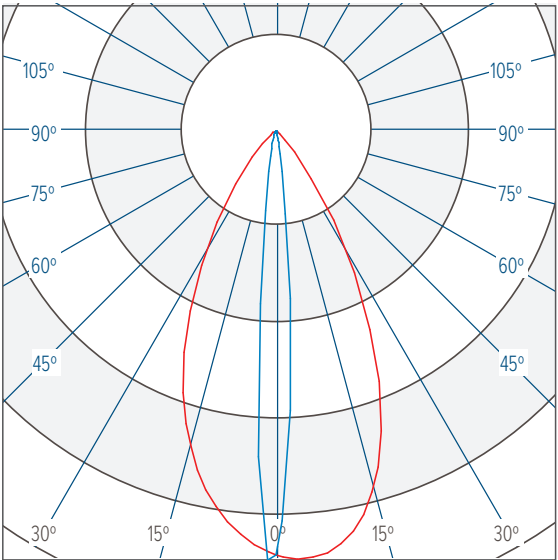
CBCP 2459 @ 1864 lumens



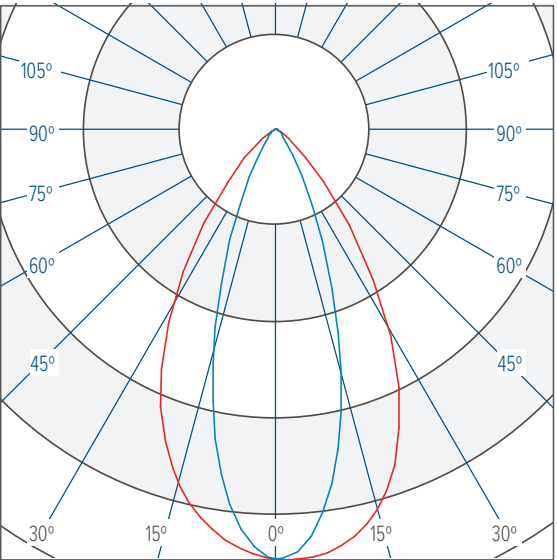
PHOTOMETRICS

Note: Values shown are for Parade L3 MC Recessed in RGBW 4000K. See Prorate Table on page 6 to determine photometric and lumen values of other formats.

ELLIPTICAL 50° x 9°
CBCP 14490 @ 2445 lumens

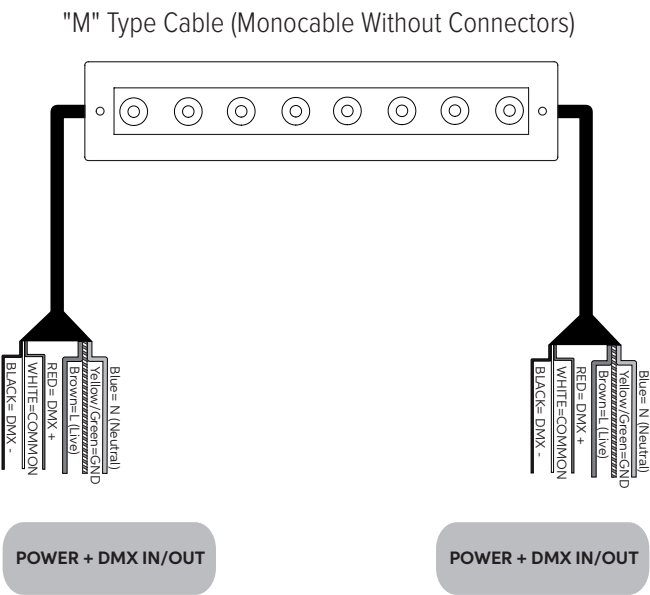
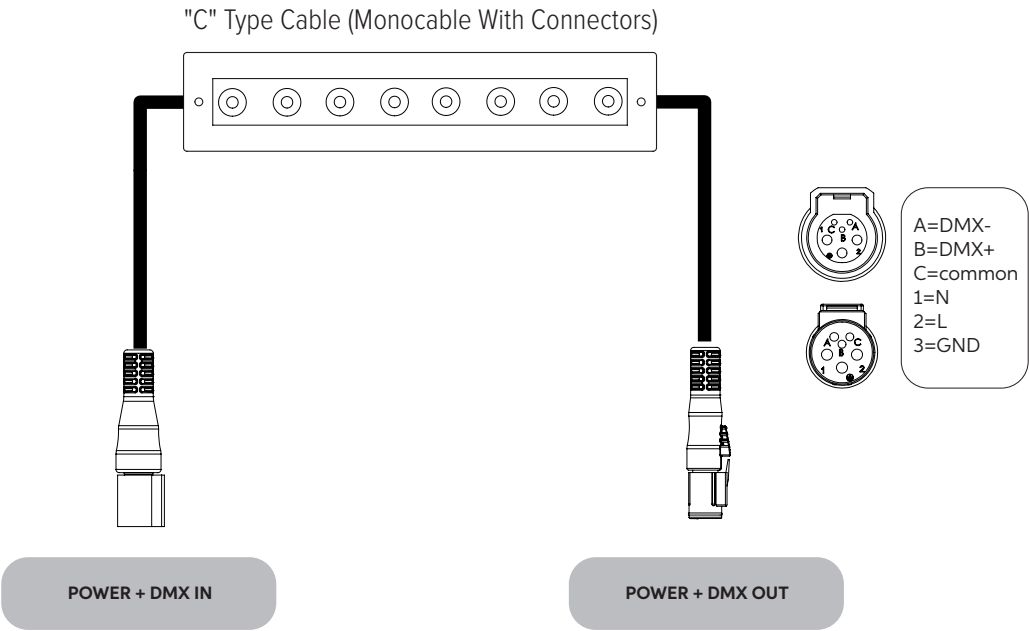


ELLIPTICAL WIDE 60° x 33°
CBCP 3728 @ 2401 lumens



PHOTOMETRIC PRORATE FACTORS		
	RGBW 3000K	RGBW 4000K
Parade L2 MC Recessed	0.59	0.67
Parade L3 MC Recessed	0.88	1.0

CONNECTIONS

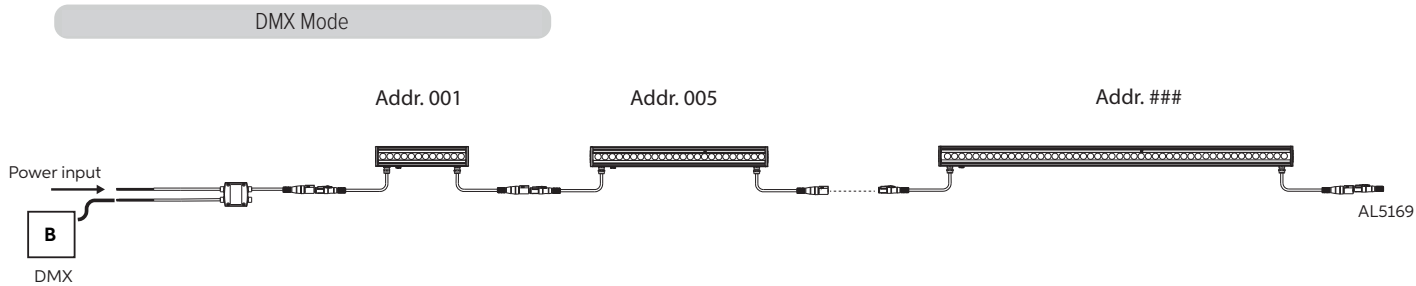


PARADE L MC RECESSED

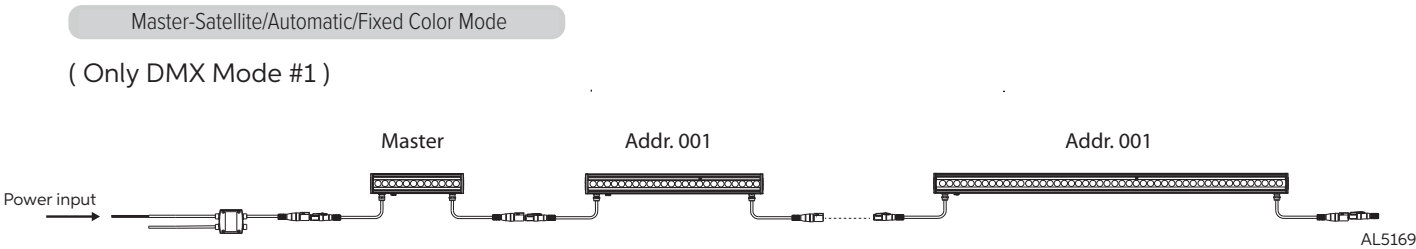
RGBW



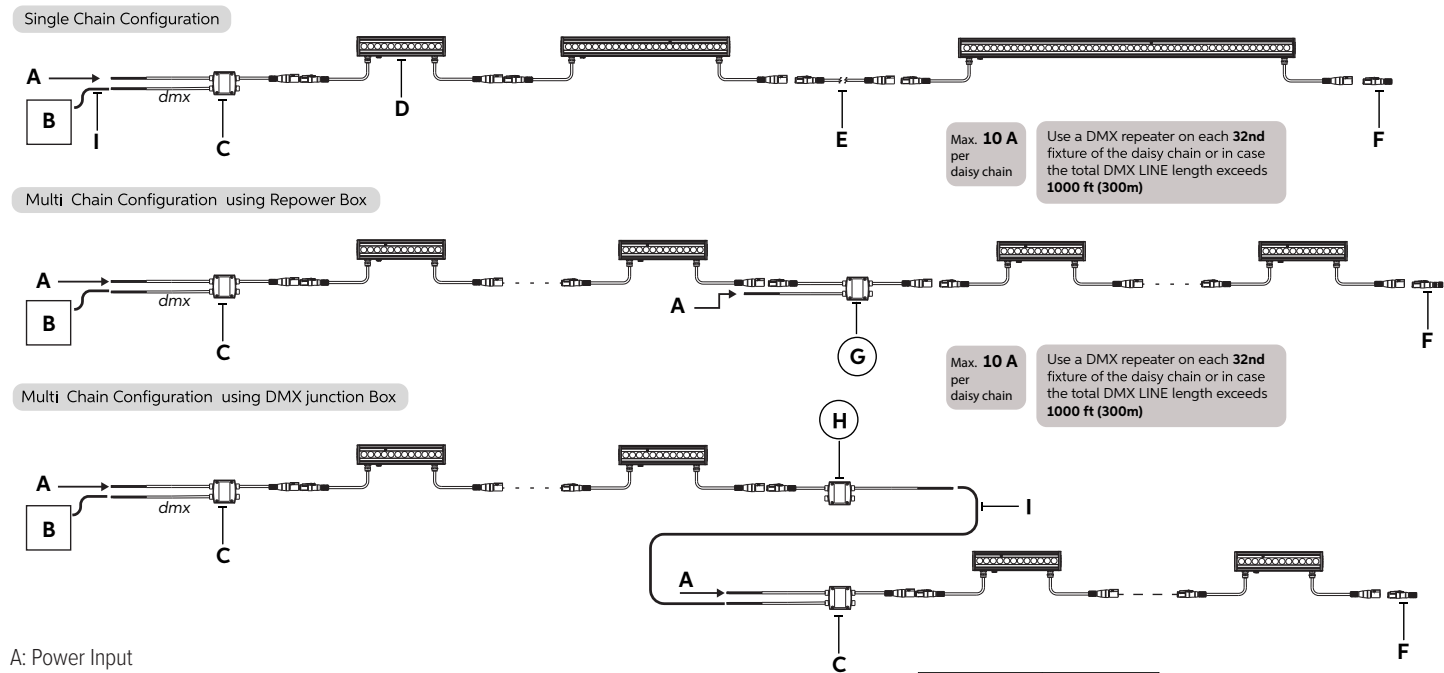
OPERATING MODES



Example with fixtures set at 4 DMX channels



CONFIGURATION



- A: Power Input
B: DMX/RDM Controller
C: Start Line Box- *PDLMC-STRTLNBX-C / PDLMC-STRTLNBX-NC*
D: Parade L1, L2, L3, L4 MC or L2 MC or L3 MC Recessed
E: Connection Cable- *PDLMC-CBL-1M, PDLMC-CBL-2M, PDLMC-CBL-3M, PDLMC-CBL-5M, PDLMC-CBL-10M*
F: DMX Terminator- *PDLMC-DMXTRMNR*
G: Repower Box- *PDLMC-RPWRBX-C / PDLMC-RPWRBX-NC*
H: DMX Junction Box- *PDLMC-DMXJB-C / PDLMC-DMXJB-NC*
I: DMX Cable

CE Colours	USE
Brown	Live
Blue	Neutral
Yellow/Green	Ground
Red	DMX Data +
Black	DMX Data -
White	DMX GND