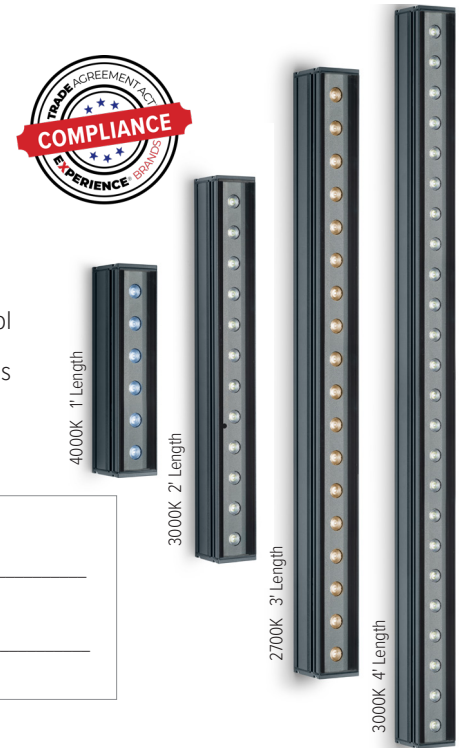


DESCRIPTION

PARADE L linear luminaires are available in one-foot increments up to four feet overall length. Each model features premium quality high brightness LEDs and a comprehensive selection of ten light distributions. Adjustable brackets are available in three standard lengths. Standard built-in programming capabilities include economical stand-alone operation or master-satellite configurations without the use of external control systems, or operation by remote DMX512 control systems. Four standard finishes are available with options for marine-grade or custom RAL finishes on request. All hardware is stainless steel.



Date: _____ Type: _____ Catalog Number: _____

Project Name: _____

ORDERING INFORMATION

LUMINAIRE							
MODEL	CCT	CONTROL	CABLE	VOLTAGE	OPTIC	FINISH	OPTION
PDL1 Parade L1 - 1' Length	27K 2700K	DMX-RDM DMX-RDM	M Monocable Without Connectors (19.7")	UNV 120-277v	SP Spot 8°	AG Anthracite Grey	AST Anti-Saline Treatment
PDL2 Parade L2 - 2' Length	30K 3000K		C Monocable With Connectors (19.7")		NB Narrow 12°	BL Black	LVR Internal Honeycomb Louver
PDL3 Parade L3 - 3' Length	40K 4000K				MB Medium 26°	SG Griven Silver Grey	
PDL4 Parade L4 - 4' Length					WB Wide 40°	WH White	
PDL1PE Parade L1 Polar Edition - 1' Length					EW Extra Wide 58°	CC Custom RAL Color	
PDL2PE Parade L2 Polar Edition - 2' Length					ELH Elliptical 42° x 11°		
PDL3PE Parade L3 Polar Edition - 3' Length					ELWH Elliptical Wide 40° x 24°		
PDL4PE Parade L4 Polar Edition - 4' Length					WW Wall Wash 36° x 15° (5° Incline)		

Custom options are available; consult factory for assistance via phone at (864) 487-3535 ext. 258 or via email at DesignServices@EXP-Brands.com.

See Page 4 for ordering information of available and required accessories.

		PARADE L1	PARADE L2	PARADE L3	PARADE L4
PHYSICAL	HOUSING	Extruded Aluminum			
	LENS	Tempered Glass			
	DRIVER LOCATION	Integral			
	DIMENSIONS	12 5/8" L x 3 3/4" W x 3" H	24 1/8" L x 3 3/4" W x 3" H	36 1/8" L x 3 3/4" W x 3" H	48 1/8" L x 3 3/4" W x 3" H
	WEIGHT	4 Pounds	6.2 Pounds	9.7 Pounds	12.4 Pounds
	OPERATING TEMPERATURE	-40°F to 122°F (-40°C to 50°C)			

ELECTRICAL	VOLTAGE	Universal 120 to 277 Volts			
	POWER CONSUMPTION	19 Watts	38 Watts	56 Watts	75 Watts
	CURRENT	0.16 Amps at 120 Volts 0.07 Amps at 277 Volts	0.32 Amps at 120 Volts 0.14 Amps at 277 Volts	0.47 Amps at 120 Volts 0.20 Amps at 277 Volts	0.63 Amps at 120 Volts 0.27 Amps at 277 Volts
	CONTROL	DMX-RDM			
	CABLE	19.7" Monocable			
	CONNECTION KIT	GRIVEN-CON-KIT-8287			

PHOTOMETRIC	LED	Static White 2700K, 3000K, or 4000K			
	LUMEN MAINTENANCE	L70 > 100,000 Hours at 77°F*			
	PHYSICAL AIMING	+/- 90°			

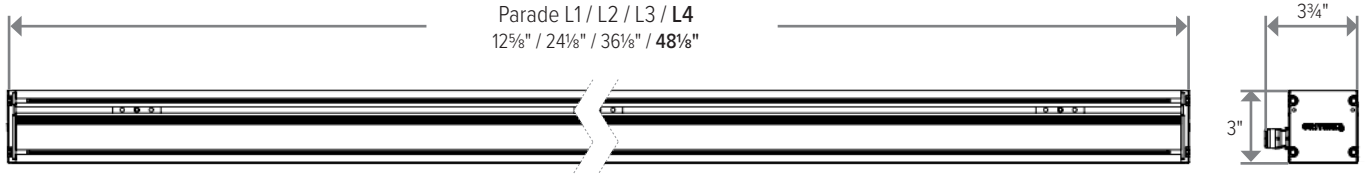
			PARADE L1	PARADE L2	PARADE L3	PARADE L4					
LIGHT DISTRIBUTIONS	DISTRIBUTION	BEAM ANGLE	LUMENS	EFFICACY	LUMENS	EFFICACY	LUMENS	EFFICACY	LUMENS	EFFICACY	
	2700K & 3000K	SPOT	8°	1923	101	3847	101	4535	81	7593	101
		NARROW	12°	1788	94	3506	92	4133	74	7061	94
		MEDIUM	26°	1759	93	3519	93	4148	74	6945	93
		WIDE	40°	1699	89	3398	89	4006	72	6704	89
		EXTRA-WIDE	58°	1405	74	2809	74	3312	59	5544	74
		ELLIPTICAL	42° X 11°	1622	85	3242	85	3823	68	6397	85
		ELLIPTICAL WIDE	40° X 24°	1621	85	3242	85	3823	68	6399	85
	WALL WASH	36° X 15° (5° INCLINE)	1556	82	3113	82	3670	66	6143	82	
	4000K	SPOT	8°	2071	109	4143	109	4884	87	8176	109
		NARROW	12°	1926	101	3853	101	4542	81	7604	101
		MEDIUM	26°	1894	100	3789	100	4467	80	7479	100
		WIDE	40°	1829	96	3658	96	4313	77	7220	96
		EXTRA-WIDE	58°	1512	80	3026	80	3567	64	5971	80
		ELLIPTICAL	42° X 11°	1746	92	3492	92	4116	74	6890	92
ELLIPTICAL WIDE		40° X 24°	1746	92	3492	92	4116	74	6891	92	
WALL WASH	36° X 15° (5° INCLINE)	1676	88	3352	88	3953	71	6616	88		

Values based on delivered lumens at full output.

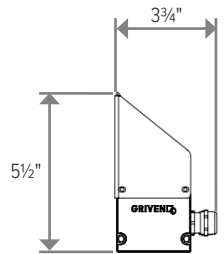
CERTIFICATIONS	SAFETY	ETL Certified for Wet Locations			
	INGRESS PROTECTION	IP67			
	IMPACT RATING	IK09	IK10	IK09	IK10
	WARRANTY	Five Year Limited Warranty			

DIMENSIONS

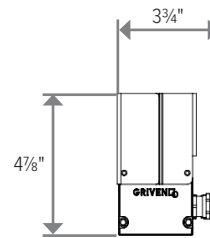
All dimensions are shown in inches unless otherwise noted.



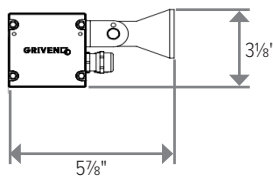
ACCESSORY DIMENSIONS



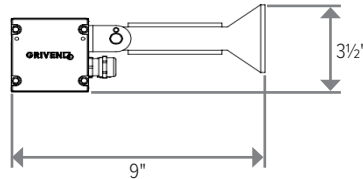
Parade with Visor



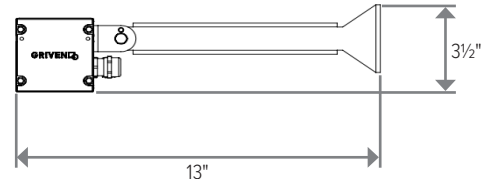
Parade with Snoot



Parade with 3" Mount



Parade with 6" Mount



Parade with 10" Mount

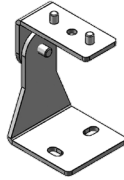
ACCESSORIES

NOTE: Accessories are ordered and shipped separately from luminaire for field installation.



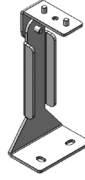
IR-CONFIG-REMOTE

Infrared DMX Configuration Remote



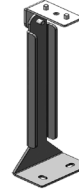
PDL-BRKT-3IN

3" Mounting Brackets (2)



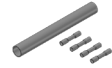
PDL-BRKT-6IN

6" Mounting Brackets (2)



PDL-BRKT-10IN

10" Mounting Brackets (2)



GRIVEN-CON-KIT-8287

Connection Kit for "M" Cable Type

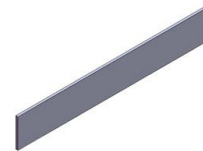


Visor



Snoot

See ordering information below.



Honeycomb Louver

ORDERING INFORMATION

PAINTED ACCESSORIES

MODEL	ACCESSORY	FINISH
PDL1 Parade L1	VISOR Louver	AG Anthracite Grey
PDL2 Parade L2	SNOOT Snout	BL Black
PDL3 Parade L3	LVR External Honeycomb Louver	SG Griven Silver Grey
PDL4 Parade L4		WH White
		CC Custom RAL Color

ORDERING INFORMATION

UNPAINTED ACCESSORIES

MODEL
IR-CONFIG-REMOTE Infrared DMX Configuration Remote ¹
PDL-BRKT-3IN Parade Mounting Brackets, Set of 2, 3" Height
PDL-BRKT-6IN Parade Mounting Brackets, Set of 2, 6" Height
PDL-BRKT-10IN Parade Mounting Brackets, Set of 2, 10" Height
GRIVEN-CON-KIT-8287 Connection Kit for "M" Cable

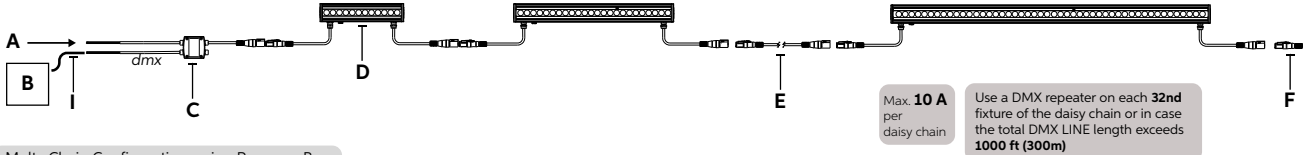
¹Unless an RDM compatible control is used, one IR-CONFIG-REMOTE must always be purchased with one or more DMX/RDM luminaires in order to access DMX addressing.

CONTROL OPTIONS (DMX512, PRIMARY CONTROL PLATFORM)

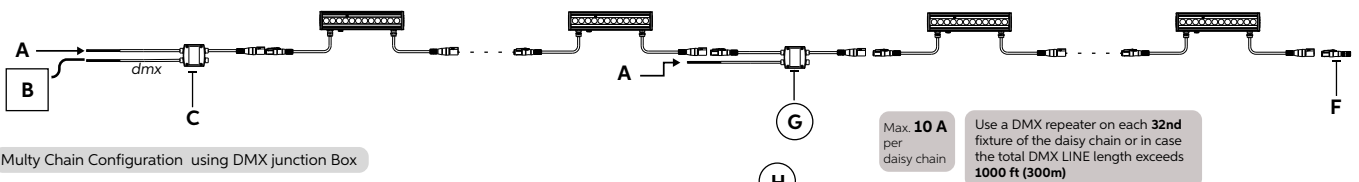
Contact manufacturer for control system development.

Copyright © 2020, GRIVEN S.r.l World Lighting Challenge - www.griven.com

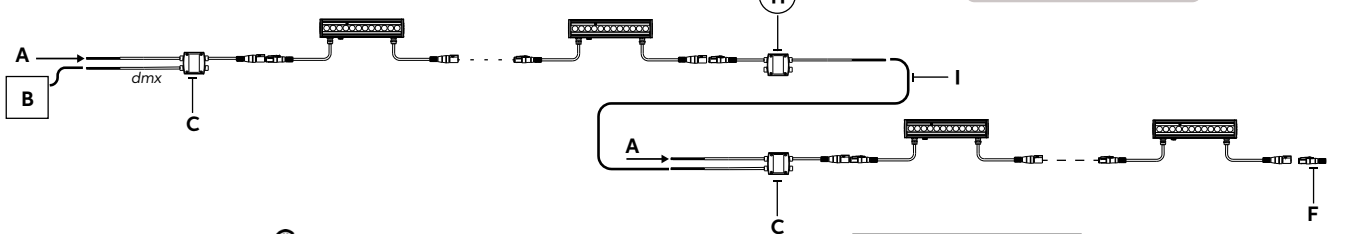
Single Chain Configuration



Multy Chain Configuration using Repower Box



Multy Chain Configuration using DMX junction Box



- A - Power Input CE ver. 220-240 Vac -  ver. 120 & 277 Vac
- B - DMX/RDM Controller
- C - Start Line Box - AL5058C with connectors / AL5058M without connectors
- D - Parade L-1, L-2, L-3, L-4, L-2 Recessed, L-3 Recessed
- E - Connection Cable - AL8264 L=1m AL8265 L=2m AL8266 L=3m AL8267 L=5m AL8268 L=10m
- F - DMX Terminator - AL5169
- G - Repower Box - AL5167C with connectos / AL5167M without connectors
- H - DMX Junction Box - AL5059C with connectors / AL5059M without connectors
- I - DMX Cable - AL0512

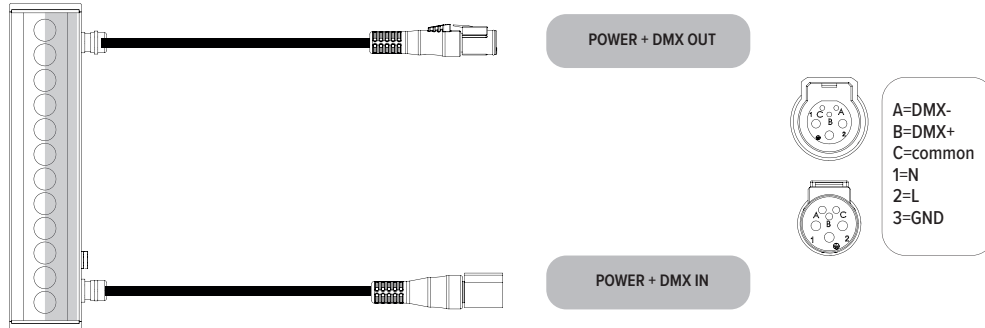
CE Colours	USE
Brown	Live
Blue	Neutral
Yellow/Green	Ground
Red	DMX Data +
Black	DMX Data -
White	DMX GND

NOTES:

1. Wire specifications are available from factory as well as approved wire for purchase.
2. Other control protocol solutions available. Contact factory for more information.
3. Wireless components are external to fixture. Distance limitations based on antennas chosen and site conditions. Contact factory for more information.
4. Based on maximum of 32 fixtures per run as well as any site constraints on conveyance of data.
5. For example: Lutron, Crestron, Encelium, Douglas, ETC by others. Griven control system will interface with building lighting control system.
6. Local wall controller for small applications. Wall controllers specified separately for larger systems.
7. Contact factory for assistance with specification. Onsite commissioning by Griven of control system is required.

CONNECTIONS

"C" Type cable (Monocable + connectors)



"M" Type cable (Monocable without connectors - RDM version)

