


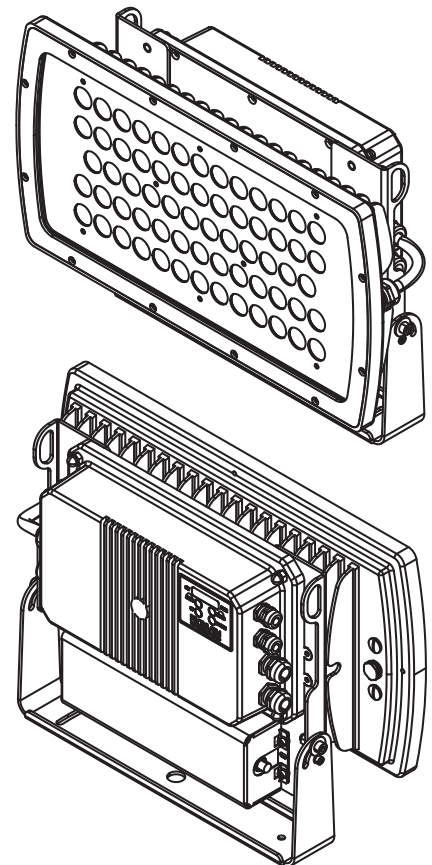
PROJECT	TYPE
SPECIFIER	DATE
ORDER #	QTY

CORAL epitomizes versatility in a compact wall wash luminaire. Measuring only 18" wide by 12" tall, it is equipped with 64 high-power, premium LEDs with a wide spectrum of symmetric optics in spot, narrow, medium, wide, or extra wide beam spreads or two elliptical distributions that may be specified in horizontal or vertical orientations to satisfy varying site geometries. The On-board control panel allows the user to operate the units with DMX or with built-in Automatic Control mode for master-satellite operation for simplified sequencing. Separate sealed compartment thermally isolates the LED driver from the LEDs and electronic circuitry for enhanced longevity. All hardware is stainless steel.

PRODUCT SPECIFICATIONS

LUMEN OUTPUT	5797 lumens @ 7° RGBW (see pg 3 for output values of all standard colors)
EFFICACY	36.7 (lm/W) RGBW
LUMEN MAINTENANCE	100,000 hours L70 @ 25°C*
COLOR	RGBW (6500K white) (see pg 4 for customization options)
OPTICS	7°, 11°, 20°, 43°, 69°, 41° x 9°, 37° x 20°
OPERATING TEMPERATURE	-40° to 122° F (-40° to 50°C)
HOUSING	Die-cast aluminum body with powder coat
MOUNTING	Yoke mount with locking hinge (custom mounting available upon request)
WEIGHT	17.6 lbs. (8 kg)
CERTIFICATION	
INGRESS PROTECTION	Wet location rated IP66
IMPACT RATING	IK09
CONTROL	Auto Control, DMX 512 (RDM E1.20), Wireless and 0-10V interfaces available
ADDITIONAL FEATURES	Automatic overtemperature protection / Keypad interface

* LED life may vary under actual field conditions due to external factors. Lifetime estimates are generated from actual testing in a controlled environment. Given values are conservatively derived from those numbers.



ELECTRICAL SPECIFICATIONS

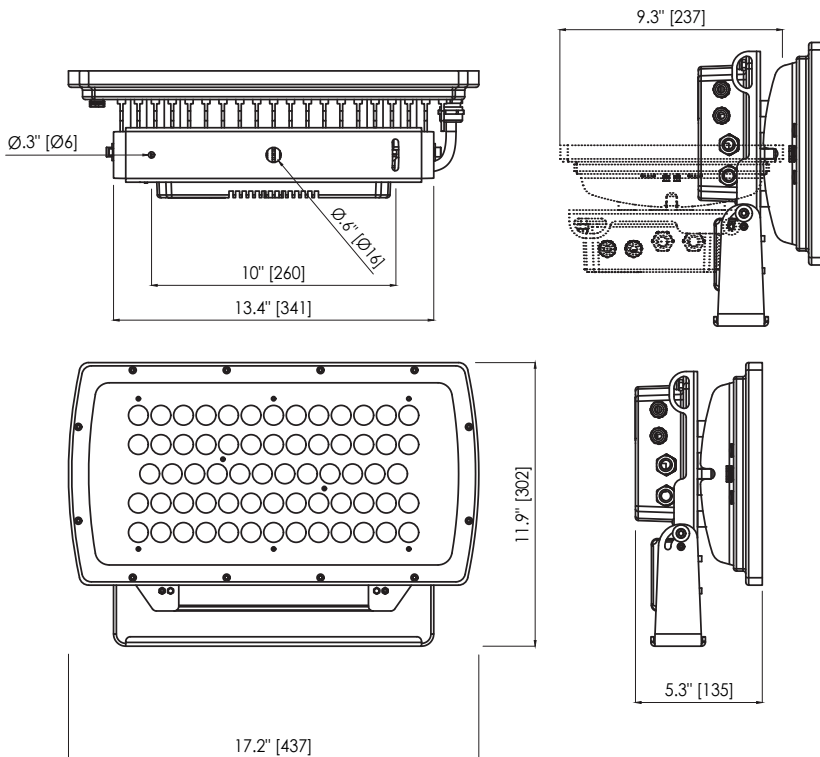
INPUT VOLTAGE	100-277 VAC @ 50-60Hz
POWER CONSUMPTION	158W 1.77A @ 115VAC, 0.68A @ 277VAC
POWER FACTOR	>.98 @ 115VAC, >.9 @ 277VAC
PROTECTION	Self-resetting fuse

IP66 / IK09 / CE / 

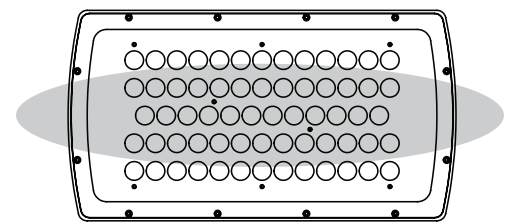
HOW TO ORDER

CR437		UNV					
PART	COLOR	VOLTAGE	OPTIC	ORIENTATION	FINISH	ACCESSORIES	OPTIONS
	RGBW	UNV 100-277V	SP Spot 7°	H Horizontal	SG Silver Gray	BND Barndoor	SD Spreading Diffuser (consult factory)
	CCM Custom Monochrome		NB Narrow 11°	V Vertical	CC Custom Color	FGS Full Glare Shield	
			MB Medium 20°		SGM Silver Gray Marine Grade	AGS Angled Glare Shield	
			WB Wide 43°		CCMG Custom Color Marine Grade		
			EXWB Extra Wide 69°				
			ELLB Elliptical 41° x 9°				
			ELWB Elliptical Wide 37° x 20°				

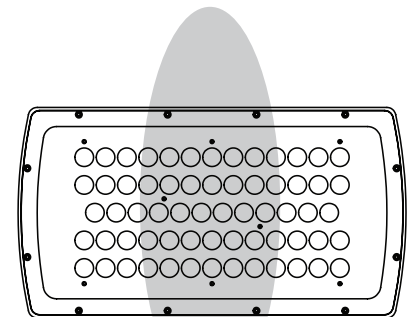
DIMENSIONAL DRAWINGS



OPTIC ORIENTATION



HORIZONTAL MODE (Standard)

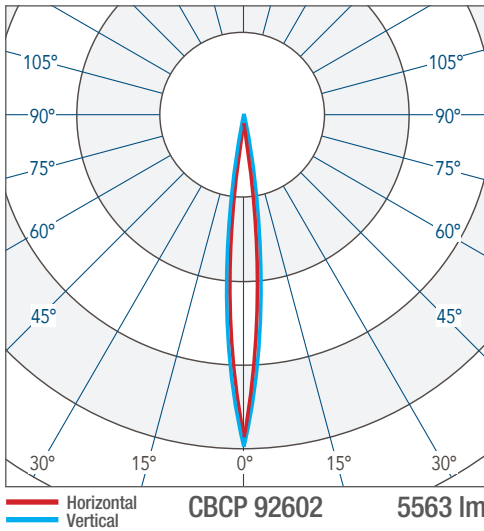


VERTICAL MODE (On Request)

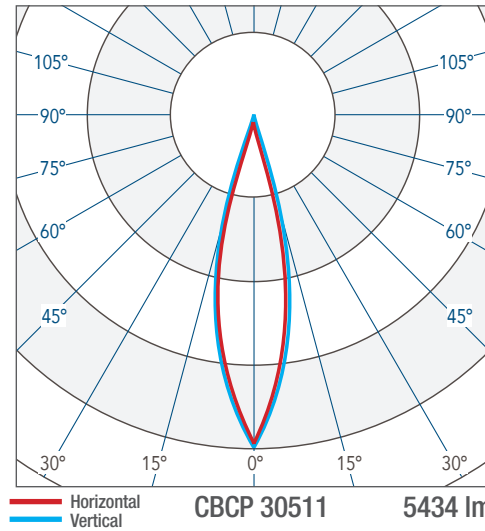
PHOTOMETRICS

CANDELA DISTRIBUTION

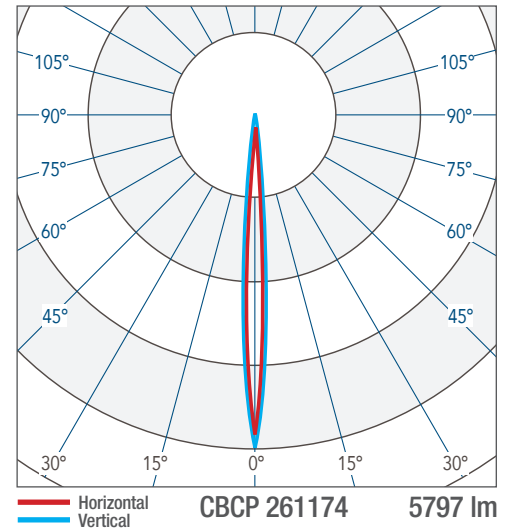
NARROW (RGBW) 11°



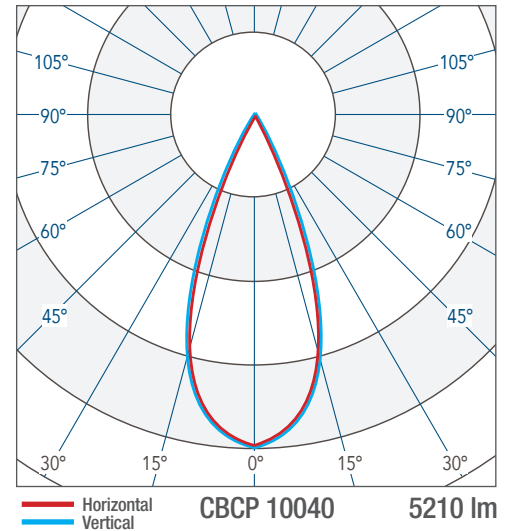
MEDIUM (RGBW) 20°



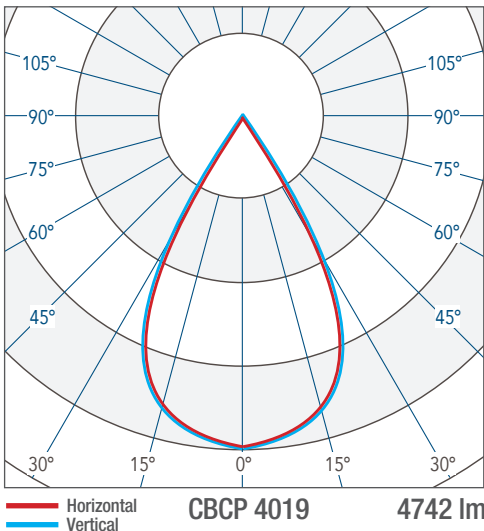
SPOT (RGBW) 7°



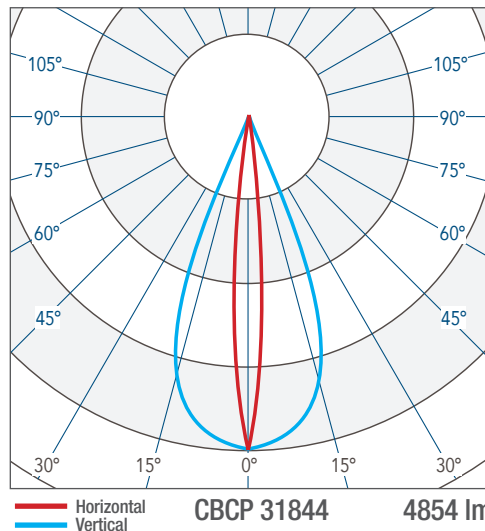
WIDE (RGBW) 43°



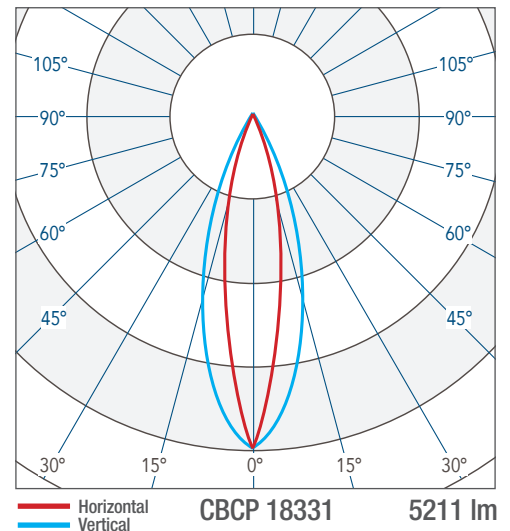
EXTRA WIDE (RGBW) 69°



ELLIPTICAL (RGBW) 41° x 9°



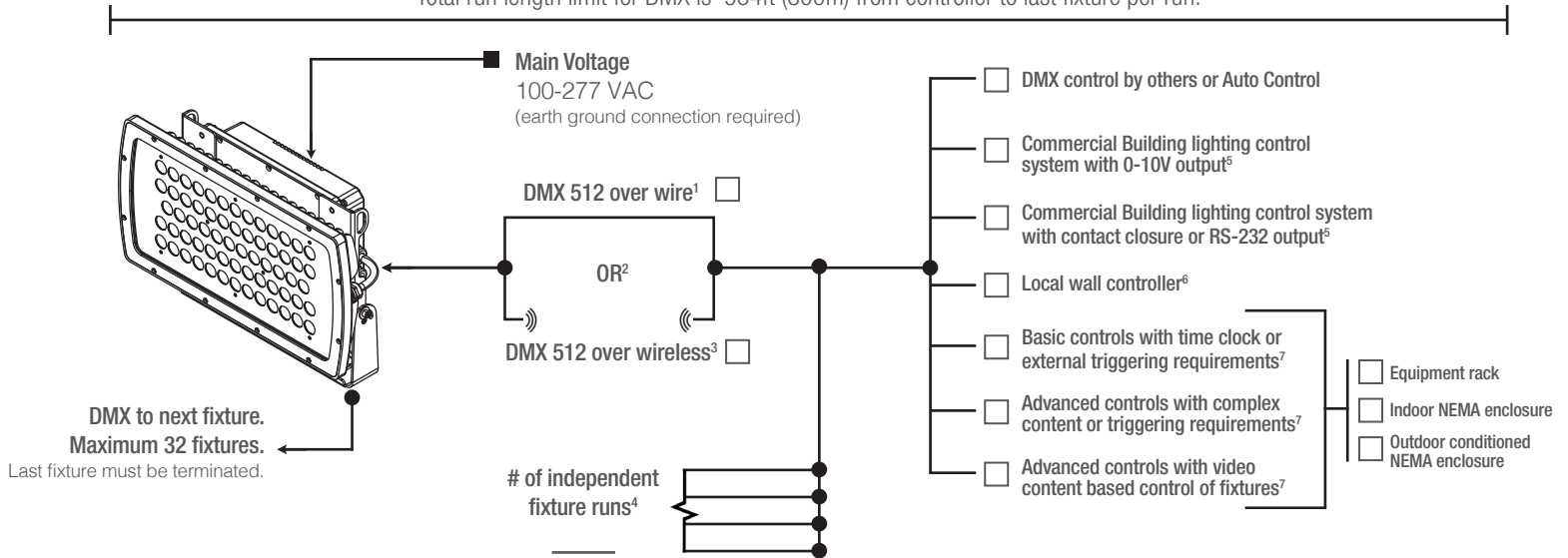
ELLIPTICAL WIDE (RGBW) 37° x 20°



CONTROL OPTIONS (DMX512, PRIMARY CONTROL PLATFORM)

Contact manufacturer for control system development.

Total run length limit for DMX is 984ft (300m) from controller to last fixture per run.



NOTES

1. Wire specifications are available from factory as well as approved wire for purchase.
2. Other control protocol solutions available. Contact factory for more information.
3. Wireless components are external to fixture. Distance limitations based on antennas chosen and site conditions. Contact factory for more information.
4. Based on maximum of 32 fixtures per run as well as any site constraints on conveyance of data.
5. For example: Lutron, Crestron, Encellium, Douglas, ETC by others. Griven control system will interface with building lighting control system.
6. Local wall controller for small applications. Wall controllers specified separately for larger systems.
7. Contact factory for assistance with specification. Onsite commissioning by Griven of control system is required.

PRODUCT OPTIONS



SPREADING DIFFUSER

Die cut spreading diffusers can be added to fixture. Factory sealed in fixture for highest performance and durability. Consult factory.



MARINE GRADE COATING

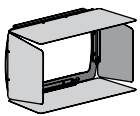
Maximum corrosion resistance for installations near salt or brackish water.



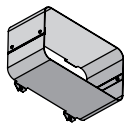
CUSTOM MONOCHROME

Fixtures with dedicated color LEDs available. Contact Griven USA to confirm availability of a custom color.

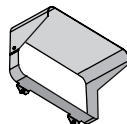
ACCESSORIES



Barndoor



Full Glare Shield



Angled Glare Shield

