
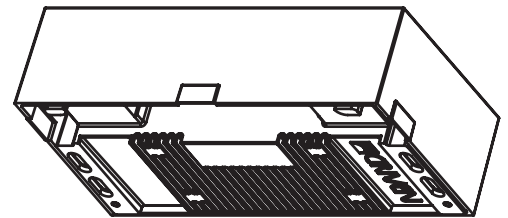
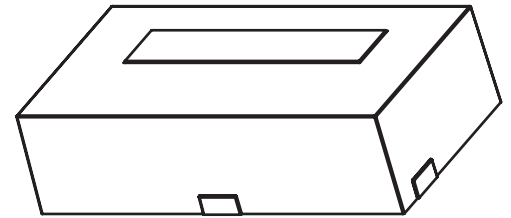


PROJECT	TYPE
SPECIFIER	DATE
ORDER #	QTY

EKLIPSE adds form and depth to buildings of all architectural styles through the illumination of inner frames of fenestration or similar elements. The compact LED “effects” luminaire features four high power LEDs in RGBW, dynamic white, or static colors combined with specialized optics to produce an ultra-narrow 160° elliptical distribution with little spill. RGBW and dynamic white models feature DMX control capability to bring repeating architectural elements to life through patterns or color-changing scenes for visual interest. The LEDs may be dimmed continuously from 0 to 100%. EKLIPSE is IP66 rated and suitable for indoor or outdoor applications. All hardware is stainless steel.

PRODUCT SPECIFICATIONS

LUMEN OUTPUT	472 lumens @ 12° x 127° CW (see pg 3 for output values of all standard colors)
EFFICACY	47 (lm/W) CW
LUMEN MAINTENANCE	100,000 hours L70 @ 25°C*
COLOR	RGBW (6500K white), DW (2700-6500K), CW (6300K), WW (3000K) (see pg 4 for customization options)
OPERATING TEMPERATURE	-40°F to 122°F (-40°C to 50°C)
HOUSING	Aluminum
MOUNTING	Two fastener tabs per node for surface mounting
WEIGHT	LED module: 2.2 lbs (1 Kg) Electronic driver: 8.2 lbs (3.7 Kg)
CERTIFICATION	
INGRESS PROTECTION	Wet location rated IP66
IMPACT RATING	IK07
CONTROL	DMX 512 RDM (E1.20) or Auto Addressing; Wireless and 0-10V interfaces available
ADDITIONAL FEATURES	Automatic overtemperature protection



* LED life may vary under actual field conditions due to external factors. Lifetime estimates are generated from actual testing in a controlled environment, Given values are conservatively derived from those numbers.

ELECTRICAL SPECIFICATIONS

INPUT VOLTAGE	100-277 VAC @ 50-60Hz
POWER CONSUMPTION	10W maximum; maximum 8 per power supply
POWER FACTOR	>.98 @ 115VAC, >.94 @ 277VAC (power supply)

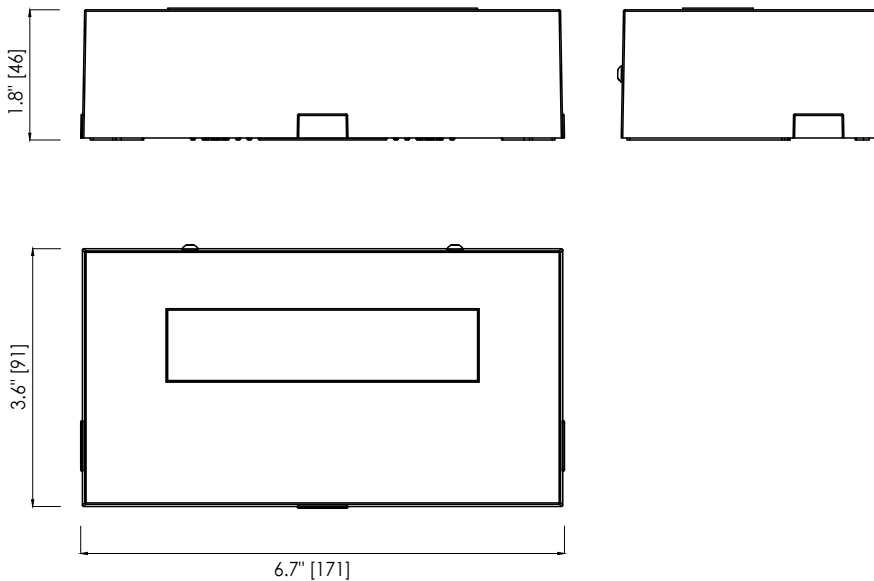
IP66 / IK07 /  / 



HOW TO ORDER

EKL17		UNV				
PART	COLOR	VOLTAGE	OPTIC	FINISH	ACCESSORIES	CONTROL
	RGBW	UNV	ELLB	SG	FGS	RDM
	DW	100-277V	Elliptical	Silver Gray	Full Glare Shield	Remote Device
	2700-6500K		12" x 127"	CC		MGMT
	CW			Custom Color		AD
	6300K			SGM		Auto Addressing
	WW			Silver Gray		
	3000K			Marine Grade		
	CCW			CCMG		
	Custom White			Custom Color		
	CCM			Marine Grade		
	Custom					
	Monochrome					

DIMENSIONAL DRAWINGS



PHOTOMETRICS

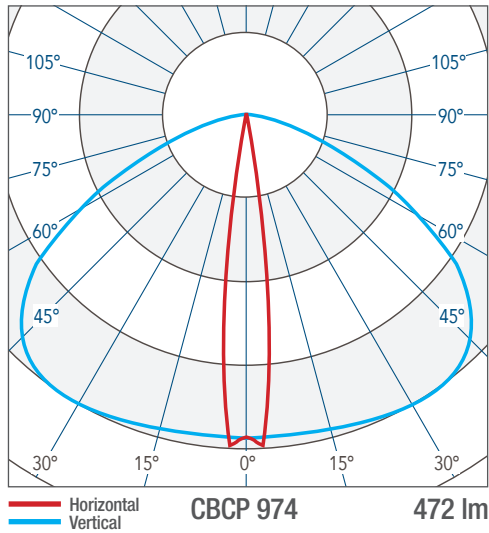
LIGHT OUTPUT

Photometric data based on cool white LEDs. Use multiplier to determine lumen and CBCP output for RGBW, DW, or WW.

COLOR	OUTPUT MULTIPLIER
RGBW (6500K White)	.42
DW (2700-6500K)	.85
CW (6300K)	1.00
WW (3000K)	.70

CANDELA DISTRIBUTION

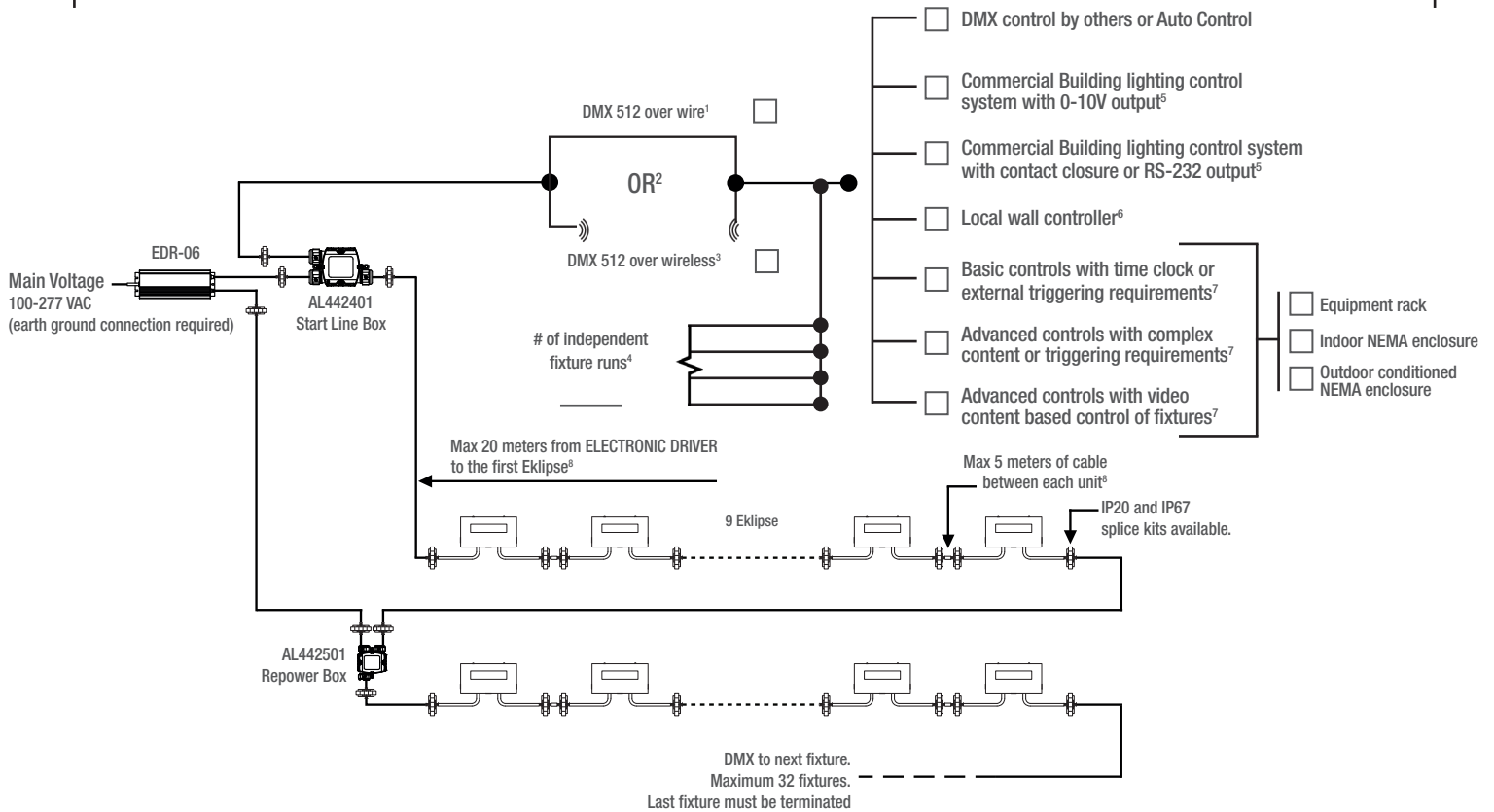
ELLIPTICAL (CW) 12° x 127°



CONTROL OPTIONS

Contact manufacturer for control system development.

Total run length limit for DMX is 984ft (300m) from controller to last fixture per run.



PRODUCT OPTIONS



MARINE GRADE COATING

Maximum corrosion resistance for installations near salt or brackish water.



CUSTOM WHITE LIGHT

Choose the white light you need for your project. Contact Griven USA to confirm availability of a custom CCT.



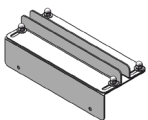
CUSTOM MONOCHROME

Fixtures with dedicated color LEDs available. Contact Griven USA to confirm availability of a custom color.

NOTES

1. Wire specifications are available from factory as well as approved wire for purchase.
2. Other control protocol solutions available. Contact factory for more information.
3. Wireless components are external to fixture. Distance limitations based on antennas chosen and site conditions. Contact factory for more information.
4. Based on maximum of 32 fixtures per run as well as any site constraints on conveyance of data.
5. For example: Lutron, Crestron, Encelium, Douglas, ETC by others. Griven control system will interface with building lighting control system.
6. Local wall controller for small applications. Wall controllers specified separately for larger systems.
7. Contact factory for assistance with specification. Onsite commissioning by Griven of control system is required.
8. Based on 1.5mm² cable cross section. Contact factory for assistance in developing alternate configurations.

ACCESSORIES



Anti-Glare Shield

