

DESCRIPTION

ONYX XQ sets the standard for ultra-narrow beam floodlights where precise and uniform illumination at long distances is required. The award-winning luminaire combines 96 high power LEDs in static white with precision optics to produce a very narrow 4° beam. The LED driver is thermally isolated in a separate compartment for enhanced longevity. On-board control panel allows for stand-alone or master-satellite operation, as well as interface to external DMX controllers. 0-10v Dimming is also available. Accessories for light control are available. All hardware is stainless steel.



Date: _____ Type: _____ Catalog Number: _____

Project Name: _____

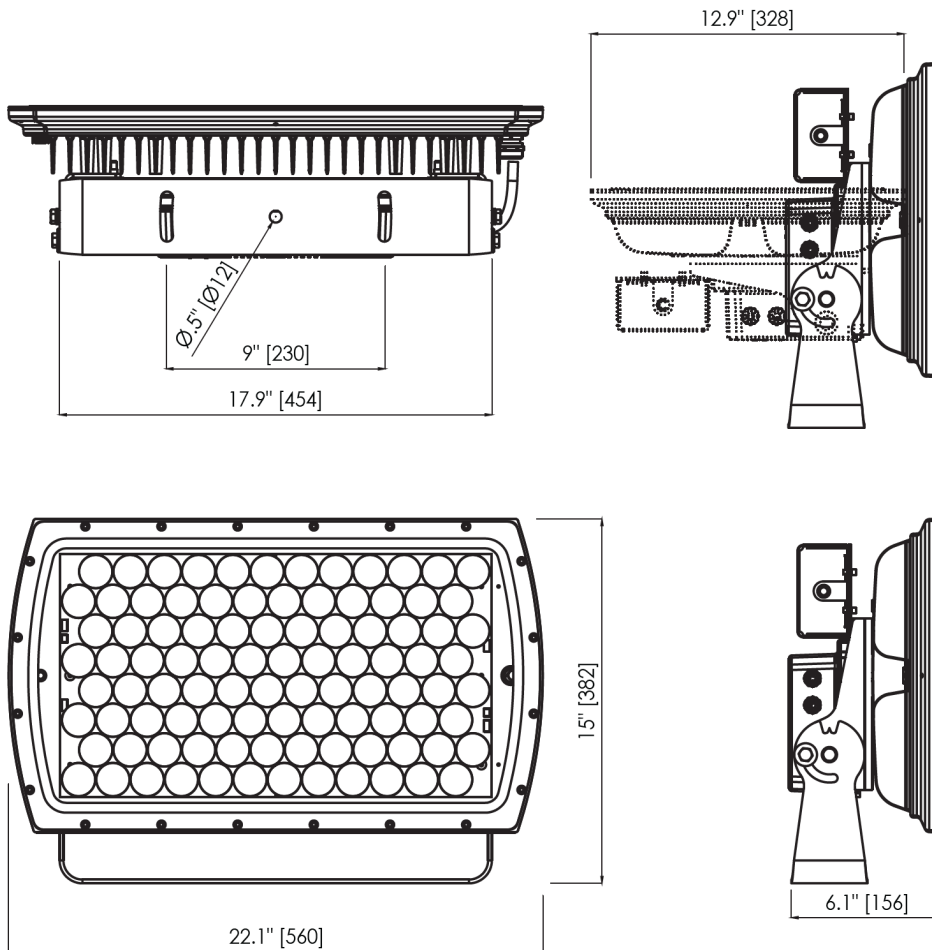
ORDERING INFORMATION

LUMINAIRE							
MODEL	COLOR	CONTROL	VOLTAGE	OPTIC	FINISH §	CABLE	OPTIONS
OXXQ ONYX XQ	30K 3000K	DMX-RDM DMX/RDM	UNV 120-277V	US Ultra Spot 4°	A Anthracite Gray	S Power in (59 in.) , DMX in, DMX out (66.9 in.)	3G 3G Mounting Yoke
	40K 4000K	DIM 0-10v Dimming (Select X cable option)			B Black	X Monocable for 0-10v Dimming	
	65K 6500K				G Griven Grey		
					W White		
					CC Custom Color		
					§ Contact factory for marine grade (anti-saline) finish		

		ONYX XQ		
PHYSICAL	HOUSING	Steel Mounting Yoke/Cast Aluminum Housing, scratch resistant paint		
	HOUSING SIZE	22.08"w x 15.05"h x 6.2"d		
	WEIGHT	39 lbs. (17.7 kg)		
	EPA	2.31 ft ²		
	OPERATING TEMPERATURE	-40°C to 50°C (-40°F to 122°F)		
PHOTOMETRIC	LED	Static White (3000K, 4000K, or 6500K White)		
	# LEDS	96 High Brightness Power LEDs		
	DELIVERED LUMEN OUTPUT	Up to 22048 lumens		
	EFFICACY	Up to 77 lumens per watt		
	L70 LUMEN MAINTENANCE	100,000 Hours @ 25°C		
	# DISTRIBUTIONS	1		
	LIGHT CONTROL ACCESSORIES	Snoot, 3G Mounting Yoke (Contact Factory)		
LIGHT DISTRIBUTIONS* <small>*Values based on full output</small>	DISTRIBUTION	BEAM ANGLE	LUMENS	MAX CANDELA
	ULTRA SPOT	4°	19553 (3000K)	2,672,406 (3000K)
			20952 (4000K)	2,863,615 (4000K)
			22048 (6500K)	3,013,411 (6500K)
ELECTRICAL	POWER CONSUMPTION	286 watts max		
	AMPERAGE	2.4A @ 120V or 1.0A @ 277V		
	CONTROL	DMX/RDM. Includes onboard standalone sequencing or master-satellite operation without DMX control systems when programmed with infra-red configuration remote (Ordering code AL1321) 0-10v Dimming		
	MODES	- Intensity (1 channel)	- Stand-Alone Dimmer	
CERTIFICATIONS	SAFETY	CSA Listed for Wet Locations (Pending)		
	INGRESS PROTECTION	IP67		
	IMPACT RATING	IK09		
	EUROPEAN	RoHS		

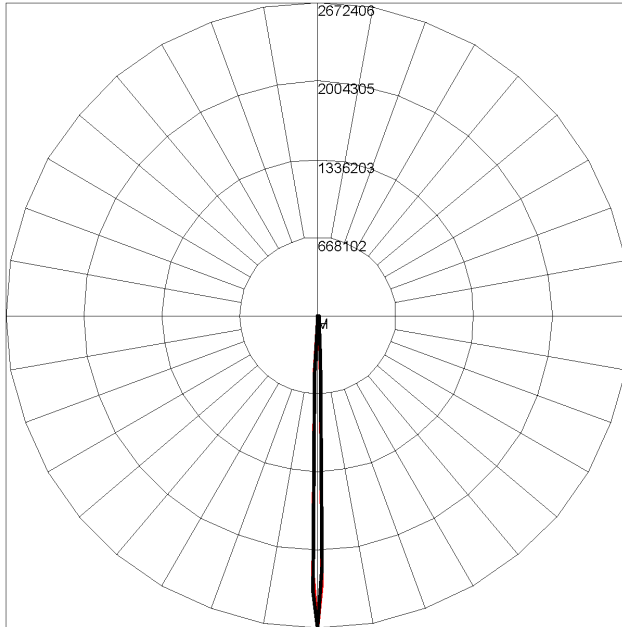
DIMENSIONS

All dimensions are shown in inches unless otherwise noted.



ULTRA SPOT 4°- 3000K

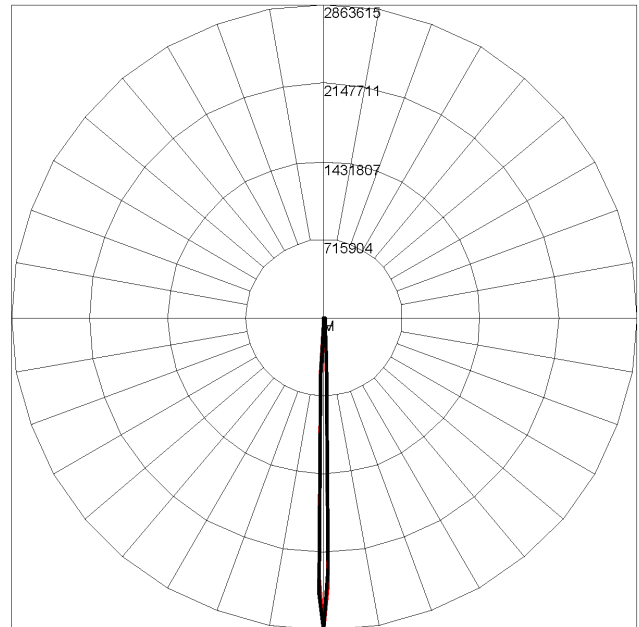
Maximum Candela = 2672406 / 19553 lms



Maximum Candela = 2672406.25 Located At Horizontal Angle = 0, Vertical Angle = 0
H - Horizontal Axial Candela
V - Vertical Axial Candela

ULTRA SPOT 4°- 4000K

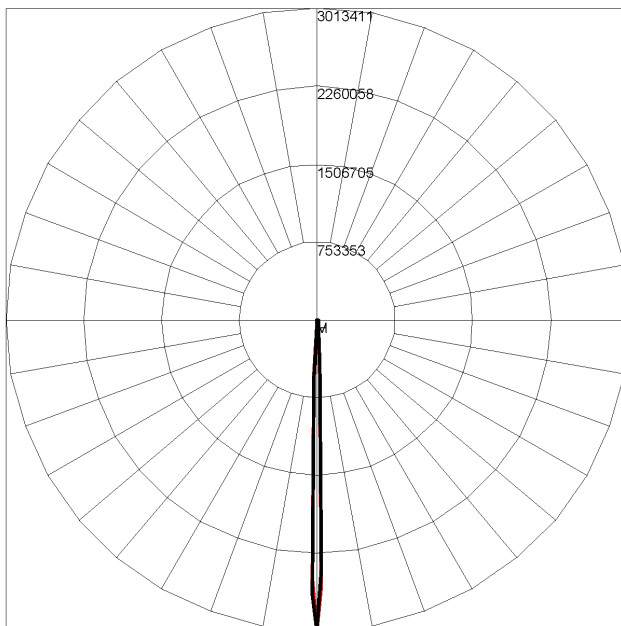
Maximum Candela = 2863615 / 20952 lms



Maximum Candela = 2863614.5 Located At Horizontal Angle = 0, Vertical Angle = 0
H - Horizontal Axial Candela
V - Vertical Axial Candela

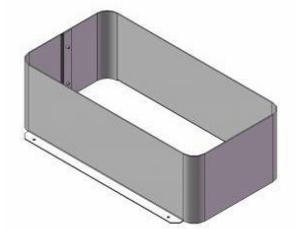
ULTRA SPOT 4°- 6500K

Maximum Candela = 3013411 / 22048 lms

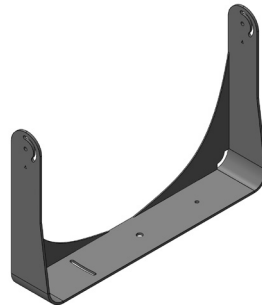


Maximum Candela = 3013410.5 Located At Horizontal Angle = 0, Vertical Angle = 0
H - Horizontal Axial Candela
V - Vertical Axial Candela

ACCESSORIES



AL4108- XX*
Snoot

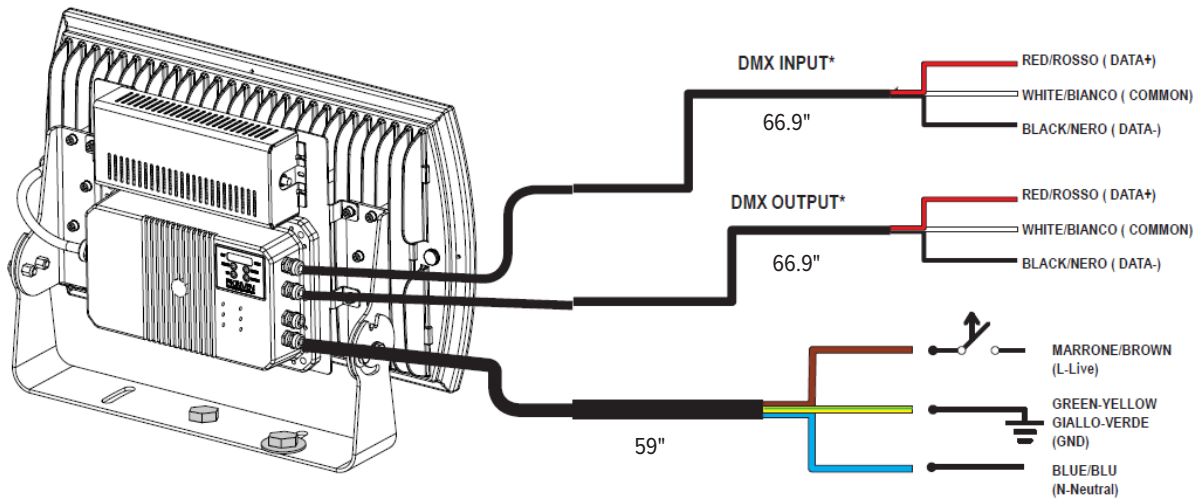


AL8257- XX*
Mounting Yoke

XX*- ACCESSORY FINISHES

AG	Anthracite Grey
BL	Black
SG	Griven Silver Grey
WH	White
CC	Custom Color

CONNECTIONS



*Contact Factory for 0-10v wiring connection diagram